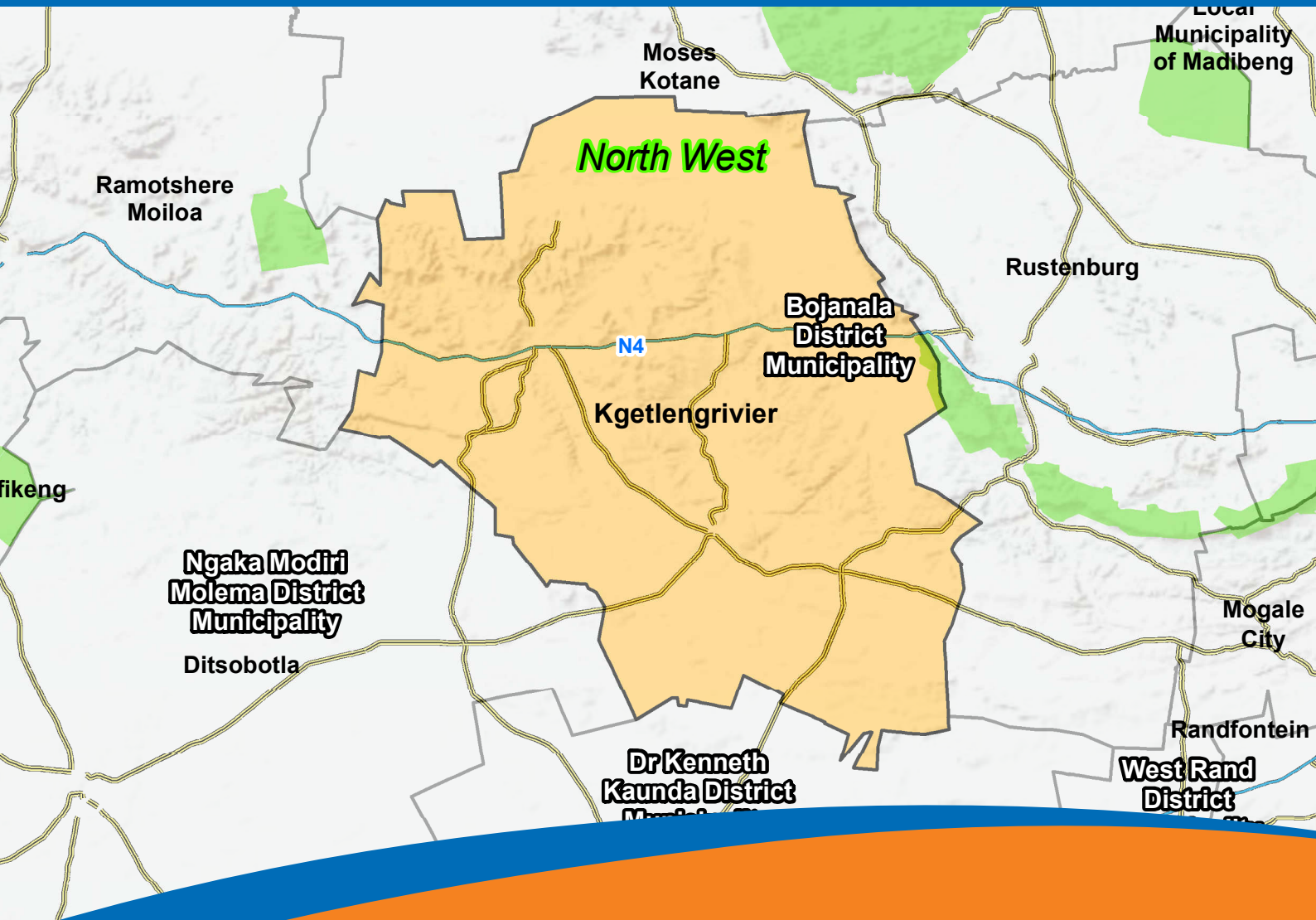


## Working for integration



## Kgetlengrivier – North West

Housing Market Overview  
Human Settlements Mining Town Intervention  
2008 – 2013

**The Housing Development Agency (HDA)**

Block A, Riviera Office Park,  
6 – 10 Riviera Road,  
Killarney, Johannesburg  
PO Box 3209, Houghton,  
South Africa 2041  
Tel: +27 11 544 1000  
Fax: +27 11 544 1006/7

**Acknowledgements**

The Centre for Affordable Housing Finance (CAHF) in Africa, [www.housingfinanceafrica.org](http://www.housingfinanceafrica.org)  
Coordinated by Karishma Busgeeth & Johan Minnie for the HDA

**Disclaimer**

Reasonable care has been taken in the preparation of this report. The information contained herein has been derived from sources believed to be accurate and reliable. The Housing Development Agency does not assume responsibility for any error, omission or opinion contained herein, including but not limited to any decisions made based on the content of this report.

# Contents

1. Frequently Used Acronyms .....	1
2. Introduction .....	2
3. Context .....	5
4. Context: Mining Sector Overview .....	6
5. Context: Housing .....	7
6. Context: Market Reports .....	8
7. Key Findings: Housing Market Overview .....	9
8. Housing Performance Profile .....	10
9. Market Size .....	15
10. Market Activity .....	20
11. Lending Activity .....	28
12. Leverage .....	32
13. Affordability Profile .....	35
14. Rental Index .....	39
15. Key Concepts .....	41
16. Source list .....	44

## 1. Frequently Used Acronyms

<b>CAHF</b>	– Centre for Affordable Housing Finance in Africa
<b>GDP</b>	– Gross Domestic Product
<b>GVA</b>	– Gross Value Added
<b>HDA</b>	– Housing Development Agency
<b>HPI</b>	– Housing Performance Index
<b>IDP</b>	– Integrated Development Plan
<b>LM</b>	– Local Municipality
<b>NU</b>	– Non-Urban, StatsSA subplace designation
<b>RDP</b>	– Reconstruction and Development Programme
<b>SDF</b>	– Spatial Development Framework
<b>SP</b>	– Subplace
<b>StatsSA</b>	– Statistics South Africa

## 2. Introduction

The Housing Development Agency (HDA) is a national public development agency that promotes sustainable communities by making well-located land and buildings available for the development of human settlements. As its primary activity, the HDA assembles and releases state, private and communal land and buildings for development. In addition, the HDA provides project delivery support services to organs of state at local, provincial and national levels.

In setting the agenda and asserting its role in the housing continuum, the HDA realised that there is a gap in the provision of accurate and easy-to-understand information regarding the property market, particularly in previously overlooked areas including the mining towns.

The development of this report is a result of this gap. It aims to explore and present an overview of the formal housing markets in Matjhabeng, Moqhaka, Merafong, Randfontein, Westonaria, Thabazimbi, Greater Tubatse, Elias Motsoaledi, Lephalale, Fetakgomo, eMalahleni, City of Matlosana, Mogale City, Ephraim Mogale, Steve Tshwete, Thaba Chweu, Tsantsabane, Ga-Sekgonyana, Gamagara, Kgetlengrivier, Madibeng, Moses Kotane and Rustenburg so as to change perceptions of affordable markets and as such, expand and deliver affordable housing options within South Africa's municipalities.

The study was undertaken over a three-month period, relying mainly on the high level indicators developed by the Centre for Affordable Housing Finance in Africa which considered the market conditions, existing market size and activity, average prices and values, market growth and lending activity in the area to support a better understanding of the opportunity and the impact of various housing policy interventions. The centre also highlighted the range of opportunities across areas to stimulate the affordable housing market in South African municipalities.

The methodology also included site visits to eMalahleni, Randfontein, Westonaria and Rustenburg so as to confirm findings and to gain more insights about the current housing circumstances.

The report is intended for use by all stakeholders involved in planning including professionals in municipalities, Government officials, private sector, investors, developers and urban planners, for the mission of enticing a range of development options. The report does not address housing supply for the lowest income levels but rather seeks to make the case for expanding the gap market in order to entice private sector engagement more effectively.

### 2.1 Report Contents

The report covers the following aspects of housing markets through maps, charts and graphs to highlight understanding across the municipality and at the neighbourhood level, where housing markets function.

1. **Housing Performance Profile** – the pace of growth by suburb, on maps and in charts, as measured by the Housing Performance Index
2. **Market Size** – total number and distribution of residential properties, households, values and sales prices, key demographic indicators
3. **Market Activity** – properties, sales and new properties and resales over time
4. **Lending Activity** – sales and loans by lender
5. **Affordability Profile** – affordability based on local incomes, compared to sales price, housing gaps and affordability ratios
6. **Leverage** – the value of equity available for purchasing new homes
7. **Rental Index** – those areas most prime for quality, dense, professionally managed rental housing

### 2.2 Definitions and Methodology

For housing supply, title and deeds records were merged at the suburb level, mapped and ranked through the Citymark dashboard. Priority has been placed on actual transaction datasets from familiar sources that can be geocoded to the subplace level, trended over time and updated regularly. For housing demand, StatsSA data was applied as the most consistently collected, widely understood and most common source of demographic data in the Country.

## 2.3 Benchmarks

Benchmarks are indicators used to compare performance across areas and are valuable for understanding meaning. Each indicator was created at the local, municipal and national levels in order to measure performance within and across markets. These benchmarks also highlight areas or trends which are outperforming the overall market in certain ways and might be most receptive to a variety of new housing development options.

## 2.4 Site Visits

As mentioned, the team conducted four site visits to eMalahleni, Randfontein, Westonaria and Rustenburg. These visits provided the chance to confirm findings from the data and chat informally with residents about their current housing circumstances: where they had moved from, where they were currently living and how affordable it was and where they were headed, including their ambitions and concerns. This helps to provide a sense of the housing continuum in the town – what choices residents feel empowered by and what constraints keep them from realising their dreams and aspirations. Residents who were engaged came from informal settlements, brand new RDP homes and a stalled RDP project which had recently been reactivated by the city.

Some of the key insights from these site visits were:

- Residents may not know exactly what their home might be worth but they are very aware that their home has a value, which includes stability and security for themselves and a better future for their families
- Many residents use their homes to supplement their own income, including renting shacks and rooms and operating home-based businesses
- There might be a relationship between how the houses are handed over and the sense of ownership (as evidenced by improvements to the homes)
- Everyone we spoke to understood the importance of a title deed, that the title deed proved (secured) ownership, even if in a few cases, they were not sure of its status or how to get one
- Most people mentioned a better future for their children as an integral part of the importance of homeownership
- Residents were aware that there is an acute shortage of housing opportunities and that despite having their homes, they were surrounded by others without adequate housing

Many people understood housing markets around them intuitively – where the better houses were closer to jobs and transportation and what the barriers were – the price, the inconvenience and the cash required to access the houses.

## 2.5 Using this Report

This report is intended to provide a high-level view of the mining town housing markets overall and by neighbourhood, within areas of particular interest by measuring and comparing housing market performance amongst each other and with the municipality. This report highlights connections and implications from the findings that are of significant interest to the HDA. The report does not seek to understand why things are but offers general ideas based on experience with housing markets and new learning about mining town housing markets from these reports.

The report findings emphasise opportunity as opposed to risk or failure. Opportunities are defined as conditions or indicators within areas which can show:

- The ways in which areas or markets are behaving *positively* (such as growing more quickly) or showing strength (such as stability and consistency)
- The ways in which areas can be connected to common strategies that promote *growth, investment or sustainability* (such as proximity to transit or density)
- A more accurate picture of the *real value of areas* in ways that can leverage economic investment (such as equity, lending levels and new registrations)
- Better ways in which *risk* can be measured and accounted for (such as timing, scale, or location risk)
- A more *comprehensive scope or scale of markets*, to better estimate and project market intervention (such as property or population size, absorption rates, or patterns of behaviour)
- Ways to *challenge and overcome those perceptions* or assumptions that might stymie investment, or slow growth

This report is not intended to provide a complete final picture of market conditions or demographic circumstances. It does not reflect conditions in the informal market, nor general attitudes. It is not intended to be the last word on market potential but rather the *first*: how can current conditions present opportunities for better housing options and improved market performance? Where are places that might be performing better in some ways, which might provide areas of opportunity, and how? The highest and best use of this report is to suggest new ways to support the growth of affordable housing in South African mining towns, by exploring and reconsidering areas for new investment, expanding existing investment and promoting policies and programmes which can support and entice that development. It can also imply the impact of ongoing investment and programmes activities.

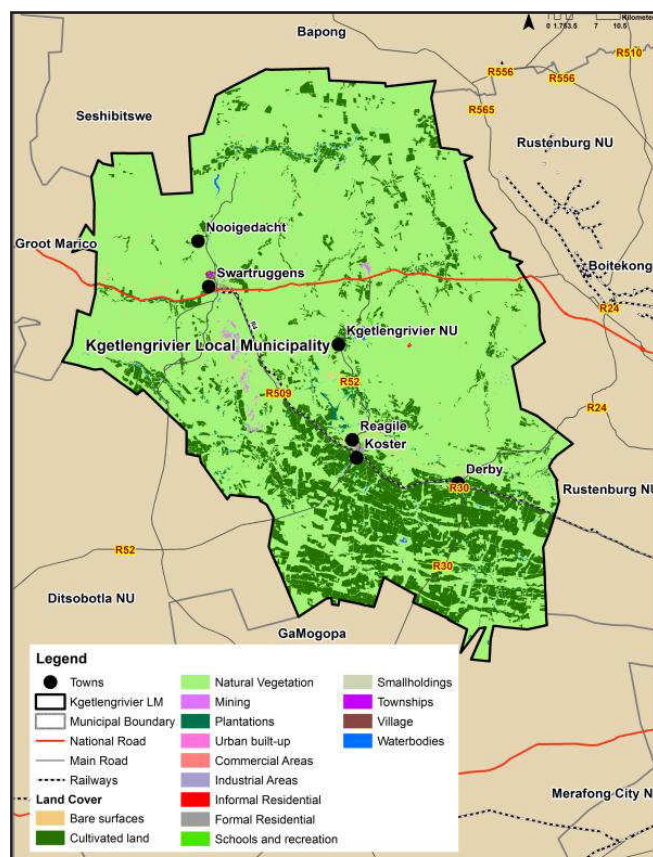
## 2.6 About Formal Housing Markets

This report relies on the South African deeds registry as the basis for analysing local housing markets. Thus, the report **only measures the formal housing market**, which can be defined as those residential properties which have been formally titled to a specific owner or group of owners. While this excludes a large part of the human housing condition in these towns, the advantage of focusing on the formal housing market is that it offers a better understanding of that part of the residential property market which is most opportune for leverage and investment interventions in ways previously not understood.

Taking into consideration the housing backlog from StatsSA, informal settlements and human mobility, housing markets are quite fluid and difficult to measure. Understanding housing markets more completely is one advantage of the titling initiatives recommended by many housing policy and planning advocates across the Country.



## 3. Context



### 3.1 Municipal and Regional Context

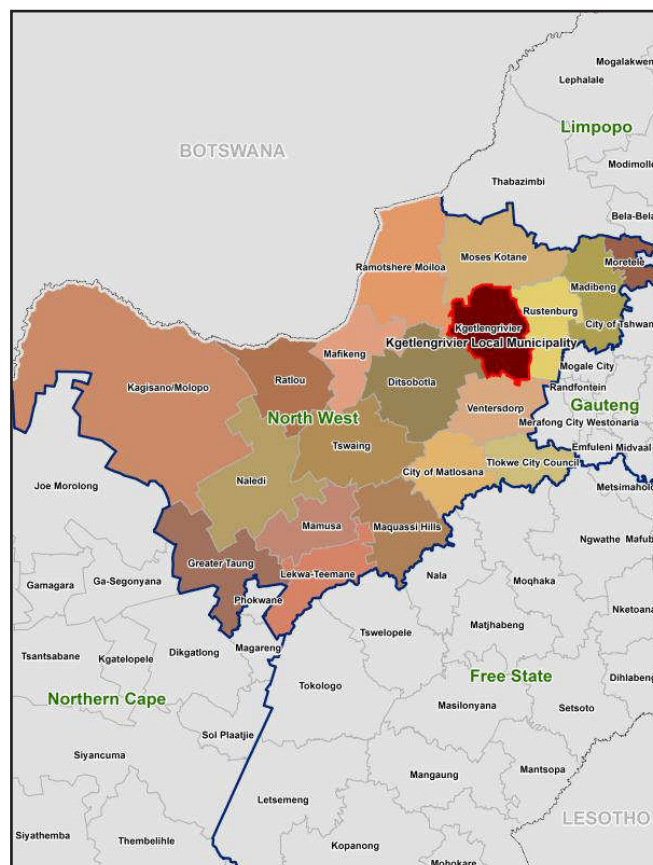
Key aspects of the city are shown from here for contextual purposes, which have been published on the city's website. These aspects are summarised from its 2014 IDP, to give important insights to the market overall:

- "Kgetlengrivier Local Municipality is characterised by National and Provincial roads, supported by a rail system which makes the area accessible to the major urban centers in North West Province, Gauteng and Botswana"
- "84% of the municipality's people reside in traditional or rural areas which are administered by the Traditional Authorities. These areas do not obtain title deeds because they are not formalised"
- "The municipal seat, Kuruman, is situated on the Namaquari route, forming part of the main route between Gauteng and Namibia and Cape Town via Upington"
- "14% of the population resides in urban areas"

### 3.2 Socio-Economic Profile:

The municipality's current demographic information is drawn from the HDA Municipal Profiles and from the 2001 – 2011 Census Data:

- "Kgetlengrivier has a population of 51 049"
- "There was a 3.4% population growth between 2001 – 2011"
- "In 2011, over 20.5% of the population was unemployed and the dependency ratio was 52%"
- "There are 14 673 households in Kgetlengrivier, with an average household size of 3.1 people"
- "72% live in formal dwellings"
- "52% of the households have flush toilets connected to a sewerage system, 35% have piped water inside the dwelling, 78% with weekly refuse removal and 90% have electricity for lighting"



## 4. Context: Mining Sector Overview

This brief industry profile is provided to help one understand how the mining sector might affect and engage housing in the mining towns. The mining policies are not specific to the towns – that information is not available. This information has been included because of the mineral mined, the regional location or specific city references (this report does not assess programme efficacy or impact).

The Kgetlengrivier Local Municipality is located in the south-eastern part of North West Province and forms part of Bojanala Platinum District Municipality. The municipality is situated on the N4 national road that runs between Pretoria and Botswana. The economy of Kgetlengrivier is characterised mainly by tourism, mining and agriculture, due to its location within the major tourism and mining belt of the North West province, Pilanesburg and Sun City.

### 4.1 Mining Industry Profile

- The majority of the mines are located between the districts within the North West Province and thus Kgetlengrivier Local Municipality is within the designated 50km radius of several other mines outside of its own town, which also service Kgetlengrivier Municipality
- The area has a rapidly increasing mining sector dominating the economy landscape
- The mining sector has been classified as 'driving' the economic sector, which indicates that the sector is the current strength of the local municipality
- The expansion of mining activities and influx of workers have increased the housing backlog in and around Koster Proper

### 4.2 Housing in the Mining Sector

The remote locations of many mining operations means that mining companies have long histories of providing housing solutions for their employees, from executive management to miners. Different approaches to housing policies vary and are not discussed in specific terms. The knowledge of the general mine housing policies assists one in understanding the effects on the housing markets in the towns. Unlike large metropolitan areas where housing markets grew more organically (with some historical master planning involved), these towns were largely designed intentionally to serve the interests of the mining franchises above them. Understanding the housing options offered by the mining companies is an important factor in understanding local housing markets. The following is only indicative of each company's general approach; the housing models in each town are approached differently and more specific to their context.

Kgetlengrivier mining activities are those related to diamonds, slate and aggregate sand. These resources are produced by various mining companies, such as the: Implats and Helam Mining Company. Their mine housing policies outline the following:

- Implats' focus on improving employees' housing and living conditions is informed by its accommodation strategy, conceived in 2007, which highlights the need to convert all hostels into single-person dwellings and promote home ownership and community development
- Implats is committed to introducing and promoting home ownership schemes among the workforce. The schemes facilitate access to appropriate finance to purchase stands, housing stock or to build their own houses and become homeowners within the formal sector – largely through the company subsidisation of the purchase price/costs
- Implats seeks to create communities where employees can reside with their families in a stable, healthy and secure environment within commuting distance of their places of work
- Implats Platinum Village development was initiated last year as part of the mining company's accommodation strategy. The R1-billion development will be executed in phases, with a final target of 2 420 units. Phase 1 is currently underway and should deliver 557 houses, with 300 due for completion by the end of the year
- Helam Mining is a division of Petra Diamonds situated at Swartruggens. Petra's objective for FY 2015 is to formalise the Group's accommodation and Housing Strategy
- Petra has an internal Task Force which commissioned a housing survey across all the operations between 1 November 2013 and 30 March 2014. The parties further engaged on different proposals in facilitating home ownership and the process will be finalised in FY 2015. The process is aimed at fulfilling the requirements of the Mining Charter



## 5. Context: Housing

The municipality has identified the following challenges and opportunities from its 2014/2015 IDP:

### 5.1 Housing Challenges:

- Housing allocation policy for municipal rental accommodation and subsidised housing
- Registration of all residents and properties including applicants for housing assistance into a computerised housing database
- Maximisation of sources of housing finance to ameliorate the housing conditions of low-income areas. Management and control of the spread of informal settlements, land invasion and evictions from land. Promotion of integrated housing development
- Prevention of illegal letting and sale of subsidised houses

### 5.2 Housing Strategies:

- All informal settlements formalised and tenure secured
- Development of Township establishment for affordable housing – 600 affordable sites in 3 years
- Development of RDP sites for low-cost housing – 2500
- Purchasing of land for low-cost housing – 1500 hectares in 3 years

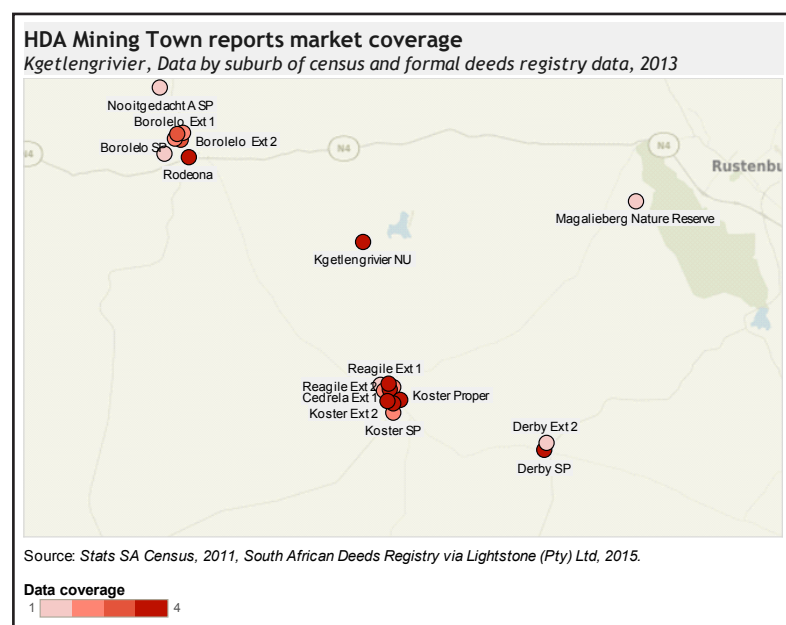
## 6. Context: Market Reports

### 6.1 Report Coverage

It is important to keep in mind that these reports only cover the formal housing market, as captured by the Deeds Registry. Thus, there are four layers of information in the report:

1. Total StatsSA suburbs
2. Suburbs with residential properties
3. Suburbs with residential properties sold
4. Suburbs with residential properties sold with a bond

This map shows all the census suburbs in the town (pink) to all the suburbs with residential properties with bonded sales (dark red). The chart shows what percentage of the town has a formal residential housing market. This may help explain some of the maps and why some suburbs are included and some may be omitted. As an example, information on bonded sales will only reference suburbs in which bonded sales took place.



#### Kgetlengrivier Housing Market Report Coverage

Total Census Subplaces (SP's)	22	
Total SP's with registered residential properties	17	77%
Total SP's with sales	9	41%
Total SP's with bonded sales	11	50%

#### Market Area by the Numbers

Suburbs	22
Suburbs with residential properties	17
Households	14 671
Residential properties	3 939
Housing Backlog	N/A
Backlog as percent of all properties	251%
Households to properties ratio	3.72
Total residential value	R 1.2 billion
Average monthly income	R 5 100
Average property value	R 302 796
Average sales price	R 357 000

Source: Centre for Affordable Housing Finance in Africa, Lightstone, StatsSA

## 7. Key Findings: Housing Market Overview



The Kgetlengrivier **housing market has experienced the fifth highest levels of growth of all mining towns, last year. The mining towns provide stable incomes, new housing investment and in particular a thriving housing market.** This is likely due to continued growth and expansion of the mining sector and jobs along the Platinum Corridor and the increasing urbanisation of previously undeveloped or rural areas within the municipality. Recent growth has surged a bit, creating an opportunity for markets to be carefully assessed in order to best position the next wave of growth. Housing options are not currently diversely distributed across the municipality.



Kgetlengrivier's **affordable housing gap is slightly below the national average.** Despite an above-average monthly income, there remain large disparities among incomes and affordable housing access within the municipality. This may prioritise housing strategies and solutions which propose creative financing tools and techniques to reduce financial barriers (such as down-payments, interest rates and lower principal repayments) as well as unlocking equity, rather than simply trying to push costs down.



**46% of residential properties in Kgetlengrivier are Government-sponsored, the second highest level of all mining towns in the study. This represents an important opportunity to leverage that investment** in affordable housing in the years ahead, as owners seek to sell and move up the housing continuum, if opportunities are positioned properly. Average equity in these areas doubles purchasing power, putting moderately priced housing within reach of lower-income families. This situation can be used to drive developers to build more gap housing and financiers to finance low-priced acquisition loans.



The area has a below-average diversity and integration of housing values and property types, despite growth in some areas, which suggests **a market that could benefit from a wider range of housing options.** Formal mixed-income housing development provides adequate returns for developers while providing lower-income homes – and creates a market less reliant on Government and mining intervention.



**Kgetlengrivier has experienced incrementally consistent lending from non-traditional lenders,** which accounts for some of the new lending in the municipality, especially in 2011 when the lending amount doubled. With the presence of 46% RDP units, it will be an important strategy to encourage traditional and new lenders to develop creative loan programmes targeting those homeowners in order to make it easier for them to sell their homes, unlock the value of those homes and allow owners to move up the housing continuum.



The **opportunity for rental housing development within Kgetlengrivier is not particularly strong within any specific areas.** Data indicates that 18% of households are renting. Those areas with greater density, modest incomes and affordability challenges are more likely to support quality, professionally managed, affordable rental housing. Rental housing also provides flexibility to employers and workers as mining markets expand and contract from time to time.

## 8. Housing Performance Profile



### 8.1 Key Findings: Housing Performance Index

The Kgetlengrivier **housing market has experienced the fifth highest levels of growth of all mining towns, last year** which is likely due to continued growth and expansion of the mining sector and jobs along the Platinum Corridor and the increasing urbanisation of previously undeveloped or rural areas within the municipality. Mining activity, which is not included in this report, may be a factor as well.

Recent growth has surged a bit, creating an opportunity for markets to be carefully assessed in order to best position the next wave of growth. Housing options are not currently diversely distributed across the municipality.

### 8.2 Policy Implications

With a market growing as quickly as Kgetlengrivier, **meeting housing demand** will be a crucial factor in stabilising the town through this period of growth. In slow-growth neighbourhoods, where most of the lower priced housing currently exists, housing will need to be built more affordably but will need to be situated well to better integrate housing markets. Site development initiatives should include rental housing to meet the increased demand.

### 8.3 Quick Definitions:

**Housing Performance Index (HPI):** provides an understanding of local housing market performance by tracking six key indicators which most effectively convey fundamental components of real estate markets and are then compared to the results for the entire municipal property market to determine areas of growth or strength relative to the entire metro.

**Housing Performance Profile:** this describes the housing market performance of local areas as growing (those areas where the index is 6.5 or higher), stable (the index is 4 or higher) or slow (the index is less than 4) compared to the metro in which it is located.

**Formal Housing Market:** residential properties that are registered on the South African deeds registry. This does not include informal settlements or other houses otherwise not on the deeds registry.

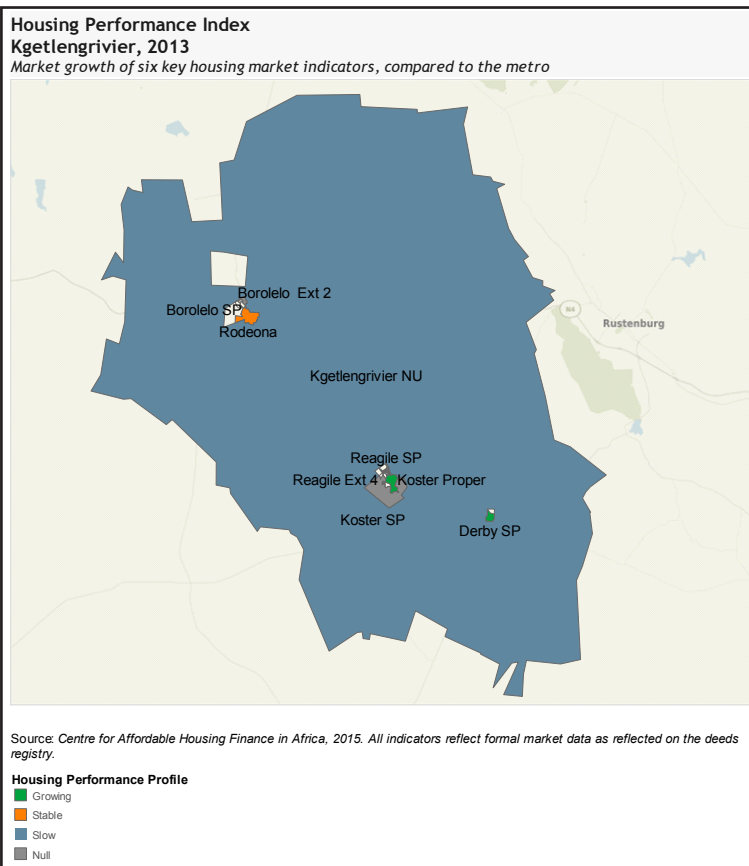
**Indicators:** suburb-level measures used to convey a more complete understanding of housing markets, sometimes a point of data (such as number of properties), or a calculated factor (such as the housing index or the affordability ratio).

**Housing Continuum:** a range of housing options which are available to a wide range of income levels, budgets, housing types and ownership opportunities.

**Bonded Sales:** the total residential properties that were transacted with a bond collateralised or secured by that property.

**New Registrations:** residential properties that have never appeared on the deeds registry before. This is an important indicator of the growth of a market, whether the property has just been built or was built previously and never registered.

**Churn:** an indicator of the sales activity within an area similar to turnover, it is the number of residential sales transactions divided by the total number of properties.

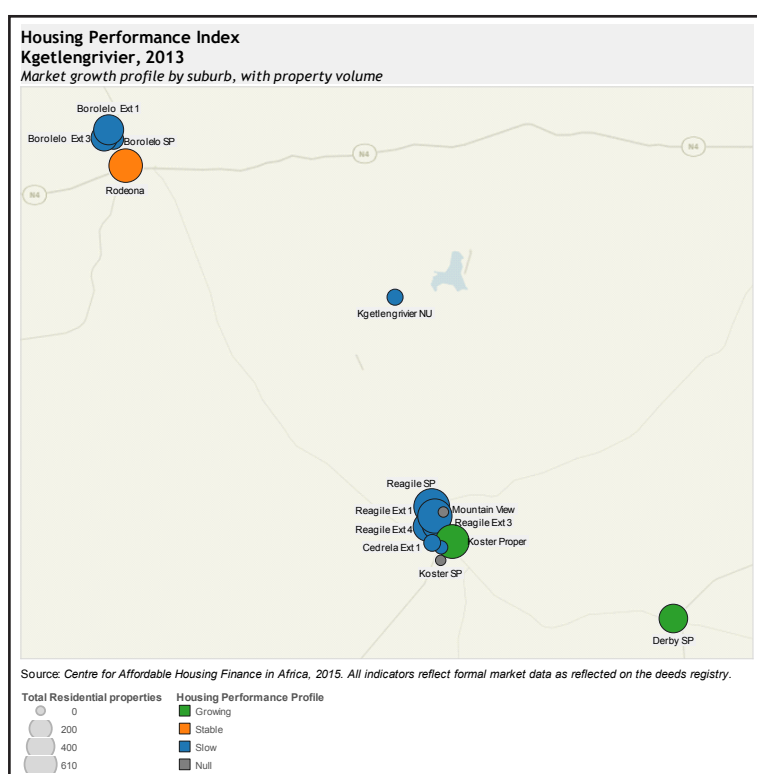


## 8.4 The Housing Performance Index (HPI)

This map identifies the Housing Performance Index by suburb (top) and total residential properties (bottom), to provide a sense of how local property markets are performing compared to the municipality as a whole. The housing performance index (HPI) provides a glimpse of the formal housing market only and does not include any demographic information. The weights were determined by how well the indicator reflects activity, increased investment and demand (and how reliably the indicator can be measured).

This information is useful in understanding how the formal market is behaving (which is influenced by the presence of mines, informal settlements and the people who move in and around the towns). This picture is intended to help one understand how key housing sector partners (developers, investors) seek and measure opportunity, in order to better inform and coordinate Government planning processes and private sector motivation.

**“Growing”** suburbs are areas which exceed the municipality's rate of change in any four of six key market indicators. **“Stable”** areas meet or beat the municipality in at least three indicators and **“Slow”** areas are growing at rates less than the municipality in two (or fewer) of the six indicators. While an index provides quick understanding, it is important to look more closely at the indicators themselves to understand more clearly the underlying factors affecting market growth and stability.



### CAHF Housing Performance Index

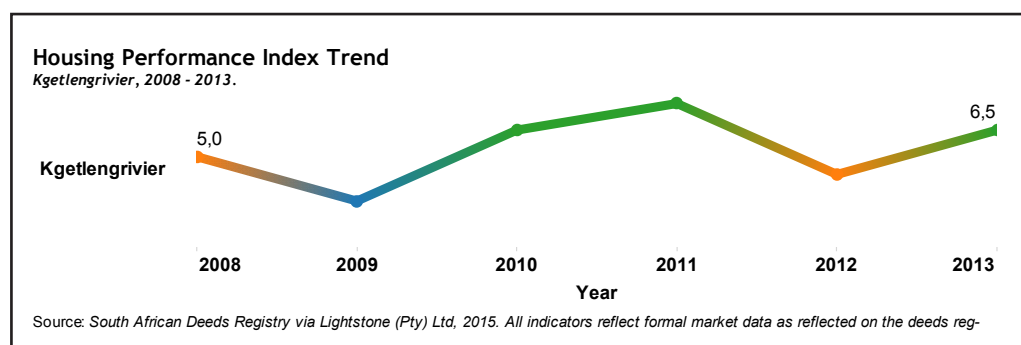
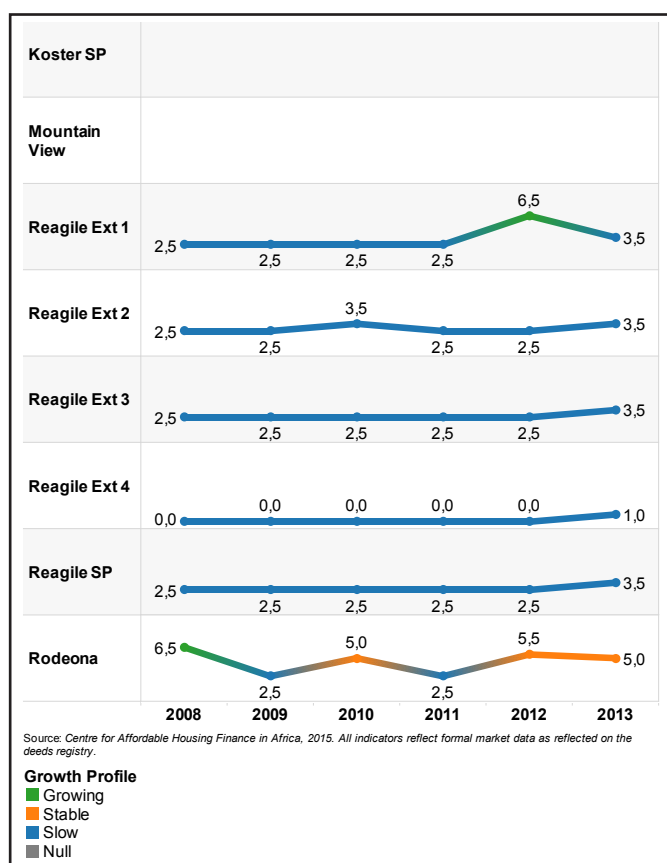
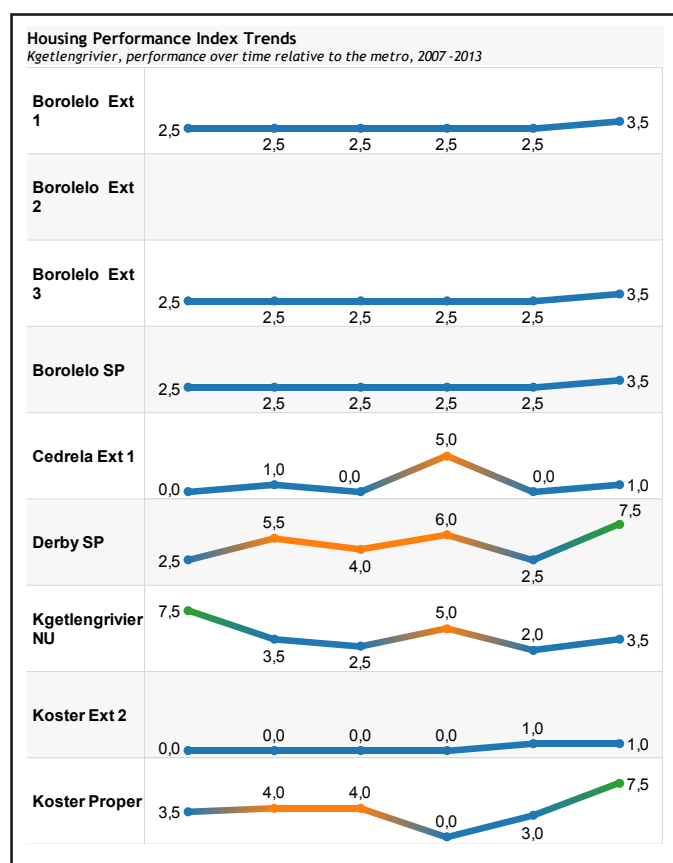
Indicator	Measured	Implies	Weight
Price	Average sales price	Appreciation	25%
Value	Average property value	Appreciation	25%
Transactions	Number of sales	Demand	15%
Percent bonded	Bonds per sales	Investment	15%
Churn	Repeat sales as a percent of total properties	Activity	10%
New Properties	New properties added to the registry	Growth	10%

## 8.5 Performance Over Time

These charts provide the housing performance index by suburb, over time, using the six key indicators (price and value appreciation, sales and bonded sales, churn and new properties). Growth is relative to the municipality (and change from the preceding year), so it is important to compare these lines to the area's overall performance and the direction in which the trends are headed. The city's growth overall (below) is in the top 6 growth markets for mining towns and appears to be on a stable upward trend, as compared to the province.

**While most areas are experiencing extremely slow or no growth, only two areas appeared to have grown significantly in 2013 compared to the prior year (Darby SP and Koster Proper).** In considering development investment over the long term, stability of growth is often a more important consideration, when projecting future performance, than high growth. Building housing opportunities between areas of high and low growth can better integrate housing markets overall. This information can help inform one how to create a more cohesive and stable housing continuum, with fewer spikes and drops – and where to begin.

*Areas with no data have no residential properties or sales transactions, such as farms or open space, mines or industrial uses like power generation.*





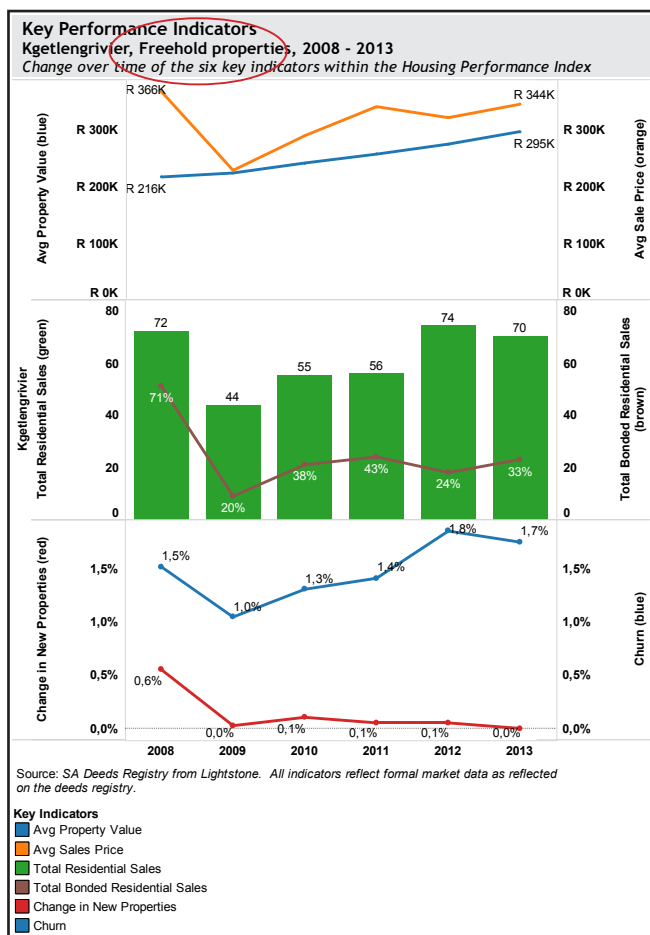
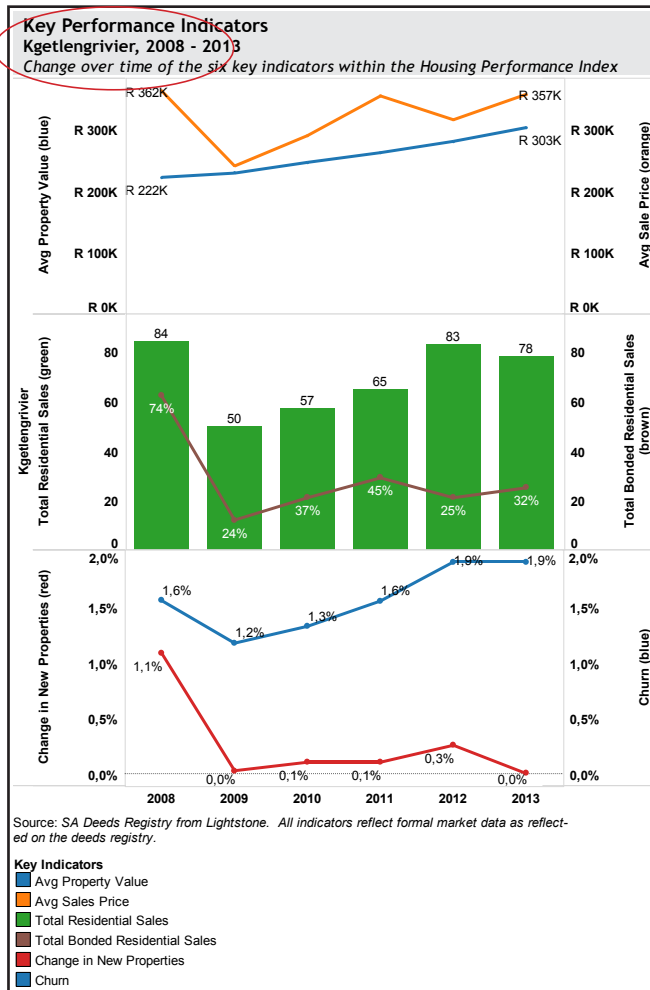
## 8.6 Housing Performance Indicators

Six indicators – price and value appreciation (top orange and blue lines), total sales and bonded sales (middle green bars and brown line), change in new properties and churn (bottom red and blue lines) – are the most telling of growing, active housing property markets. The relationship between indicators provides clues as to what may be driving performance, what that might mean for future development potential and how it might affect or be influenced by different housing types, prices or target incomes.

These charts compare the performance of three ownership types, namely freehold, sectional title and estate ownership. The housing market in Kgetlengrivier is dominated by freehold properties. **Overall, properties have been selling above their values, suggesting an active lender and buyer interest in area.** This may also be the result of a lot of lower valued housing, bringing the average value down.

**Overall the number of sales (green bar) has fluctuated slightly and bonded sales (brown line) experienced a decrease in 2009 of 50% from 2008, and then fluctuated for the rest of the years, including a spike in 2012.**

Housing markets are very sensitive to access to credit, so lending information will be helpful in understanding this more closely (see Lending below). Churn rates have steadily increased (blue line), indicating higher turnover of existing homes over time as well.



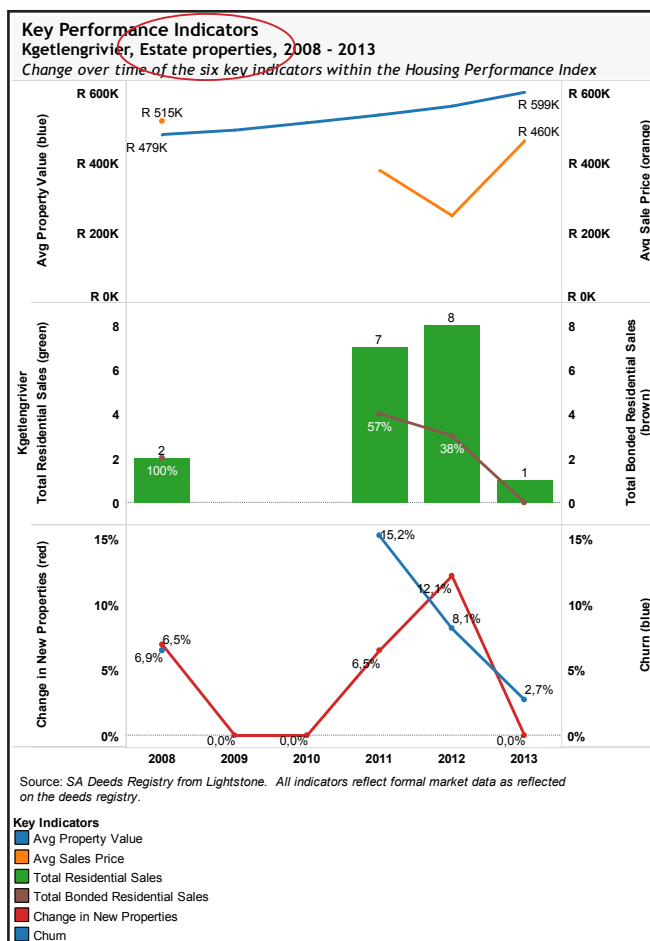
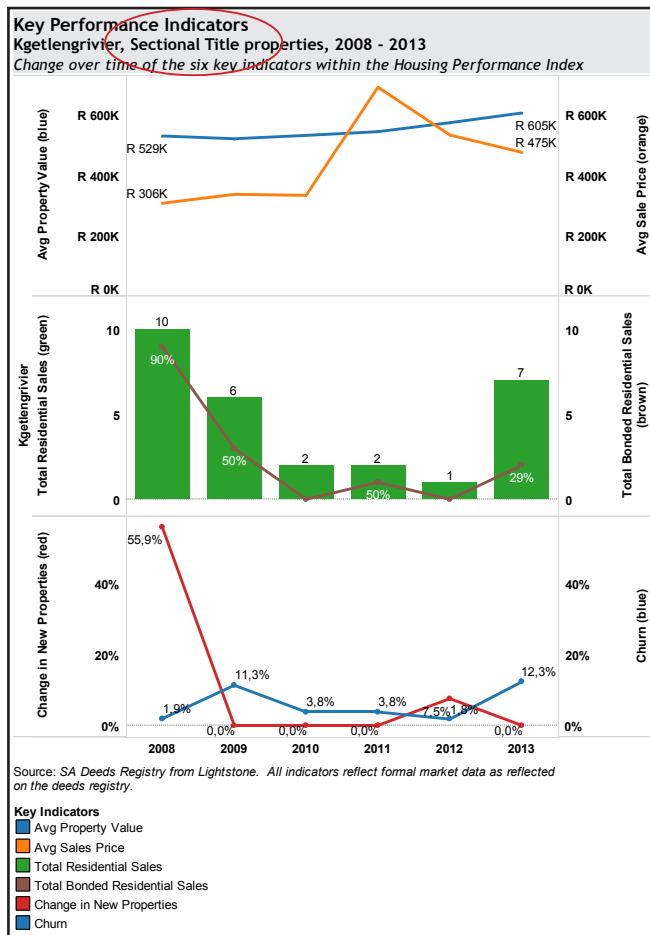
## 8.7 Housing Performance Indicators by Property Type

Different housing markets perform in different ways, including freehold (free-standing) homes and sectional title (sub-units within a single property). The area is predominantly freehold (see Market Size below), with a small active sectional title and estate property market. Overall, sectional title sales prices have been lower than the property values, except in 2011. Market activity decreased significantly in 2009 in terms of sales, lending and rates of new properties added to the registry (red line). Maps below indicated sectional title properties only in two areas namely, Rodeona and Koster Proper.

The estate property market reflects a gap in activity from 2009 to 2011 as well as a drop in bonded residential sales, from 100% in 2008 to 0% in 2013 (brown line). Maps below indicate that these were all in Koster Proper.

Lending is instrumental in the growth of housing markets and the ability to access bonds to buy sectional title houses has driven the growth of this housing type. Sectional title is also an important affordable homeownership option.

However estate properties are experiencing the greatest drop in market activity, and average sales prices are trending significantly below property values.



## 9. Market Size



### 9.1 Market Size: Key Findings

Kgetlengrivier's housing market is essentially three markets: Government-sponsored housing built as part of the national housing initiative over the past 20 years, privately traded and financed homes and informal settlements. Markets are highly segregated between lower-priced, actively selling private growing markets near the city centre, further flung middle-income non-bonded Government-sponsored developments and informal settlements (not on the deeds registry).

The implied demand for housing within Kgetlengrivier is high. Demand creates opportunities for new housing supply to be positioned between the existing segregated markets to better integrate the town's spatial, income and housing markets.

### 9.2 Policy Implications

Governments can use this existing investment to identify areas of future development and entice private sector participation. Existing **Government investment in housing can be leveraged** to guide new development opportunities, if and when those homes can be sold to new buyers and the proceeds then used to purchase new housing further up the housing continuum. As an example, **governments might prioritise new development between government-dominated and private markets** for more integration into mixed-income sites and fill spatial gaps within the town.

**The encouragement of the expansion of financing** to lower-income families will allow for those homes to be sold and the proceeds then used to support housing development further up the housing continuum.

Rapidly changing housing demand, driven by mining activities, makes a strong case for prioritising quality rental housing. If rental housing is well-situated and convenient to transport and centrally located in dense areas, it can bring social and economic cohesion to housing markets over the longer term.

### 9.3 Quick Definitions:

**Market Size:** the total number and distribution of important aspects of areas, including average home prices, home values and total households in order to inform the potential scale of housing intervention strategies and the impact of proposed development schemes.

**Property Value Segment:** in order to better understand the performance of housing markets, data has been grouped into four property value bands: properties valued under R250 000; between R250 000 and R500 000; between R500 000 and R1.2 million and over R1.2 million. This helps one to understand the various trends and strengths inherent in each segment and to see how properties are integrating across the housing continuum, especially over time.

**Government-sponsored Housing:** housing which was created through some Government intervention, from site and infrastructure provision, direct construction or finance such as Site & Service, RDP and BNG. While these homes are not recorded as such on the deeds registry, their presence is estimated based on surrounding registrations, timing, prices, and volume of activity.

**Freehold / Full Title:** a permanent and absolute tenure of land or property by a person or entity (such as a corporation or trust) with freedom to dispose of it at will. Freehold or Full Title describes the assumption of full ownership rights when one owns a property, often including the building and the land it is built on.

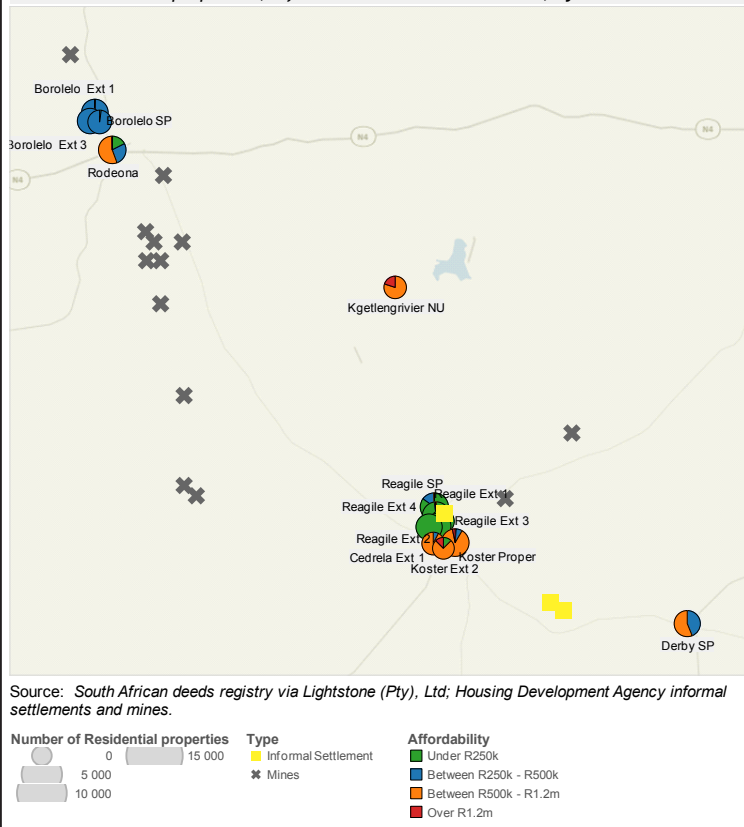
**Sectional Title:** separate ownership of units or sections within a complex or development. These are often comprised of mini subtype houses, semi-detached houses, townhouses, flats or apartments and duet houses. These are governed by the Sectional Titles Act and managed by a body corporate comprised of elected representatives from the sectional title owners in the development.

**Absorption:** the pace with which homes to be developed might be sold in a specific market during a given period of time. This can be calculated by dividing the total number of available homes coming on line by the estimated number of sales per month, often based on the rate of sales nearby.

**Households to Properties Ratio:** the total number of households (as reported by the census) divided by the total number of residential properties on the deeds registry. This is a quick, easy relative indicator of household density and formality of a suburb as compared to other areas.

### Distribution of Properties and Values by Suburb Kgetlengrivier, 2013

Formal residential properties, informal settlements and mines, by suburb



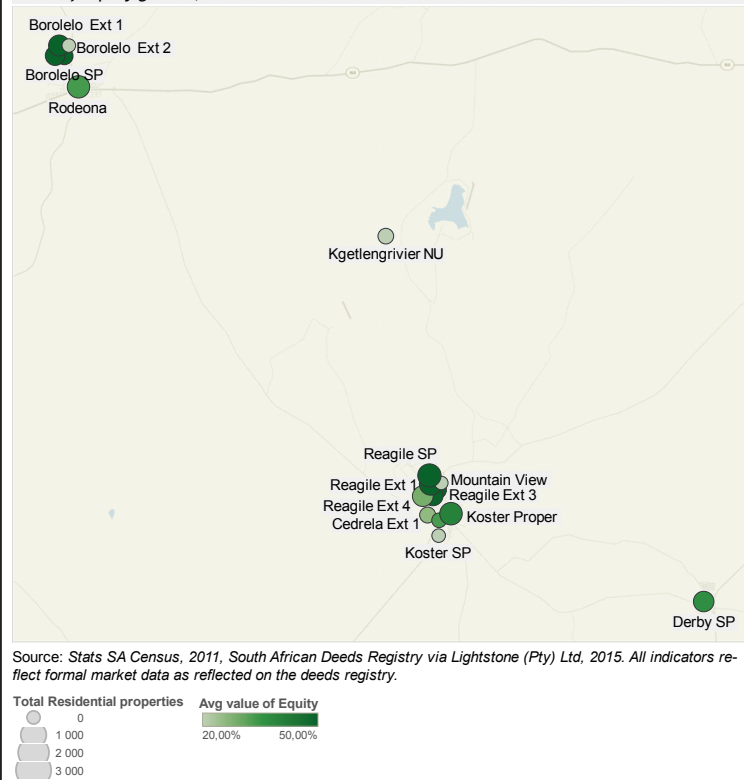
## 9.4 Market Size and Government Investment in Housing

Market size measures the distribution of home prices, households and values in order to inform the potential scale of housing intervention strategies and the impact of proposed developments on the surrounding area. It can also show the impact of Government investment in housing markets. Comparing the distribution of values to the housing performance map, several moderate income areas are growing faster than the municipality.

In Kgetlengrivier, properties with lower values are concentrated in the centre and northwest of town, along and between transit corridors – and coincide with Government investment in housing (map two). It is a very positive fact that so **many Government-sponsored housing units are on the deeds registry**. Often, these homes are undervalued, for two reasons. The subsidy value was often noted as the sales price (rather than the cost), or sales prices are driven low because buyers lack access to credit with which to purchase the homes at a more realistic sales price and must pay with the cash they have.

### 5 Year Equity Growth Kgetlengrivier, 2013

Rates of equity growth, since 2007 to 2013



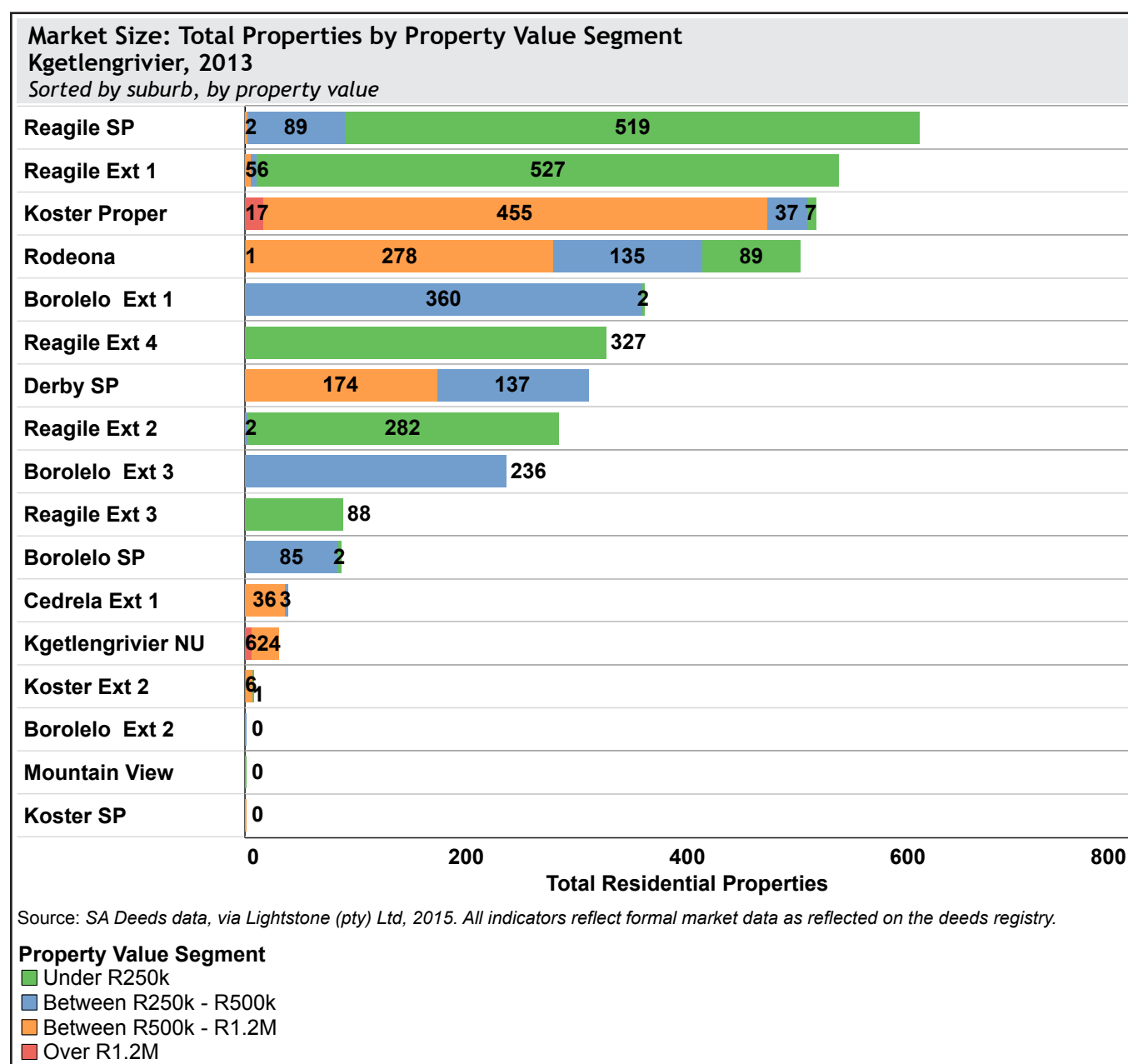
**The encouragement of the resale of Government-sponsored housing is an important means of expanding housing options** – for the sellers, who can move up the ladder with the equity from the sale of their property, to the first time homebuyer purchasing the existing home. More activity in these markets will also raise the value of the home, which is often a family's most valuable asset.

## 9.5 Market Size by Value Segment

These charts provide the total properties within each suburb by property value segment; below R250 000 (which includes most of the Government-sponsored housing); between R250 000 - R500 000; between R500 000 and R1.2 million and over R1.2 million). Kgetlengrivier has a mixed range of property values in several suburbs and other suburbs hosting only one range of housing values. This may help to explain the area's fairly stable market.

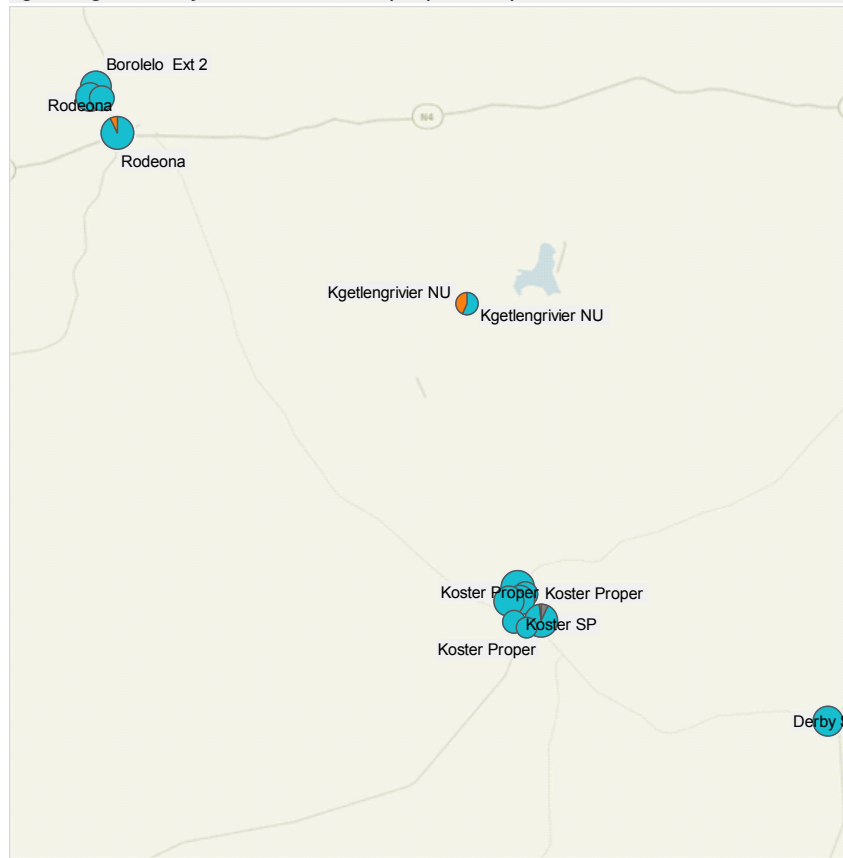
In small housing markets, Government interventions and programmes must be more specific as their impact will be greater on the market overall.

A diverse approach may help to expand the diversity and distribution of housing options across town.



## Distribution of Property types

Kgetlengrivier, by total residential properties per suburb, 2013



Source: South African Deeds Registry via Lightstone (Pty) Ltd. All indicators reflect formal market data as reflected on the deeds registry.



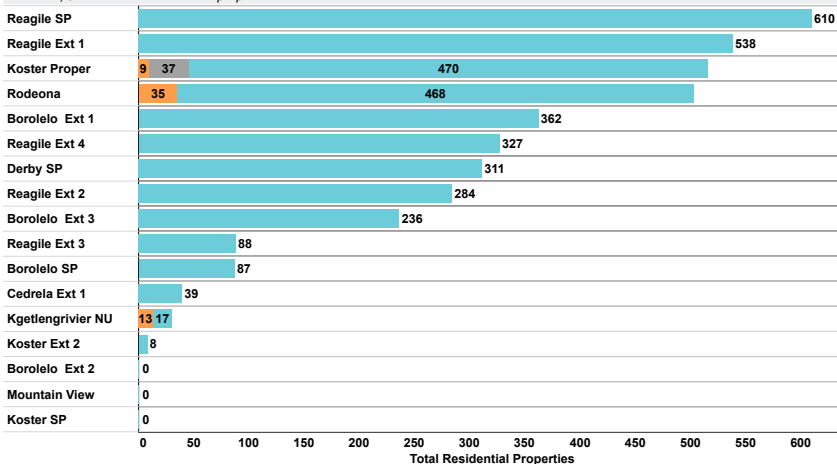
## 9.6 Market Size by Property Type

Kgetlengrivier residential properties are predominantly freehold. Estate and sectional title properties are relatively few and spaced out in two areas of town namely, Rodeona and Koster Proper. Sometimes sectional title ownership can present affordable housing options through shared costs of living space and convenient locations.

### Market Size: Total Properties by Property Type

Kgetlengrivier, 2013

Freehold, Sectional Title and Estate properties



Source: SA Deeds Registry via Lightstone (Pty) Ltd., 2015. All indicators reflect formal market data as reflected on the deeds registry.

**Property Type Description**

- Freehold
- Estate
- Sectional Title



## 9.7 Market Size by Households and Income

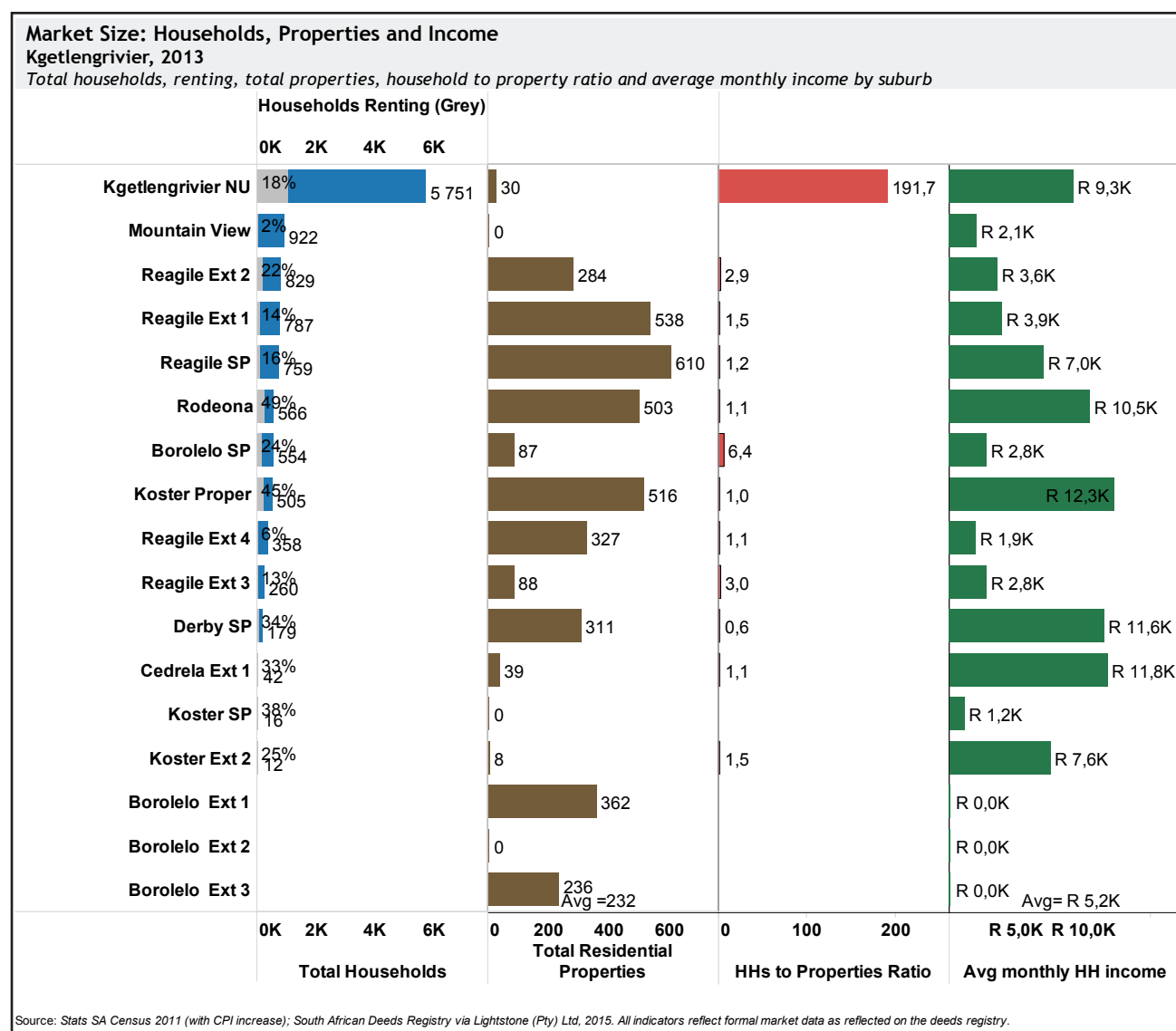
The understanding of the distribution of households and incomes within Kgetlengrivier helps to inform one of scale, development impact and programme targets. Census data is useful as the only source of demographic information consistently available at the suburb level and provides interesting insights into local differences.

Areas with high levels of renters (grey bars) **also very often have the highest household incomes** (such as Rodeona, Koster Proper and Cedrela Ext 1). We suggest these high levels of renters might be the combination of mining executives who rent (instead of own) their homes and support staff who rent nearby in backyard accommodation. While this generates important income to the owners, the creation of quality, affordable rental housing in those areas can help to address some of the housing backlog more quickly.

Areas with above-average renters and moderate incomes (green bar) (such as Rodeona, Reagile SP) might display families ready for more formal rental options.

**Ratios of households (from StatsSA) to properties (from the deeds registry) – the red bar – can show degrees of limited supply or informality.** The informal settlements in Kgetlengrivier NU have high populations, low formal properties, few registered properties and low incomes.

One suburb, with the second highest number of households (Mountain View with almost 922 households) does not have a single registered property in the area.



## 10. Market Activity



### 10.1 Key Findings

Sales of units are located in a few suburbs, in mostly middle income areas. Sales dropped across the Country after 2008 and have also dropped in Kgetlengrivier, mostly in middle-priced housing. Bonded sales in lower markets are an extremely small portion of the bonded market.

Sales continue to be dominated by repeat sales, with very little new housing sales. Property value (the home's worth) and sales prices are closely related in active markets. In less active markets, sales prices are less than their suggested value.

### 10.2 Policy Implications

Focus on **increasing access** to lending, determining what barriers exist to make credit more accessible through lower cost products, more flexible terms and/or inclusion of existing debt into a mortgage loan product. These products should be tailored to meet the needs of the lower-income markets.

Create **financing products which can bring down the cost of quality rental housing** as an affordable alternative to homeownership for lower-income families.

### 10.3 Quick Definitions:

**Market Activity:** performance of key housing property market indicators over time, such as sales, bonds, registrations and churn.

**Market Share:** the proportionate share of the market according to certain indicators, such as loans, types of properties, or property values.

**Property Value Segment:** in order to better understand the performance of housing markets, data has been aggregated into four property value bands: properties valued under R250 000; between R250 000 and R500 000; between R500 000 and R1.2 million and over R1.2 million. This helps one to understand the various trends and strengths within each segment and to see how properties are integrating across the housing continuum, especially over time.

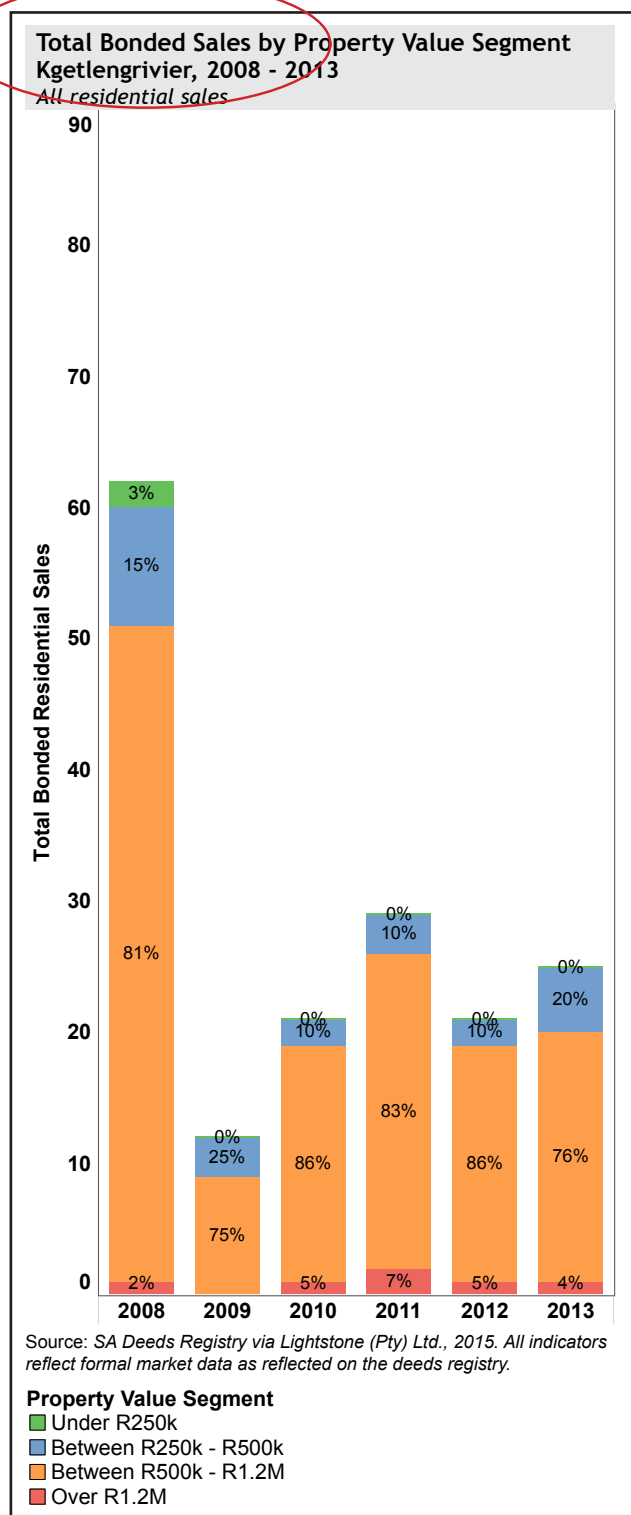
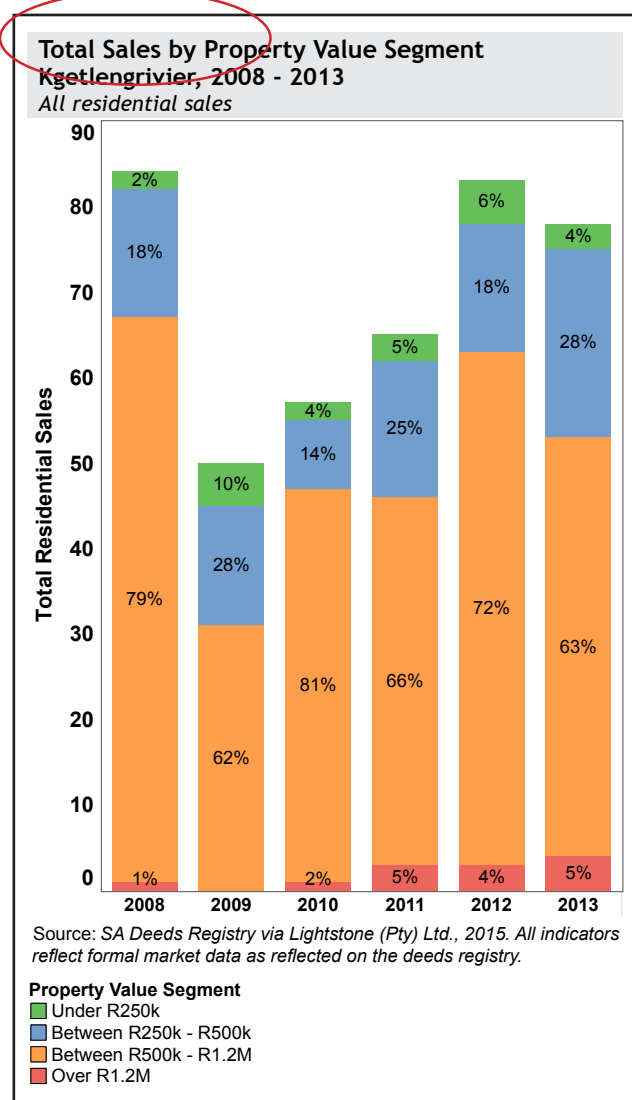
**Bonded Sale:** a transfer of deed on the deeds registry with an associated bond from a lender, including the property as collateral for the bond.

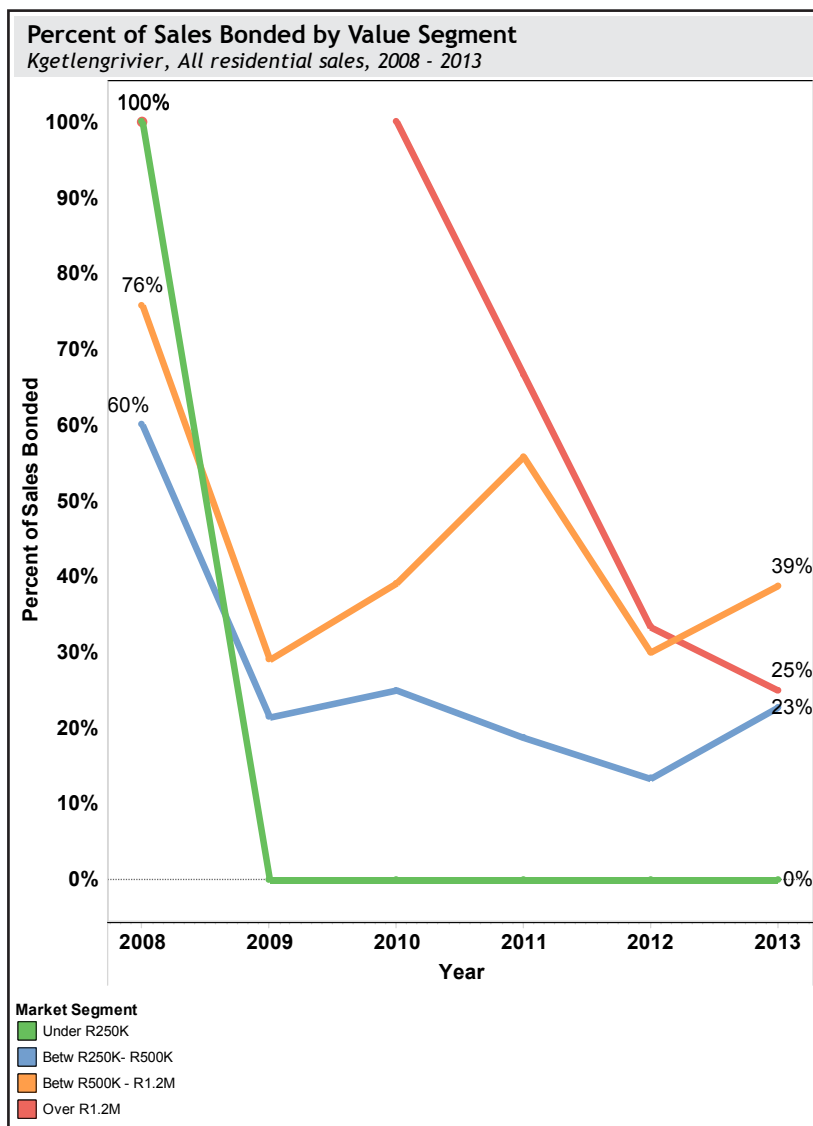
**New sale / New Registration:** the appearance of a residential property on the deeds registry for the first time. It might include new construction or previously existing units being recorded for the first time (such as previously built RDP homes).

**Resale / Repeat Sales:** the sale or transaction of a property which has existed on the deeds registry before (as opposed to a new sale or new registration).

## 10.4 Sales and Bonded Sales by Property Value Segments

About 70% of all residential sales and 80% of bonded sales in Kgetlengrivier were over R500 000 (the red and orange sections). Market share (the portion of the total) by property value segment has been consistent since 2008, suggesting a stable housing market. The relationship between sales and bonds shows the importance of access to credit to growing housing markets, in particular the lower valued segments. **The share of bonded sales under R500 000 has dropped over time, from 25% of all sales in 2009 to 20% in 2013.** This might be due to credit indebtedness which disproportionately impacts lower-income borrowers, or lack of access to affordable homes to buy. Policies that help expand access to credit and provide more housing opportunities under R500 000 can expand sales within that band, in the lower bands. Rental housing might also be a more suitable option.





## 10.5 Lending per Property Value Segments

This chart shows (by contrast to the previous charts) the percent of bonded sales within the various property value segments. The relatively few formal bonded sales in the town make the trend lines more dramatic.

**Overall, the total sales receiving bonds in Kgetlengrivier went down significantly in the past six years but the drop was not evenly distributed across all property values.** The lowest property values (the green line) experienced the greatest decrease since 2008 and flat-lined at 0% for the remaining years, perhaps due to decreased supply of housing that falls within this segment, or no access to credit.

Mid-range sales experienced relative up-and-down activity since 2009 and currently appear to be on an upsurge since 2012.

The **upper tiered properties show a very unusual drop from 2010.** This may be due to market overexposure, fewer sales, or fewer eligible buyers.

## 10.6 Sales by Property Value Segment

This map shows the **volume of sales activity (the size of the dot) by suburb across the town by property value segment (the slices of the pie)**. According to data, there were few sales in the over R1.2m range. The midrange properties (the orange and blue segments) saw most activity, with the lower-priced homes (green) having sales activity only in one area. This may be a potential sign of active (increased) supply and steady demand for the middle market.

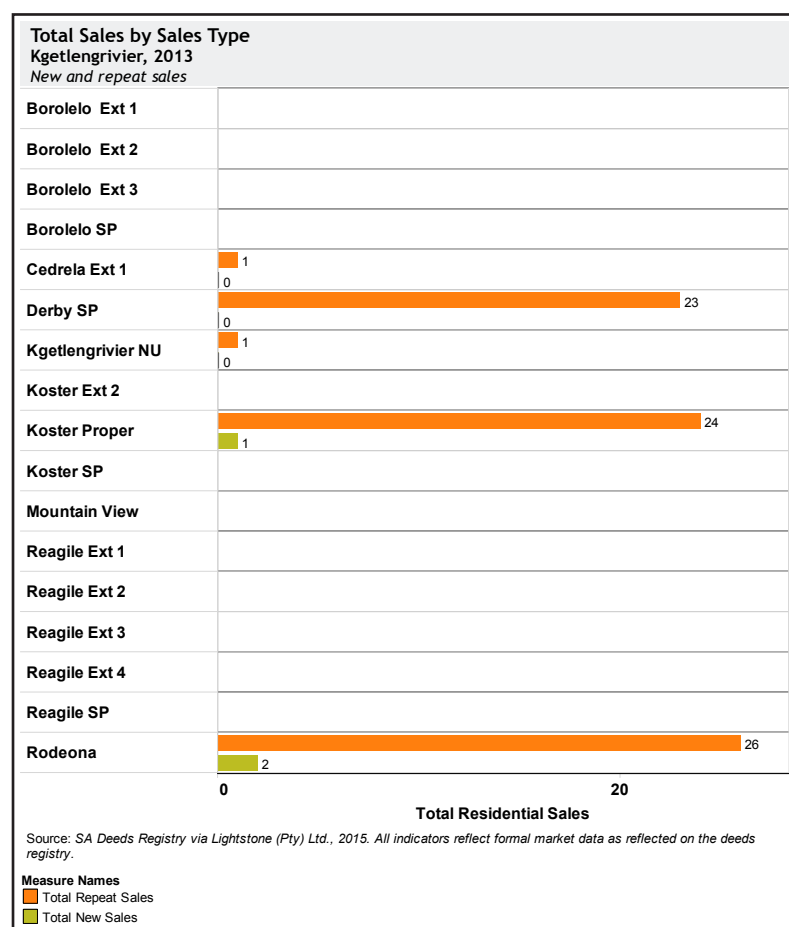
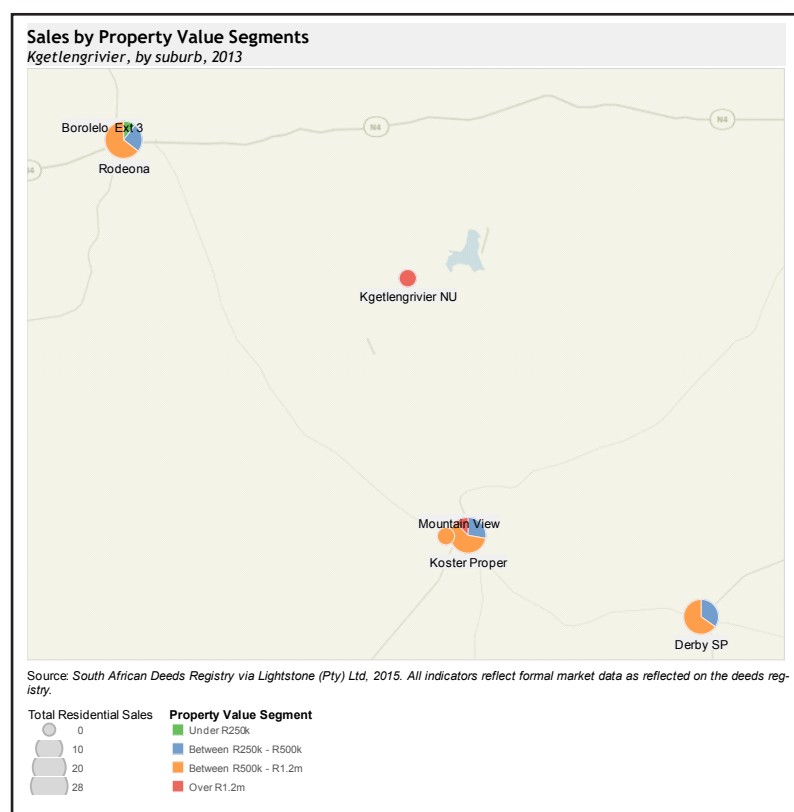
Access to credit is a significant boost or barrier to housing market growth. While some suburbs offer a range of housing price options, pinpointing product prices and types in specific areas, especially considering local affordability, is key to ensuring programme success.

## 10.7 Sales by New and Repeat Sales

An important distinction in market performance is the sale of new homes (which have never appeared on the deeds registry) and the resale of existing homes. The chart shows new (green) and repeat sales (orange) by suburb. In most mining towns, new registrations are clustered in only a few suburbs and Kgetlengrivier is the same. The very few new sales in Kgetlengrivier appear to be very concentrated within the Rodeona and Koster Proper areas.

New sales can also show the recent registration of Government-sponsored housing investment. An important point is to recognise the impact of newly registered Government investment in housing. Often these registrations may be perceived as a market distortion but the deeds issued on Government-sponsored housing represent real assets which can now be traded and loaned against and are key to moving up the housing ladder. Thus, the housing market has in fact grown.

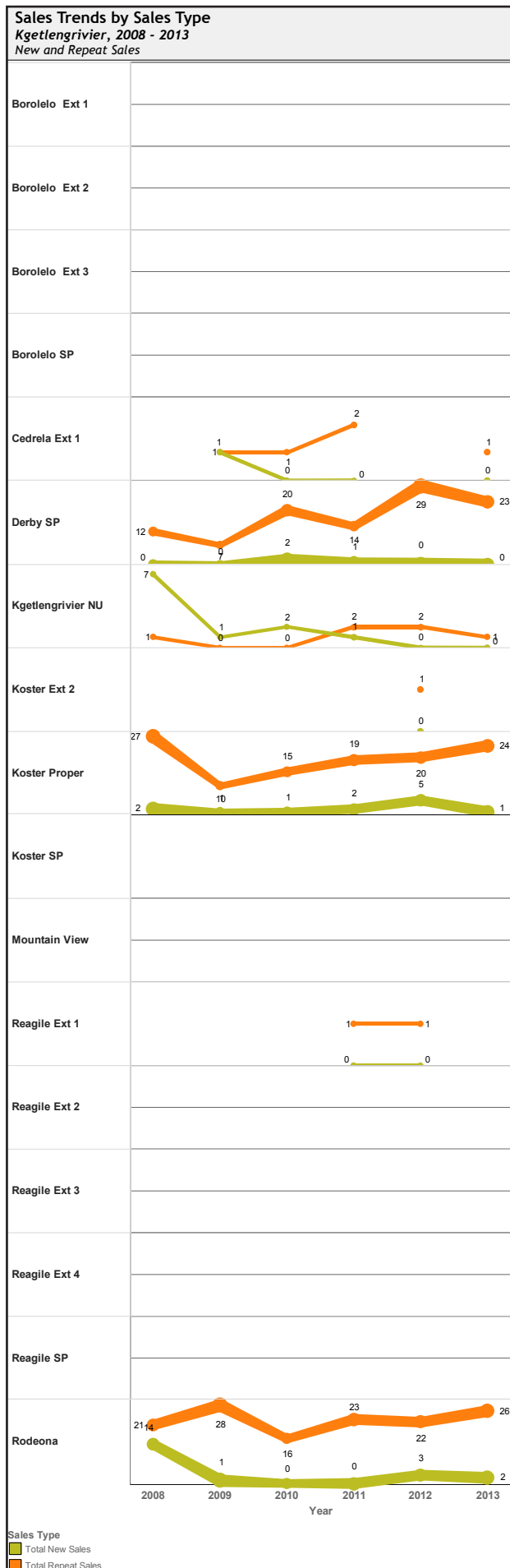
*Suburbs with no data reflect areas with no sales or new registrations.*



## 10.8 Market Activity amongst New and Repeat Sales

In Kgetlengrivier, markets are concentrated primarily in three suburbs: Derby, Koster Proper and Rodeona. The **growth and maturity of housing markets can often be detected by comparing the interaction between new and resale market transactions over time.** The growth of existing home sales (the orange line) indicates sustained interest of housing markets by borrowers and lenders.

Often, volumes of new homes in prior years become resales in later years (for example, Rodeona and Koster Proper's slight uptick of resales in 2013). The understanding of how mining companies create new units helps one understand their existing and potential contribution to expanding the local housing economy.



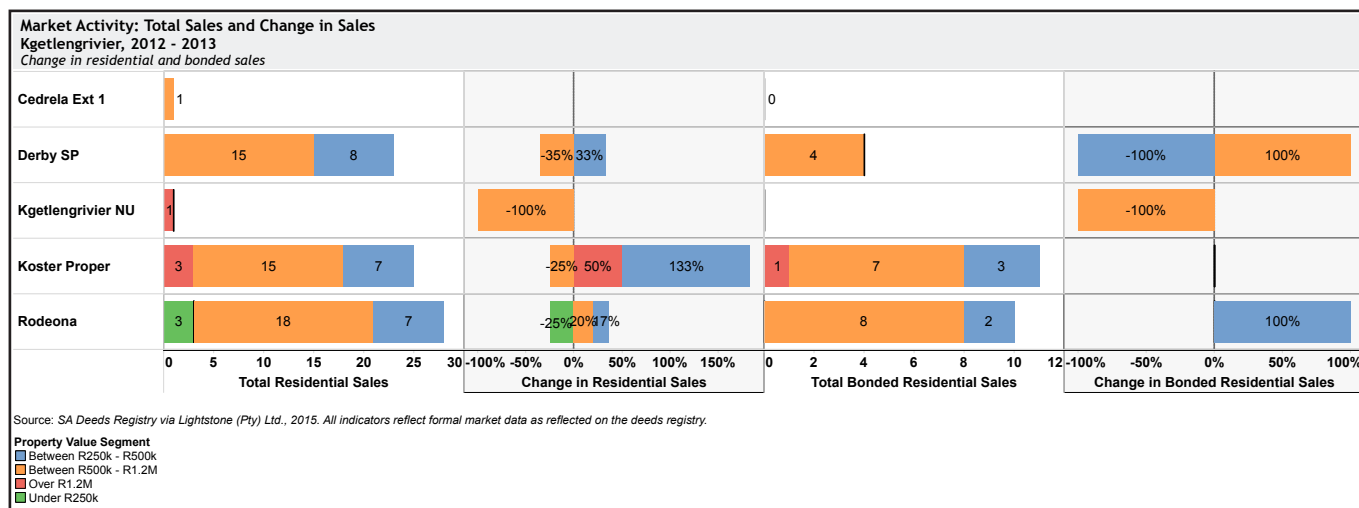


## 10.9 Total Sales by Property Value, Change from the Prior Year

This chart shows the change in activity for property sales (columns 1 and 2) and bonded property sales (columns 3 and 4) from 2012 to 2013. It is possible to see important market shifts by comparing the change in activity within particular property markets from one year to the next.

Three out of five areas experienced an increase in both sales and bonds from 2012 to 2013, but none were evident in the under R250 000 segment. Koster Proper was the only area which experienced an increase in bonded sales for the over R1.2 million segment.

*Suburbs with no information had no residential sales transactions in the past two years.*

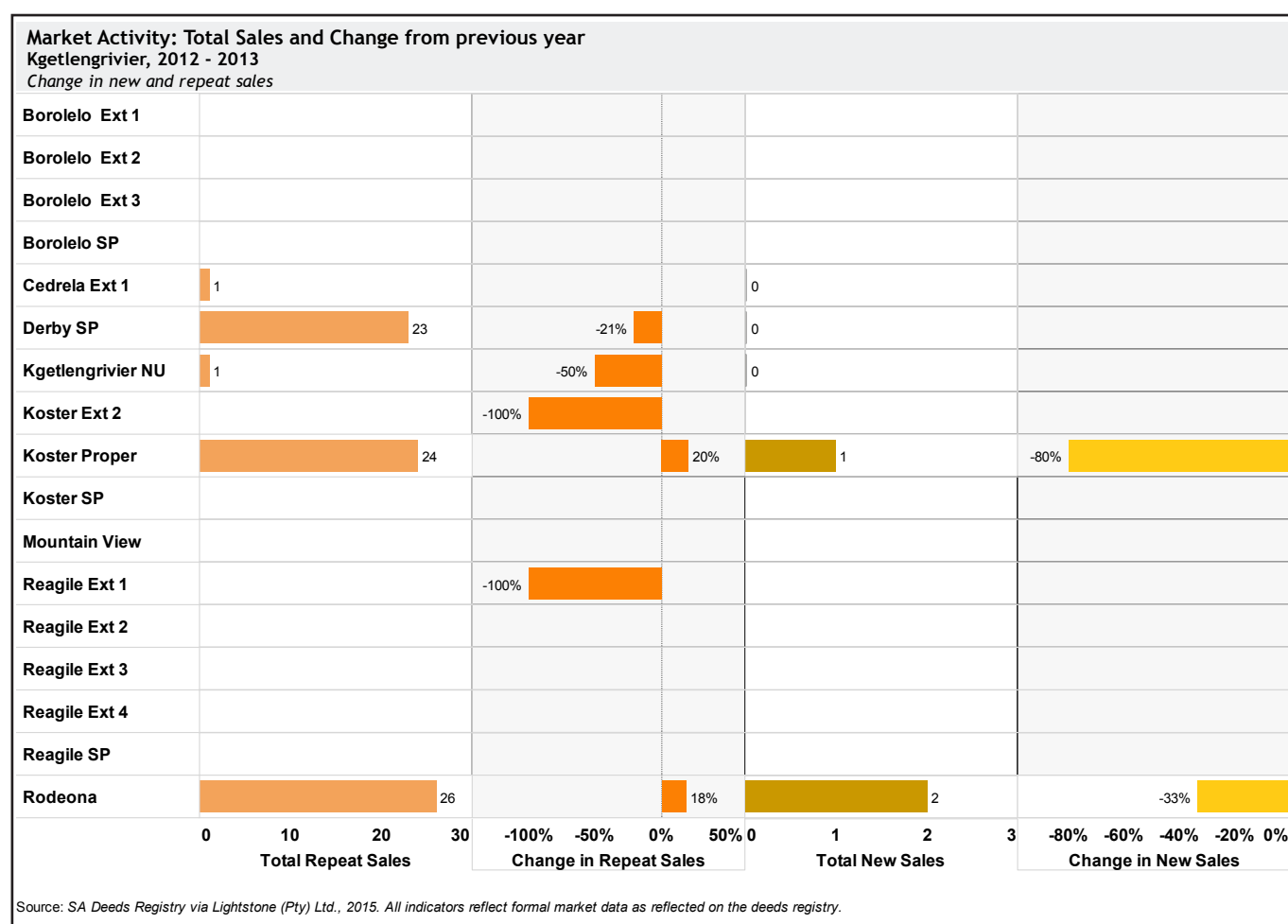


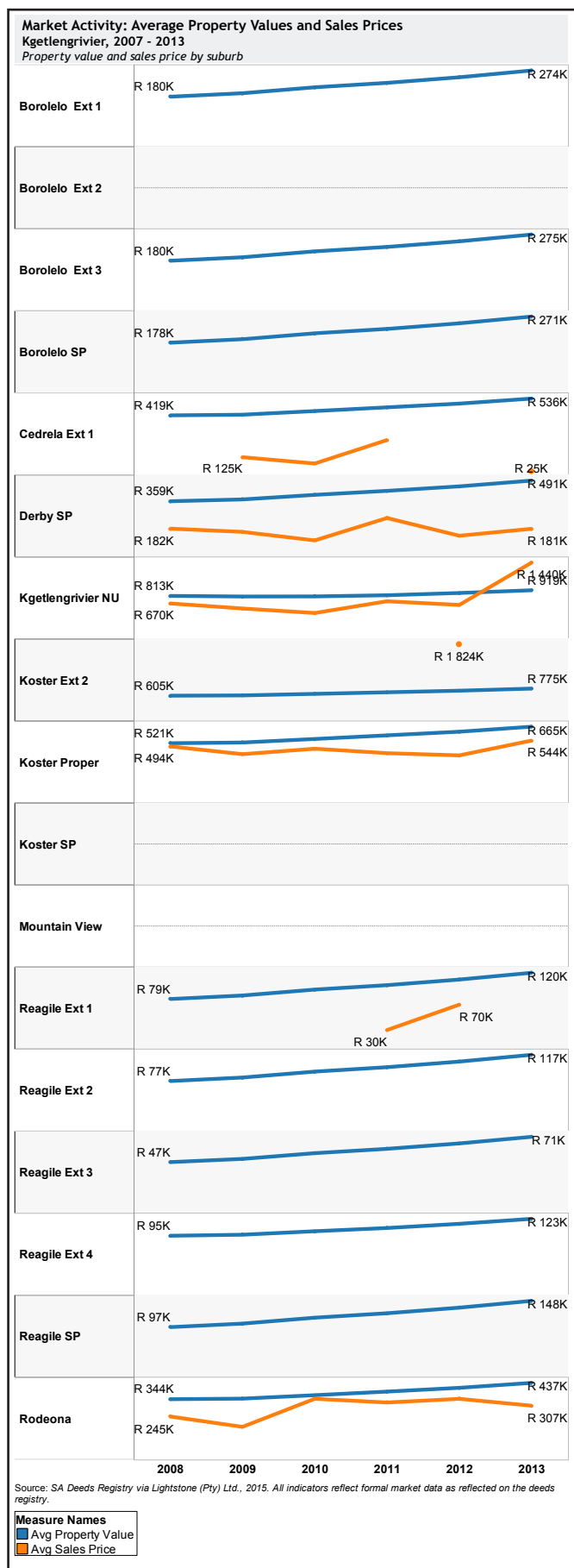
## 10.10 Change in New and Repeat Sales

This chart shows the change in new (columns 3 and 4) and repeat sales (columns 1 and 2) from 2012 to 2013. While there were 75 resales in three suburbs, there were 3 new sales in Koster Proper and Rodeona.

Many of these developments built by the Government are heading into their 8th year and become eligible for resale by their owners. By understanding when those units come on line for resale, Government can align policies that encourage the sale and development nearby, which can help leverage that prior investment, expand housing options and stimulate movement up the next rung on the housing ladder. Resales are an important means of recycling existing homes to make available more housing options.

*Suburbs with no information had no residential sales in the past two years.*





## 10.11 Average Property Values and Sales Price

The relationship between local sales prices (orange lines) and average property values (blue lines) can tell much about the activity and integration of supply and demand. Every house in a suburb has a value, determined by the number of sales, changes in prices, churn (repeat sales) and other factors present in a robust housing market. Only houses that have been sold have sales prices but this lowers the value of homes in markets with fewer sales.

**As markets formalise and strengthen, these trends inform each other more effectively and the trend lines become almost parallel** over time (such as Koster Proper and Rodeona). Sales prices within Kgetlengrivier NU actually surpassed their property value in 2012

**Sales in many areas of Kgetlengrivier have been steady and values have been incrementally increasing, indicating steady, active markets.** Sales prices in affordable areas more often reflect access to credit, than interest in the neighbourhood.

## 11. Lending Activity



### 11.1 Key Findings

**Lending is highly concentrated in Kgetlengrivier, by area and loan size.** Bonded sales are almost entirely concentrated in housing and sales over R500 000, with those loans concentrated in four central city higher-priced housing markets. While the share of lending by each of the four major banks in the Country has remained consistent, in Kgetlengrivier the annual lending fluctuated among all lenders between 2008 and 2013. Lending from non-traditional lenders doubled in Kgetlengrivier in 2011, perhaps reflecting increased mining activity requiring expanded staff deployment, or to make up for the lack of lending growth by the existing institutions.

### 11.12 Policy Implications

Policies and programmes should **target expanding access to credit, including the creation of new funds, with broader investment guidelines and possibilities and small loan programmes** with which to make financing more accessible to lower-income households. Loans to entice the development of more middle-market housing would create more integrated markets.

Programmes should also make creative financing available for rental projects.

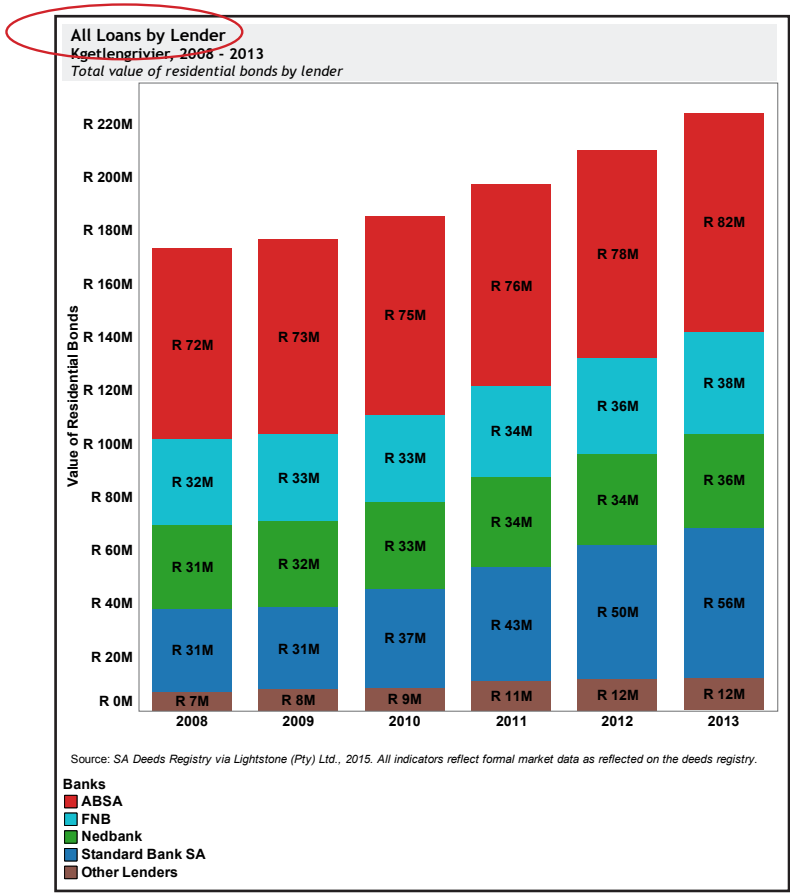
### 11.3 Quick Definitions:

**Lending Activity:** the performance of key lending indicators over time, such as bond volume, new loans and bonded sales, by lending institution.

**Portfolio Size:** the total number and value of loans given out by particular lending institutions in the study area

**Property Value Segment:** in order to better understand the performance of housing markets, data has been aggregated into four property value bands: properties valued under R250 000; between R250 000 and R500 000; between R500 000 and R1.2 million and over R1.2 million. This helps one to understand the various trends and strengths inherent in each segment and to see how properties are integrating across the housing continuum, especially over time.

**Residential Bond:** a loan made for the intention of acquiring a property, which is secured by the title to the property. These are determined by the property address and the timing with which bonds and sales transactions are recorded on the deeds registry.



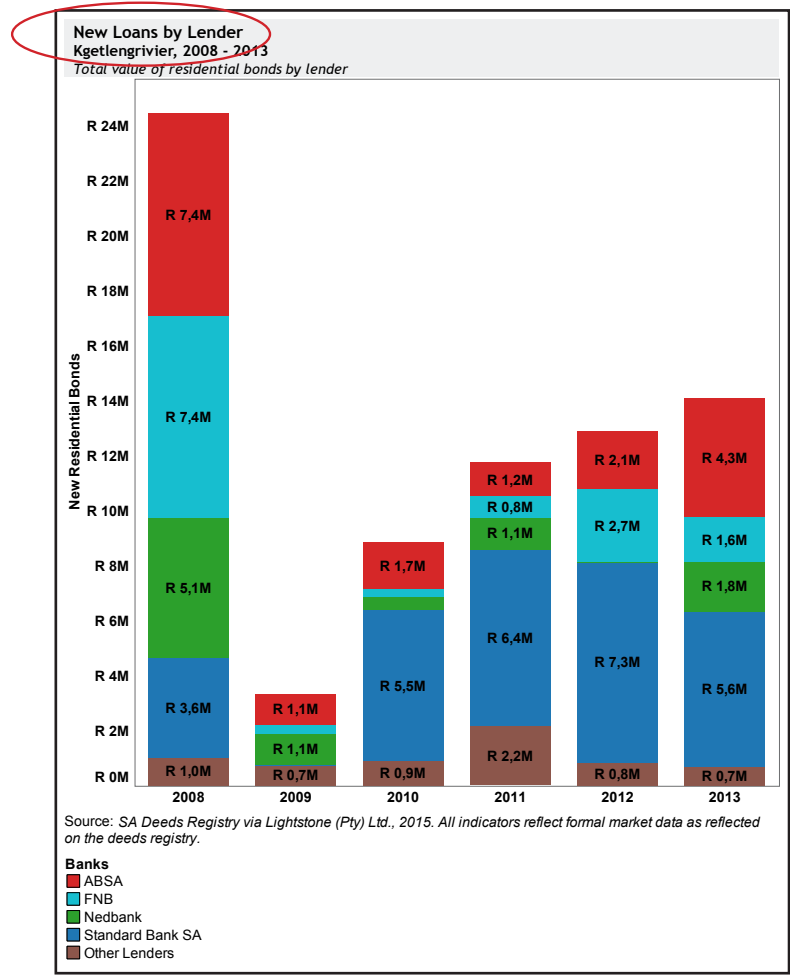
## 11.4 Lending Over Time

Loan data taken from the deeds registry can provide lending activity by lender, which has grown consistently in the area. By comparing the top chart (all loans held by each lender) and the bottom chart (activity by lender per year) it is possible to note that, while the lending in the area has consistently grown, the amount per year varies from lender to lender. As an example, annual lending fluctuated among all lenders between 2008 and 2013.

Of note is the infusion of other lenders into the area. Since 2008, lending activity has been mostly consistent, except in 2011 when it doubled.

These other lenders primarily include companies providing home loan benefits to their employees. This is most often employer-assisted lending, primarily companies providing home loan benefits to their employees. The lending may reflect increased mining activity requiring staff deployment in the area.

The following charts explore lending by bank by suburb to understand more specifically where bank investment has been made by suburb and what that may mean about financing availability for various development sites and scenarios.



## 11.5 New Loans by Lender

As markets shift, different lenders respond in different ways. These maps show the previous bar charts on a map. The first chart – all loans by lender – is represented on the top map. All loans made last year – the second chart – is shown on the lower map. **By comparing the two maps, it's possible to see where lenders invested loans in 2013 (pies in the bottom map) and how that has changed from their overall portfolio in that suburb (pies in the top map).** In Kgetlengrivier, ABSA holds a large portion of bonds made in eight areas, yet its lending in 2013 was only in three areas.

Non-traditional lenders, such as private equity funds and employer lenders, have more flexible regulatory environments and more creative, competitive financing tools. It will be important for Government to engage these investors as well to ease access to credit, lower costs of financing and share in the commitment towards growing housing markets in the mining towns.

New Loans by Lender		Kgetlengrivier					
Kgetlengrivier, 2008 - 2013		The value of new bonds by lender by suburb over time					
		ABSA	FNB	Nedbank	Standard Bank	Other Lenders	
Borolelo Ext 1	2008	R 0			R 64,000		
	2009	R 0			R 0		
	2010	R 0			R 0		
	2011	R 0			R 0		
	2012	R 0			R 0		
	2013	R 0			R 0		
Borolelo SP	2008				R 0		
	2009				R 0		
	2010				R 140,000		
	2011				R 0		
	2012				R 0		
	2013				R 0		
Cedrele Ext 1	2008	R 0	R 0		R 0	R 0	
	2009	R 0	R 0		R 0	R 220,000	
	2010	R 0	R 0		R 0	R 0	
	2011	R 0	R 0		R 500,000	R 0	
	2012	R 0	R 0		R 0	R 0	
	2013	R 0	R 0		R 0	R 0	
Derby SP	2008	R 115,000	R 480,000	R 379,591	R 487,500	R 104,000	
	2009	R 66,000	R 0	R 368,723	R 0	R 0	
	2010	R 0	R 0	R 0	R 475,000	R 0	
	2011	R 400,000	R 75,000	R 0	R 1,540,500	R 0	
	2012	R 0	R 0	R 0	R 840,000	R 200,000	
	2013	R 1,020,000	R 0	R 250,000	R 982,000	R 0	
Kgetlengrivier NU	2008	R 1,500,000	R 600,000	R 1,000,000	R 0	R 0	
	2009	R 0	R 0	R 0	R 0	R 0	
	2010	R 0	R 0	R 0	R 432,000	R 0	
	2011	R 0	R 700,000	R 0	R 0	R 0	
	2012	R 0	R 0	R 0	R 1,860,000	R 0	
	2013	R 2,136,000	R 0	R 0	R 0	R 0	
Koster Ext 2	2008		R 0			R 0	
	2009		R 0			R 0	
	2010		R 0			R 0	
	2011		R 0			R 0	
	2012		R 0			R 0	
	2013		R 0			R 0	
Koster Proper	2008	R 3,946,768	R 4,753,384	R 2,251,560	R 1,524,400	R 0	
	2009	R 722,500	R 350,000	R 763,807	R 0	R 0	
	2010	R 1,356,000	R 280,000	R 0	R 2,771,600	R 0	
	2011	R 824,000	R 0	R 1,149,526	R 835,000	R 1,660,000	
	2012	R 1,820,128	R 902,500	R 0	R 3,813,238	R 0	
	2013	R 1,175,000	R 530,000	R 1,539,918	R 1,772,500	R 584,000	
Reagile Ext 1	2008	R 0	R 0	R 0	R 170,000	R 0	
	2009	R 0	R 0	R 0	R 0	R 0	
	2010	R 0	R 0	R 0	R 0	R 0	
	2011	R 0	R 0	R 0	R 0	R 0	
	2012	R 0	R 0	R 0	R 0	R 0	
	2013	R 0	R 0	R 0	R 0	R 0	
Reagile Ext 2	2008	R 0		R 251,995	R 0		
	2009	R 0		R 0	R 0		
	2010	R 0		R 0	R 0		
	2011	R 0		R 0	R 0		
	2012	R 0		R 0	R 0		
	2013	R 0		R 0	R 0		
Reagile SP	2008	R 0	R 94,104	R 0		R 0	
	2009	R 0	R 0	R 0		R 0	
	2010	R 0	R 0	R 0		R 0	
	2011	R 0	R 0	R 0		R 0	
	2012	R 0	R 0	R 0		R 0	
	2013	R 0	R 0	R 0		R 0	
Rodeona	2008	R 1,792,188	R 1,474,000	R 1,188,328	R 1,403,700	R 890,273	
	2009	R 300,000	R 0	R 0	R 0	R 520,000	
	2010	R 351,700	R 0	R 462,234	R 1,696,100	R 890,000	
	2011	R 0	R 0	R 0	R 3,566,000	R 500,000	
	2012	R 250,000	R 1,772,000	R 0	R 781,000	R 630,000	
	2013	R 0	R 1,110,250	R 0	R 2,889,500	R 100,000	

Source: South African Deeds Registry via Lightstone (Pty) Ltd, 2015. All indicators reflect formal market data as reflected on the deeds registry.

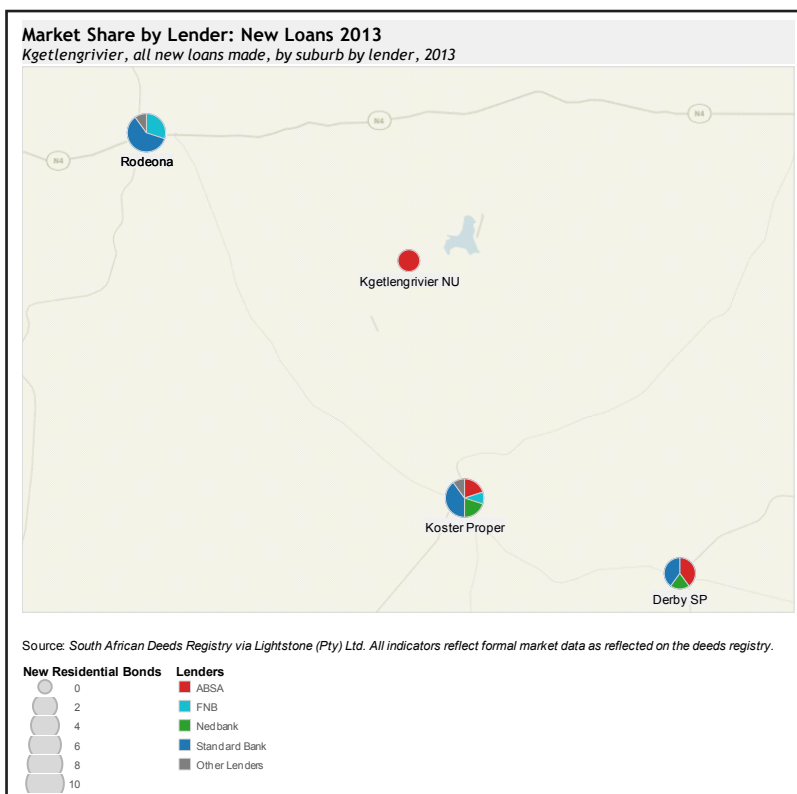
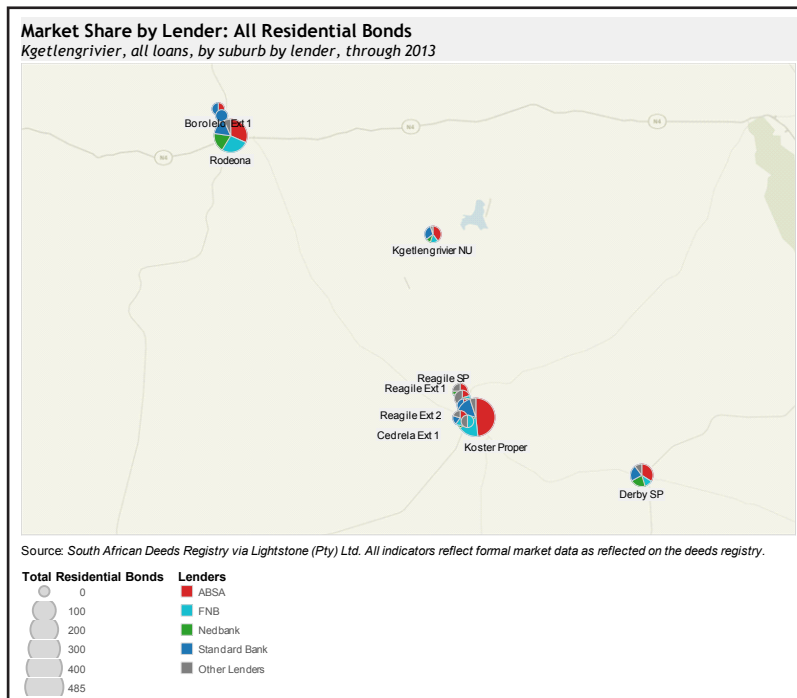
Banks	
<span style="color: red;">■</span>	ABSA
<span style="color: blue;">■</span>	FNB
<span style="color: green;">■</span>	Nedbank
<span style="color: darkblue;">■</span>	Standard Bank
<span style="color: brown;">■</span>	Other Lenders



## 11.6 Market Share

The understanding of market share at the local level is important in understanding the potential for end user finance, where gaps might exist and how to make the case for more lending. It is interesting that in 2008, almost every suburb had significant lending and in 2013, only four of nine suburbs in Kgetlengrivier had lending activity.

Comparing lending over time and by suburb also shows which lenders perceive value or risk.



## 12. Leverage



### 12.1 Key Findings

The presence of older **Government-sponsored units within the municipality represent an important opportunity to leverage that investment** in affordable housing in the years ahead, as owners seek to sell and move up the housing continuum if opportunities are positioned properly. About 46% of all registered properties in Kgetlengrivier were sponsored by the Government, the second highest level of all mining towns studied. The value of these homes, if sold in the private market, can be applied towards the cost of a new home.

This situation can be used to drive developers to build more gap housing and financiers to finance RDP acquisition loans.

### 12.2 Policy Implications

Policies should focus on enticing developers to build more housing in the gap market and encourage lending to the RDP and other lower-cost home markets. Sites could be prioritised which connect these RDP neighbourhoods to other more active housing markets to encourage mixed income development.

To encourage an increase in the supply of gap housing, governments can **unlock sites, supply infrastructure or grants, or hook-up fee discounts**. Governments can also reduce the cost of construction finance, which can all be passed down to the buyers in the form of lower sales prices.

Governments can create programmes using funds pooled from a range of Government and private sector partners, that provide bonds for small properties and offset risks through loan guarantees, loan loss reserves and interest rate discounts. Funds can also be organised to implement homebuyer counselling, debt consolidation and moderate rehab costs of the existing home to ensure loan performance of the portfolio.

These programmes would work together in the mining towns to create better social, housing and economic integration. In Kgetlengrivier, this might be those areas between Koster Proper and Rodeona; and those higher priced more active markets; and Reagile Ext 4.

### 12.3 Quick Definitions:

**Leverage:** the ability to use the percentage of the property that has been paid off as a down-payment for another property.

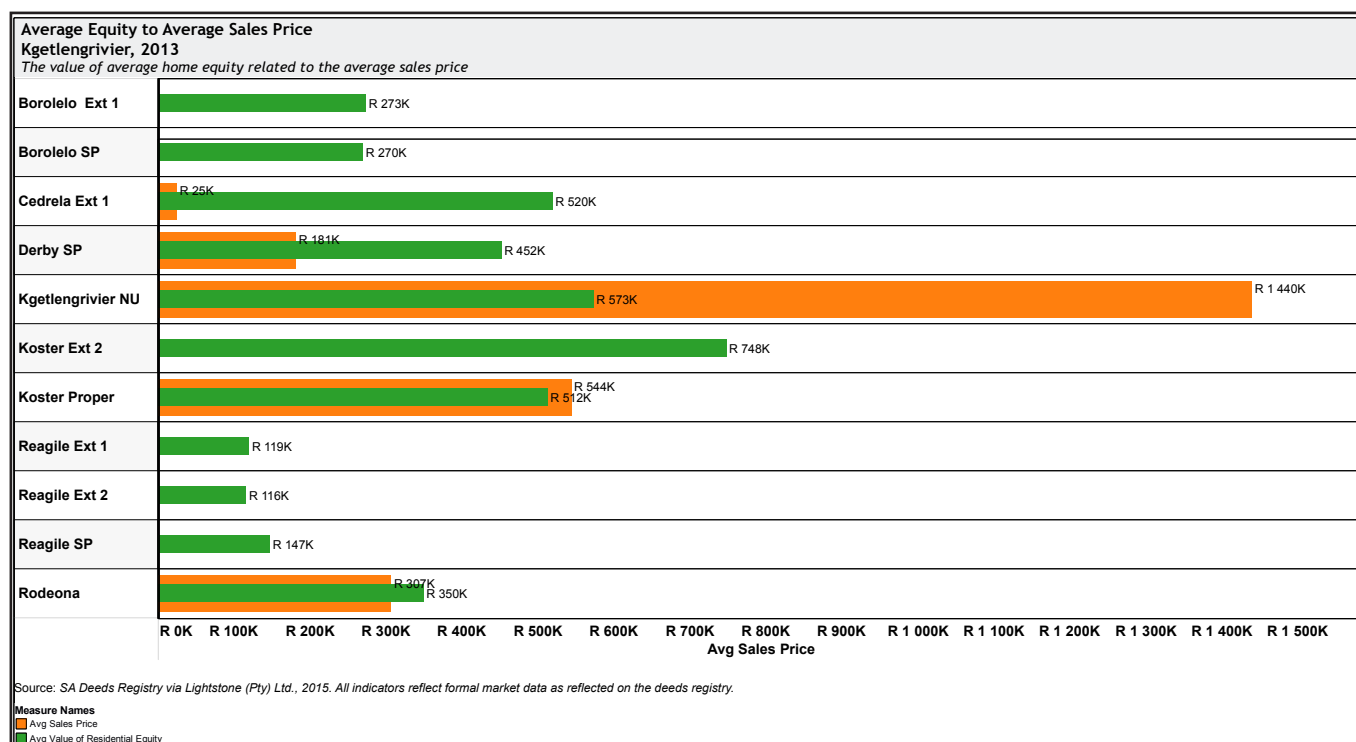
**Equity:** the value of the residential property less the outstanding balance of the bond. This represents the value of ownership built up in a property and is often used as the down-payment for the owner's next house purchased up the housing ladder.

## 12.4 Equity Fills the Gap

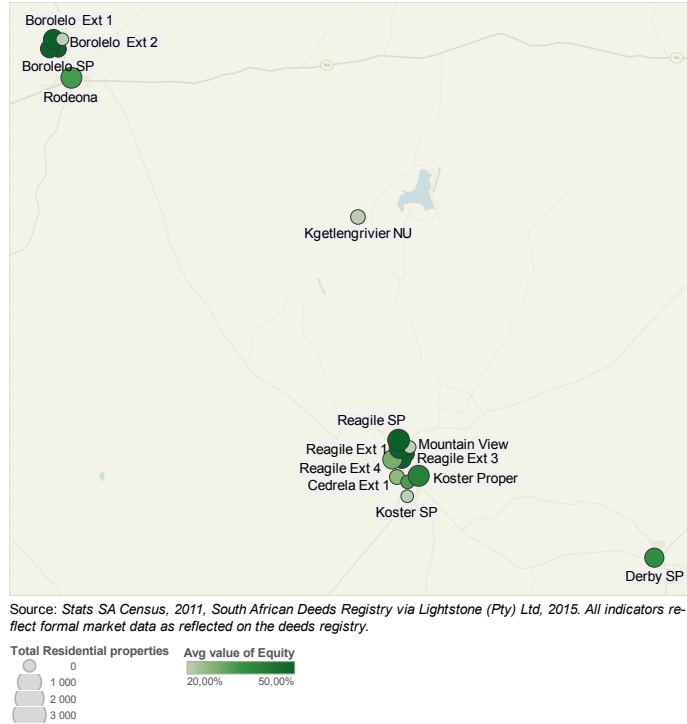
Equity is the value of one's home less the amount owed to the lender. The chart shows the average equity per suburb (the green bar) compared to the average sales price per suburb. This helps to show what portion of the sales price might be paid for by homeowners' equity. If a homeowner in Rodeona wished to purchase a home in Koster Proper, they could sell their home and apply it towards the cost of the new home, reducing the amount they would have to borrow. Instead of borrowing over R500 000 (the average sales price), they would only need about R200 000 (the orange bar in Koster Proper minus the green bar in Rodeona). Thus, equity makes homeownership in higher-priced neighbourhoods affordable, expanding housing options. **Equity closes the housing gap for less affluent homeowners because their properties are less likely to have a bond and those markets have experienced more appreciation of value.** It is important to consider this value in addition to a homeowner's income.

Equity invested by homeowners also **reduces risk by increasing their financial stake in their home**. This is the same way upper-income families move up the housing continuum and is now available at scale for lower-income families as well, thanks to the massive Government investment in homes for the poor. This requires financing available for the lower-income buyers, something to explore with lender partners.

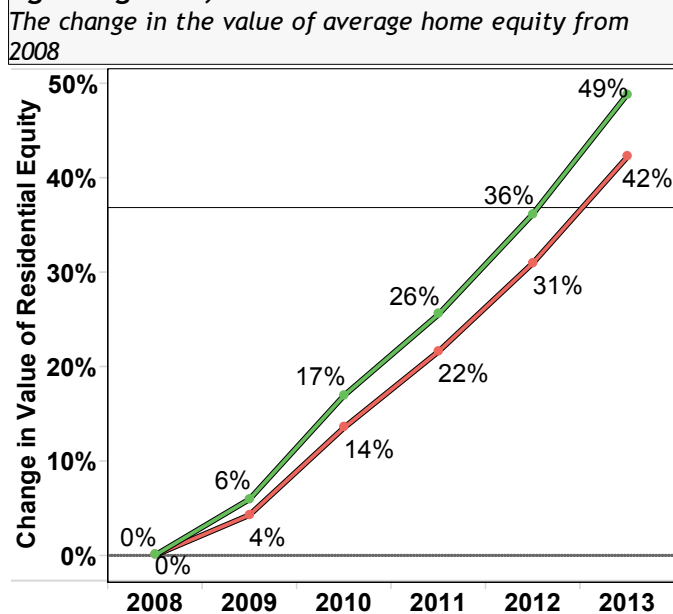
While averages in such diverse housing markets are hard to consider meaningfully, the picture does indicate that purchasing power increases – and gaps close – when equity is taken into consideration.



### 5 Year Equity Growth Kgetlengrivier, 2013 Rates of equity growth, since 2007 to 2013



### Growth in Equity Kgetlengrivier, 2008- 2013 The change in the value of average home equity from 2008



Source: SA Deeds Registry via Lightstone (Pty) Ltd., 2015. All indicators reflect formal market data as reflected on the deeds registry.

**Change in Equity**  
■ Affordable properties (under R500 000)  
■ All residential properties

## 12.5 Accessing Equity Closes the Housing Gap and Can Drive Demand

Understanding the difference in equity growth rates on a map allows a better understanding of which property markets can be leveraged to support more new development. Many higher-priced areas have experienced modest equity growth (grey areas) – or loss (red areas) – over the past five years, likely due to increasing sales prices (rather than amortisation as new buyers tend to have less equity and this market has been very active recently). The greatest equity growth over five years (green areas and green lines) has been in less developed areas with fewer sales and values have accrued to the existing homeowners.

Homes worth less than R500 000 typically have fewer loans, a faster-growing value and an initial housing cost that was low or free (thanks to Government investment in housing). Homebuyers can reduce the amount they have to borrow through savings or the equity in their home, if they have an existing house that they can sell. This lowers their monthly payment or increases the price they can afford. Leverage is the practice of using this equity to increase their housing affordability. This indicator thus becomes very useful for meeting – and closing – the housing gap.

**Kgetlengrivier's properties under R500 000 show consistently higher growth in equity than the market overall, suggesting a good source of funding the next house up the housing ladder.**

Constraints to using leverage in affordable housing markets include the availability of credit for potential buyers to pay the full value of the house, maximising the equity available to the homeowner, the availability of homes up the housing ladder to buy and, in the case of RDP owners, the ability to sell Government-subsidised stock (which comes with an eight-year resale restriction). Other constraints include household indebtedness and the willingness of existing homeowners to sell their most important asset.

However, policies that address these constraints can expand the housing ladder in remarkably quick and cost-effective ways. Closing cost assistance, interest rate write downs and loan loss funds all cost a fraction of new construction and put the opportunity – and choice – in the hands of the homeowner, rather than the Government.

## 13. Affordability Profile



### 13.1 Key Findings

Kgetlengrivier's **affordability ratio of 2.9 is just above the mining town average of 2.8**, meaning it takes, on average, about 3 times the average municipality income to afford the average house here. Despite a below-average monthly income, there remain large disparities among incomes and affordable housing access in certain areas within the municipality.

In some areas, sales prices are very low, probably the result of lack of credit access forcing sellers to sell for whatever cash might be offered regardless of how much the house may be worth.

### 13.2 Policy Implications

Affordability constraints, due to below-average incomes, can be addressed through housing strategies and solutions that propose **creative financing tools and techniques which can reduce financial barriers** (such as down-payments, interest rates and principal requirements) as well as **unlocking equity rather than simply trying to push costs down**.

Lowering the cost of financing can also increase the amount which can be borrowed, that can increase sales prices and the amount of equity a home seller will be able to access to buy their next home.

Lack of adequate affordable supply in areas with very low incomes can often be quickly addressed through the carefully considered provision of **well-located, quality rental housing**.

### 13.3 Quick Definitions:

**Affordability:** affordability is generally defined as the ability to allocate less than 25-30% of a household's monthly income towards housing costs. While upper-income families' incomes enable them to cover the cost of producing and selling housing units and thus provides many housing options, lower-income families struggle because their income often does not adequately cover the cost of producing and selling a housing unit. Supply is limited and others must collaborate to provide decent affordable housing.

**Affordability Ratio:** the purchasing power of local incomes to afford local sales prices. The local average sales price is divided by the target house price. This shows the relationship between local incomes and local sales prices – a larger number means that local sales prices are harder for local income households to afford, implying a mismatch between local housing options and residents.

**Housing Gap:** the shortfall between the target house price a household can afford and the sales price (or construction cost) of a house. This can be calculated by the difference between the target affordable price and the cost or price of the house.

**Target House Price:** the sales price affordable to local households, which is calculated using the average area median income available for housing (25% of monthly income) using standard underwriting criteria (typically 20 year amortisation at 11%, with 5% down).

### Mind the Gap Table

Kgetlengrivier, 2013

Affordability indicators per suburb

Subplace Name	Avg Monthly Income	Target house price	Average Sales Price	Affordable Price Gap	Affordability Ratio
Borolelo Ext 1	R 0K	R 0K			
Borolelo Ext 2	R 0K	R 0K			
Borolelo Ext 3	R 0K	R 0K			
Borolelo SP	R 3K	R 73K			
Cedrela Ext 1	R 12K	R 311K	R 25K	R 286K	0,1
Derby SP	R 12K	R 306K	R 181K	R 124K	0,6
Kgetlengrivier NU	R 9K	R 245K	R 1 440K	R -1 195K	5,9
Koster Ext 2	R 8K	R 200K			
Koster Proper	R 12K	R 325K	R 544K	R -220K	1,7
Koster SP	R 1K	R 31K			
Mountain View	R 2K	R 54K			
Reagile Ext 1	R 4K	R 104K			
Reagile Ext 2	R 4K	R 95K			
Reagile Ext 3	R 3K	R 74K			
Reagile Ext 4	R 2K	R 51K			
Reagile SP	R 7K	R 186K			
Rodeona	R 10K	R 277K	R 307K	R -30K	1,1

Source: StatsSA Census 2011 (with CPI increase); South African Deeds Registry via Lightstone (Pty) Ltd, 2015. All indicators reflect formal market data as reflected on the deeds registry.

## 13.4 Affordability

Actual affordability relies on the understanding of local household income to determine what is reasonably afforded by existing residents, how much of a gap exists and what is required to ensure more realistic affordability. The Affordability Ratio is determined by dividing the purchase price affordable to the average household income, by the average sales price. **Nationally, it takes three times the average income to afford the average sales price; within the mining towns, this ratio averages 4.** This doesn't mean that families are paying that, it means that most homes on the deeds registry are not affordable to the majority of South Africans. However this indicator provides an important benchmark, by providing a sense of affordability levels and how well local markets might be meeting the needs of local residents.

**In Kgetlengrivier, there appear to be gaps in affordability in some markets, as shown by the negative price gap, the amount by which local sales prices are higher than what's affordable to local residents. Price gaps in Rodeona, Kgetlengrivier NU and Koster Proper are negative, perhaps the result of more recent housing development which drove up recent sales prices past the income levels.** The Kgetlengrivier NU represents all the non-urban areas surrounding the town, so it's not possible to pinpoint why or where prices and incomes are so unbalanced.

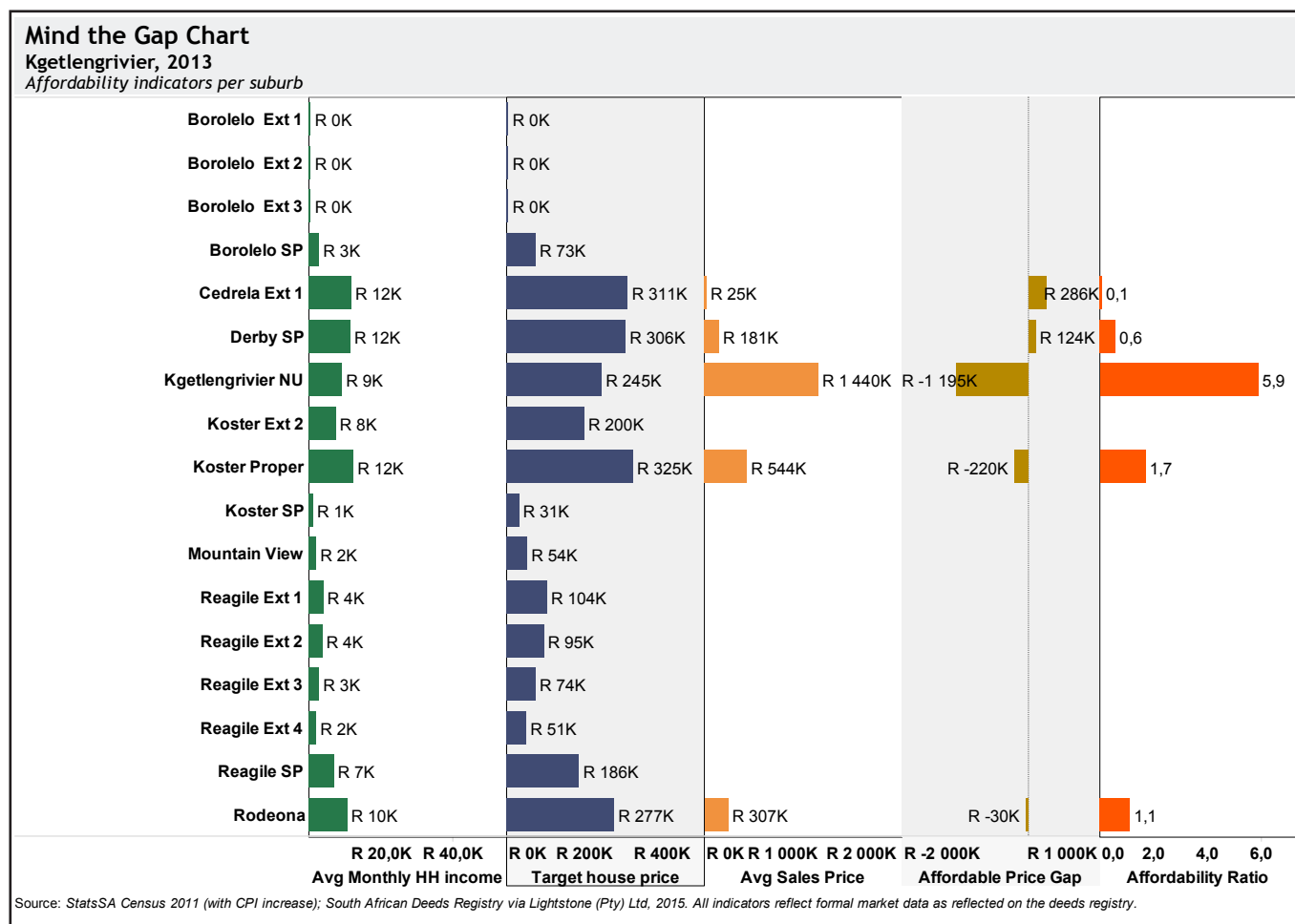
The introduction of new products or strategies is more likely to be sustainable if they are responsive to current residents. The target home price in column 2 can also be compared to estimated potential per-unit construction costs to determine the amount of subsidy which may be required to build and sell the units to local residents.

## 13.5 Mind the Gap

This chart is identical to the previous chart but shows bar lines to better visualise difference across the area. These tables measure relative affordability for each suburb in the target area in three ways: starting with the average income (column 1), it calculates the average sales price affordable to the average family using standard underwriting terms (5% down, 11% for 20 years, up to 25% of household income, column 2). It compares that to the area's average sales price (column 3). Column 4 ("Affordable Price Gap") shows the difference between the average sales price and the local target (affordable) house price. Column 5 divides the two values to show the affordability ratio, the number of times it might take the local income to afford the local sales price. As an example, in Koster Proper, it takes 1.7 times the average income to afford the average sales price. In 2013, only four suburbs had formal residential sales.

In Kgetlengrivier, the average income is about R5 100, the average target house price is R134 000 (how much house that income can afford) and the average sales price is R357 000. **Thus, in 2013, it took more than double the average income to afford the average house.** These very high level indicators are useful when comparing affordability, to see which areas are more or less affordable. This helps one to understand how housing strategies need to address affordability within the town, including what resources or policies might be required to help fill these gaps (ie. affordable financing, buyer subsidies).

When affordability is an issue, perhaps equity of existing homeowners can help fund the gap. Policies will need to encourage the sale of lower-cost homes that can allow housing purchases further upstream for lower-income households.

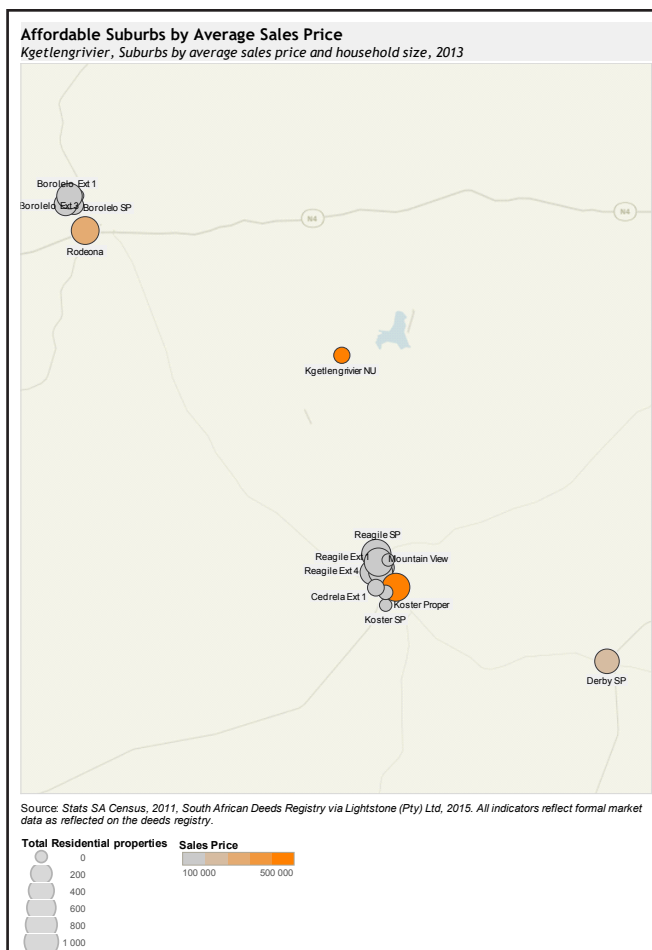
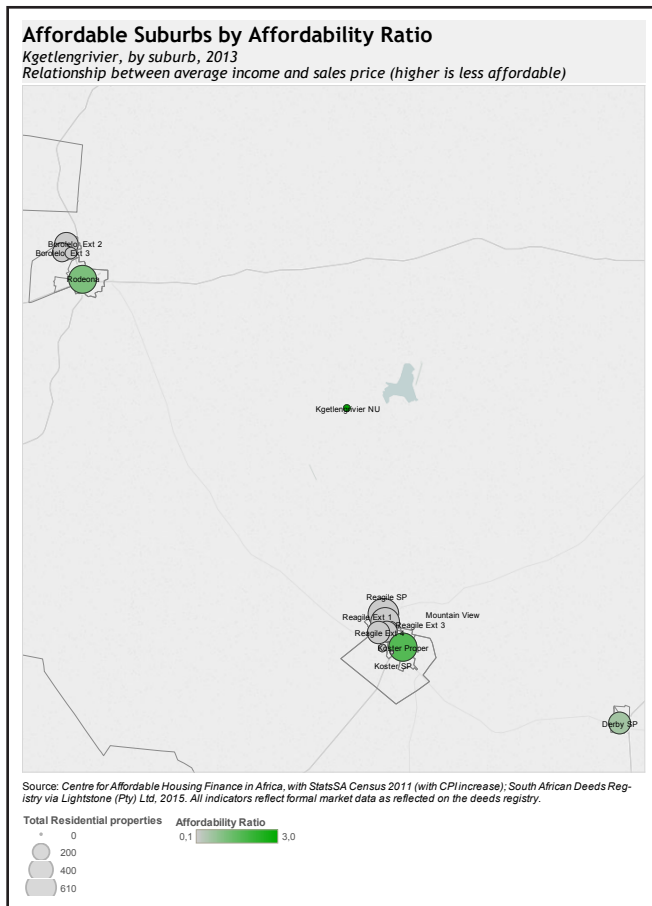




## 13.6 Mapping Affordability

These maps show the importance of taking local household income, or purchasing power, into the understanding of affordability. The first map shows average sales prices by suburb, with the darker areas having higher prices. The second map shows the same area by affordability ratio, with the darker areas (those with higher affordability ratios) showing greater difference between suburb incomes and suburb sales prices. **While some areas appear affordable by sales price (such as Rodeona), they are not as affordable when considering local incomes (the darker green on the second map).** These analyses do not take into account the indebtedness of potential buyers, an important factor in determining bond eligibility. Rental housing, therefore, might be an important option towards providing well-located and professionally managed affordable housing in those areas.

*The areas with no dots have no residential properties on the deeds registry – they are farms or open space, mines or informal settlements.*



## 14. Rental Index



### 14.1 Key Findings

In Kgetlengrivier, **18% of households rent**, according to the 2011 StatsSA census, which is about half the average of 30% amongst the mining towns in the study.

The **opportunity for rental housing development within Kgetlengrivier is not aggregated in any single suburb**. Those areas with greater density, modest incomes and affordability challenges are more likely to support quality, professionally managed, affordable rental housing.

### 14.2 Policy Implications

**Due to the cyclical, commodity- and demand-driven nature of these towns' primary industry, rental housing becomes a very important housing solution.**

Rapidly changing housing demand-driven by mining activities makes a strong case for prioritising quality rental housing. If rental housing is well-situated and convenient to transport and centrally located in dense areas, it can bring social and economic cohesion and vibrancy to housing markets over the longer term. Rental housing also provides flexibility to employers and workers as mining markets expand and contract from time to time. The densifying of housing markets requires infrastructure upgrades and financial mechanisms which provide for long-term affordability and sustainability.

### 14.3 Quick Definitions:

**Rental Index:** A tool used to measure the potential suitability of local areas for rental housing, as measured by a group of five indicators which support rental housing including density, area median income, the affordability ratio and market growth as measured by the housing performance index. A higher score implies greater success for rental housing.

**Affordability Ratio:** the purchasing power of local incomes to afford local sales prices. The local average sales price is divided by the target house price. This shows the relationship between local incomes and local sales prices – a larger number means that local sales prices are harder for local income households to afford, implying a mismatch between local housing options and residents.

**Area Median Income:** the percentage of the average local income to the municipal average income, which allows for understanding of the income relative to the market overall and across many municipalities.

**Housing Performance Index:** the growth of the local suburb in six key housing market indicators as compared to the municipality growth. A higher number implies more growth.

**Percent households renting:** the number of surveyed households that rent divided by the total number of households, per StatsSA census 2011. This includes everything from bedrooms and backyard shacks to single family homes and sectional title units.

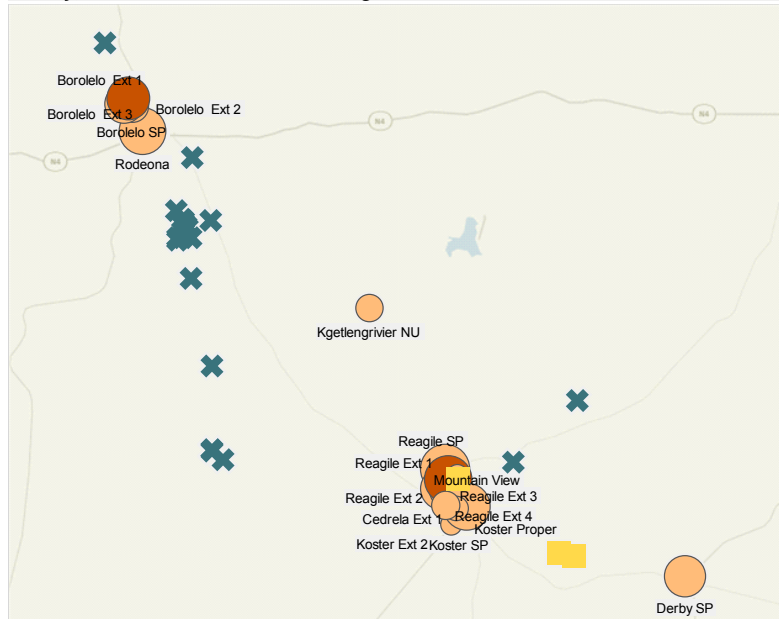
**Population Density:** the number of people per square hectare of the suburb, as provided by StatsSA.

**Tenure:** the terms under which land or buildings are held or occupied, eg. rental, ownership, etc.

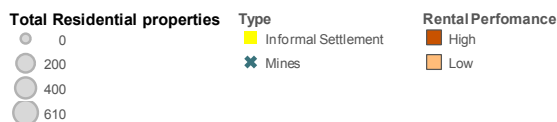
## Rental Index

### Kgetlengrivier, 2013

Areas which scored highly on a group of indicators targeting rental housing, including density, moderate incomes and market growth.



Source: Centre for Affordable Housing Finance in Africa, 2015. All indicators reflect formal market data as reflected on the deeds registry.



## 14.4 Rental Housing: Driving an Affordable Housing Option

Rental housing is one of the most efficient and effective ways to provide affordable accommodation. In most South African towns, this means backyard shacks, an important but inefficient way of meeting overwhelming housing need. While a social housing sector exists, targeting lower-income families in multi-unit buildings, these are primarily in large metropolitan areas. **Many private developers and investors are considering expanding significantly into the rental segment. If the demand is better understood, governments can meet housing backlogs quickly and affordably by promoting policies which target affordable rental housing.**

Several conditions are crucial for the creation of successful and sustainable rental markets: density, high demand and affordability. In order to sustain rental housing at scale, projects must be able to achieve density to keep costs down and access ready markets with good proximity to jobs, transport and educational opportunities to keep projects running smoothly. It is possible to bundle those indicators and find those areas primed for rental housing.

## 14.5 Locating Rental Housing Markets

The map shows those areas more dense than others, with moderate incomes and housing market growth, all important factors when considering the placement and promotion of rental housing. **In Kgetlengrivier, it appears that none of the indicators reflecting rental market potential are aggregated in any one suburb. Rental market potential must thus be explored more closely, locally.**

Security of tenure through a lease agreement means that residents have access to quality, accountable property management and consistent utility access and can even build up their credit history with positive rent and utility accounts. Rental housing providers must locate their properties competitively to ensure monthly occupancy, so rental housing provides affordable access to transport hubs, jobs and community services.

Rental Index Indicator	Method	Implies	Weight
Median Income	80 -120% area median income	Affordability	35%
Population Density	Exceeds metro average	Density	35%
Housing Performance Index	Growing	Demand	20%
Affordability Ratio	Ratio exceeds metro average	Affordability	15%

## 15. Key Concepts

The definitions of the concepts used in this profile are set out in alphabetical order below.

### 15.1 Affordable

Traditionally, affordable refers to housing or areas with prices or values below the overall market which target below-average incomes. It is often defined as R500 000 or less (but can be higher or lower depending on intent) because this is the amount that a household earning less than R16 000 on average can afford, which is the target limit of many Government subsidy schemes. Affordability is the relationship between the cost of housing (a mortgage bond payment or rent) and the income of the tenant or owner. Affordable housing is that which can be rented or purchased within certain constraints: in this report, with a mortgage equal to 28% of the borrower's income, at 11% over 20 years, with 5% of the sales price paid as down-payment. Areas where the average income can afford the average sales price or more, are considered affordable.

### 15.2 Affordability Ratio

This ratio measures relative affordability by comparing the **AVERAGE** sales price to the average income within the same area – higher ratios meaning less affordability. The average sales price is divided by the **AFFORDABLE** sales price, which is calculated as the present value of typical mortgage terms using 28% of the average income (95% of the average sale price, at 11% for 20 years). A ratio of 1 means that the average home price is exactly equal to the average household income. Ratios over 1 represent the number of times by which the average income must be increased to afford the average home.

### 15.3 Appreciation

The rate, or percent change, over time between two values (most often price or value) is calculated by dividing the difference between the beginning and end values of the property in the timeframe, by the beginning value. The result is the percent by which the property value or price changed. It is a valuable means of comparing the rate of change across very different property markets, areas or market sizes.

### 15.4 Average

The result obtained by adding several amounts together and then dividing this total by the number of amounts. For instance, average sales price is calculated by adding up all sales within an area and dividing this total by the total number of sales within an area. The average is useful for comparing and understanding different areas, market sizes and property types.

### 15.5 Benchmark

An indicator that is calculated in the same way across a larger level (such as national or municipal levels) to compare with smaller areas (such as main places or suburbs). Benchmarks are useful for understanding the performance of housing markets because they provide a consistent means of comparing markets to each other and to larger areas. As example, local markets perceived as having modest appreciation rates may actually be growing quickly when compared with other areas, the metro or the Country as a whole. Benchmarks are key components of the housing performance index, which uses them to determine whether local areas or metros are changing faster than, about the same as, or slower than the metros or the Country.

## 15.6 Bonded Sale

A sales transaction transferring ownership of a property which includes an associated mortgage bond, used by the buyer to purchase that property and which the lender requires to be secured by that property. Bonded sales reflect lender investment in an area and perceptions of market strength and risk levels.

## 15.7 Churn

The total number of homes sold within an area over a one-year period, divided by the number of homes within that area. Similar to turnover, churn represents active market interest, a large pool of eligible buyers and willing sellers and ready access to mortgage financing. In affordable areas, lower churn can reflect reduced housing mobility rather than less marketability, as the result of fewer upward housing options for potential sellers and less access to bond financing for potential buyers. Other indicators (such as bond rates or types, loan to values, equity rates and income) can help differentiate marketability from pent-up market mobility.

## 15.8 Equity

The value of ownership interest in a property, primarily the current **VALUE** of a property minus the current value of any bonds or other claims on the property. Equity value grows as mortgage balances are paid down and property values increase. Equity is realised when a house is sold and is most often used to purchase another property, by increasing the amount available to purchase or lowering monthly mortgage payments (or both). Individual circumstances within neighbourhoods may vary widely but areas with higher aggregate levels of equity represent greater opportunity for upward mobility, both for existing residents who can sell and invest the equity in a new home and for lower-income households able to purchase the existing home.

## 15.9 Equity Growth

The rate at which an owner or investor's equity value has changed over time, calculated by dividing the difference between the values of equity at the beginning and end of the period by the beginning year's equity value. Growth in equity (along with income levels) can be used to determine market potential, as equity significantly boosts the purchasing power of potential buyers. Circumstances that increase equity return include prices that appreciate faster than debt is paid down, less debt, and registrations of new properties with no debt.

## 15.10 Formal Housing Market

A formal housing market is an area where owners sell or otherwise transfer residential properties (which have been registered on the national title and deed registry) to willing buyers who become the legal owners of those properties. Housing markets also include residences that are rented, traded, bartered or otherwise swapped, or legally occupied. This report tracks formal housing markets, as it only uses actual sales reflected on the South African deeds registry. It is estimated that 25 – 50% of all properties in South Africa are not registered.

## 15.11 Housing Continuum

The housing continuum includes all ranges and options of housing, from temporary shelter and informal housing to the highest variety of housing ownership and occupancy models and prices. A continuum implies a continuous, connected marketplace of housing options, which serve the full range of conceivable housing demands as people's lifestyles and life circumstances change over time. In reality, most housing markets are an uneven distribution of housing supply and housing demand.

## 15.12 Leverage

Leverage is the practice of purchasing something by borrowing part of the total cost and it is measured by the degree to which a buyer has borrowed funds to purchase a home. Also called gearing, leverage can be measured in several ways (such as loan to value or equity ratio) but all compare bond amounts to the housing value. Generally, homes or neighbourhoods that are highly leveraged are understood to be higher risk because owners lose less equity if they default. Areas with lower leverage rates are generally considered as being more attractive because lenders have less risk, while owners have more invested and have more potential **EQUITY** to invest in new housing options.

## 15.13 Market Segment

This refers to the aggregate of all properties within a certain Rand value. Properties are grouped by their value to better understand the unique dynamics of these market segments. Values are divided into four bands: values under R250 000; between R250 000 and R500 000; R500 000 to R1.2 million; and over R1.2 million. Generally, properties at or below R500 000 are considered affordable because the estimated monthly housing cost (R15 000 to R16 000) is considered the maximum income eligible for many Government subsidy programmes, above which potential buyers must access the unsubsidised housing market.

## 15.14 Market Share

Market share is the percentage of a market accounted for by a specific entity in that market. Lending market share is determined by the number of all loans in an area or bond portfolio originated or held by a single institution, divided by the total number of bonds in the area or portfolio. Market share can reflect the business model or the prevailing attitudes of particular lenders towards opportunity within certain areas. Lenders track their market share by area and value carefully: too high could mean that they are at greater risk if values decrease, while too low means that the lender may be losing business to competitors.

## 15.15 Rental Index

A score calculated for each suburb, to measure the potential suitability of local areas for rental housing, as measured by a basket of six indicators which are more favourable towards rental housing. A higher score, between 1 and 10, implies a greater likelihood of success. These indicators include density, the number of households currently renting, area median income, the affordability ratio, households to properties ratio and market growth as measured by the housing performance index. The index gives higher weight to aspects more suitable to rental housing, such as density and income, and moderate weight to the current number of households renting (as reported to the census), the local income as a percentage of the municipal median income, affordability (the relationship between local incomes and sales prices) and the number of households in the area to formal housing units on the deeds registry.

## 15.16 Suburb

A neighbourhood (within or beyond the central metropolitan area), with an identifiable name, often socially accepted borders and common characteristics. This report uses suburb boundaries as established and demarcated by StatsSA (and referred to in its documentation as sub-places). In 2011, there were about 22 000 sub-places within South Africa.

## 15.17 Value or Worth

The value of a property as determined by several factors, including recent comparable sales nearby, **CHURN**, lending activity in the area, specific and area property details such as the size, age and amenities. A property's worth is often related to the amount of information available to make an appropriate determination, which is a contributing factor in undervaluing affordable areas where details on formal market activity are inconsistent. This study uses Lightstone's ([www.lightstone.co.za](http://www.lightstone.co.za)) proprietary valuation methodology to determine value.

## 16. Source List

- Africa Mining IQ. [sa]. Coal Mining in South Africa. [O]. Available at <http://www.projects iq.co.za/coal-mining-in-south-africa.htm>. Accessed 09 February 2015
- Kgetlengrivier Local Municipality. Kgetlengrivier Local Municipality 2014/2015 Draft IDP. Kgetlengrivier.







## human settlements

Department:  
Human Settlements  
**REPUBLIC OF SOUTH AFRICA**



An agency of the National  
Department of Human  
Settlements

### **Department of Human Settlement**

240 Justice Mahomed Street  
Govan Mbeki House  
Sunnyside, Pretoria  
0002

Private Bag X645 (Minister)  
Pretoria  
South Africa, 0001

**Phone:** +27 12 421 1311

**Website:** [www.dhs.gov.za](http://www.dhs.gov.za)

### **The Housing Development Agency (HDA)**

6 - 10 Riviera Road  
Riviera Office Park, Block A  
Killarney  
Johannesburg, 2193

PO Box 3209  
Houghton, South Africa, 2041

**Phone:** +27 11 544 1000

**Fax:** +27 11 544 1006/7

**Website:** [www.thehda.co.za](http://www.thehda.co.za)