

CATALYTIC PROJECTS SUMMARY FACT SHEET



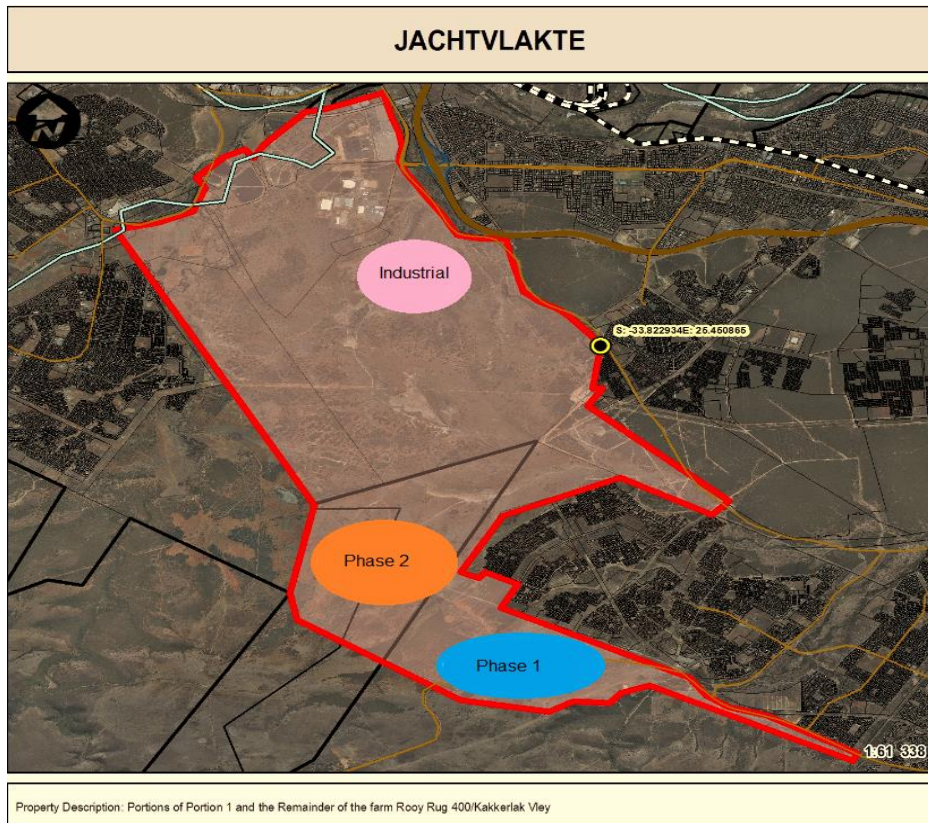
human settlements
Department:
Human Settlements
REPUBLIC OF SOUTH AFRICA



PROJECT NAME

Jachvlakte Sustainable Human Settlement Plan

LOCALITY MAP



LOCALITY

Province: Eastern Cape
District: Nelson Mandela Bay
Local Municipality: Nelson Mandela Bay

LOCALITY PLAN

LEGEND

Rivers	Parent Farm	Coordinates
Major Roads	Farm Portion	
Main Roads	Holding	
Roads	Erven	
Railways	Project Site	

CATALYTIC PROJECTS SUMMARY FACT SHEET			
PROJECT NAME	Jachvlakte Sustainable Human Settlement Plan	LAND CONDITION	Greenfield
DEVELOPER	Nelson Mandela Bay Metropolitan Municipality(NMBM) (IA)		
PROVINCE	Eastern cape	MUNICIPALITY	Nelson Mandela Bay Metropolitan Municipality
PROJECT DESCRIPTION	<p>Jachtlakte is a greenfield development which consists of two phases. The development is surrounded by the townships of Chatty, Despatch, Khayamandi and Kwanobuhle.</p> <p>The project is strategically located in the northern areas of Port Elizabeth. The area will also contribute to employment creation by incorporating light industrial and retail functions within the development area. The development area is identified in the SDF of 2009 for housing development purposes although it will also consist of an industrial area in the future.</p> <p>The housing that will be provided in the area will range from low cost to bonded housing and the development will yield up to 12 000 housing units.</p>		
MAIN ECONOMIC DRIVER(S)	<p>Uitenhage Sub-Regional Economy</p> <ul style="list-style-type: none"> • Manufacturing (30.2%), general government services (18.9%) and finance and business services (16.4%).(Demacon Study 2013) 		
DEVELOPMENT STATUS	Automotive vehicle and Component manufacturing and exports		
NUMBER OF HOUSING OPPORTUNITIES	12 000	PROJECT DURATION	12 - 15 years
PROPOSED ADJUSTED NO. OF HOUSING OPPORTUNITIES		PROPOSED ADJUSTED PROJECT DURATION	
ESTIMATE PROJECT DEVELOPMENT COST	R9 billion	POTENTIAL JOB OPPORTUNITIES	10 710