

CATALYTIC PROJECTS SUMMARY FACT SHEET



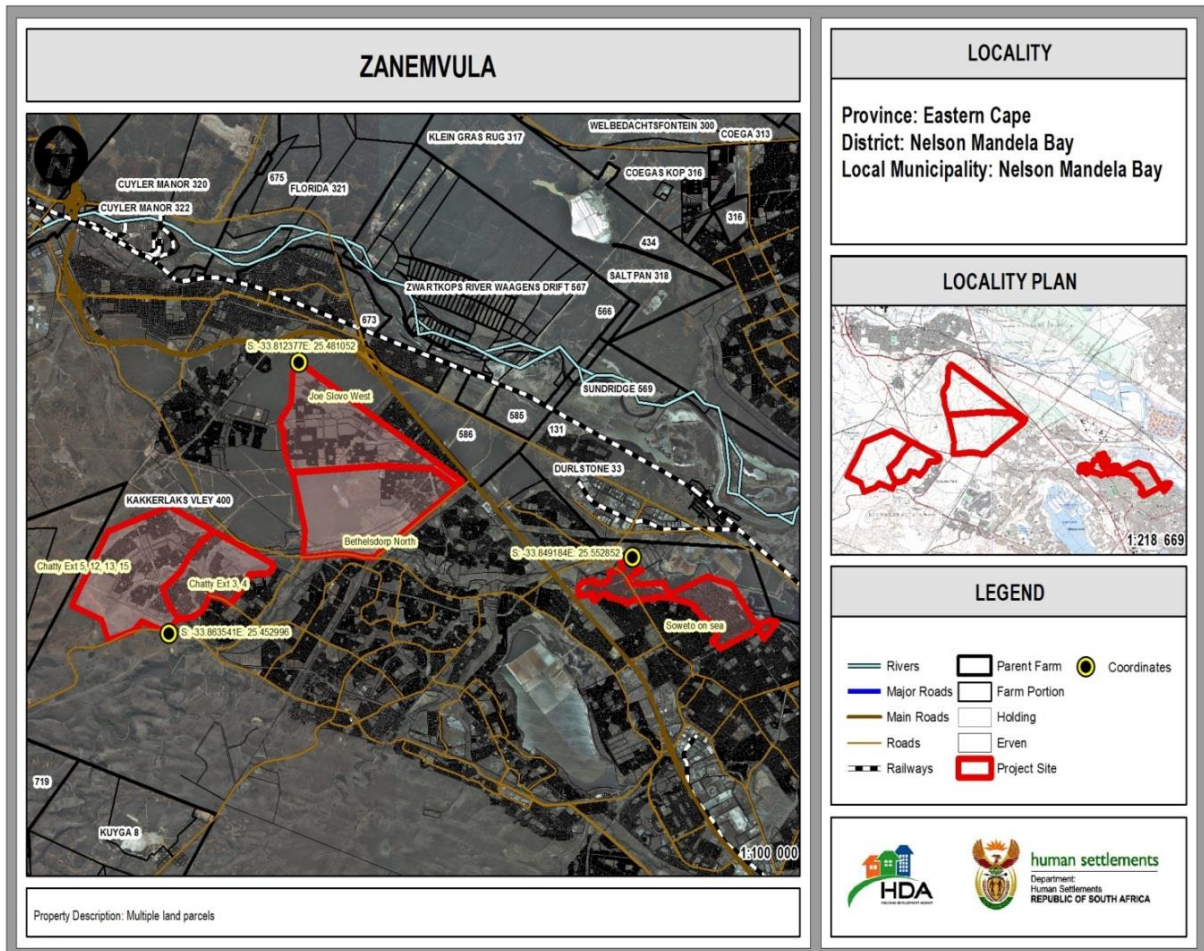
human settlements
 Department:
 Human Settlements
 REPUBLIC OF SOUTH AFRICA



PROJECT NAME

Zanemvula

LOCALITY MAP



CATALYTIC PROJECTS SUMMARY FACT SHEET			
PROJECT NAME	Zanemvula	LAND CONDITION	
DEVELOPER			
PROVINCE	Eastern Cape	MUNICIPALITY	Nelson Mandela Bay Metropolitan Municipality
PROJECT DESCRIPTION	<p>Zanemvula is made up of several programmes in an area stretching from Veeplaas towards Uitenhage and Despatch, approximately 15-20km north west of the PE CBD. It is located within a future development corridor which will improve links between Port Elizabeth and Despatch and Uitenhage. The project intends to implement as a suitable Human Settlement in line with breaking new Ground Strategy of the NDoHS as well as the sustainable community Planning methodology of the NMBMM.</p> <p>The project is an intergovernmental development to fast track the provision of 14500 homes, assisting in reducing the backlog in the NMBMM. Land is owned by the Municipality.</p> <p>Project has potential to become and integrated human settlement development with long term sustainability potentials for the area.</p>		
MAIN ECONOMIC DRIVER(S)	Automotive industry, components of manufacturing and exports as well as the Coega IDZ in terms of job creation.		
DEVELOPMENT STATUS	The land is available and secured for the development of the Zanemvula projects. The 5 development sites are at different stages and phasing plan for these sites was unavailable. Planning readiness could not be determined.		
NUMBER OF HOUSING OPPORTUNITIES	22715	PROJECT DURATION	4 years
PROPOSED ADJUSTED NO. OF HOUSING OPPORTUNITIES		PROPOSED ADJUSTED PROJECT DURATION	
ESTIMATE PROJECT DEVELOPMENT COST	R16 Billion	POTENTIAL JOB OPPORTUNITIES	956 (temporary)