

CATALYTIC PROJECTS SUMMARY FACT SHEET



human settlements
Department:
Human Settlements
REPUBLIC OF SOUTH AFRICA

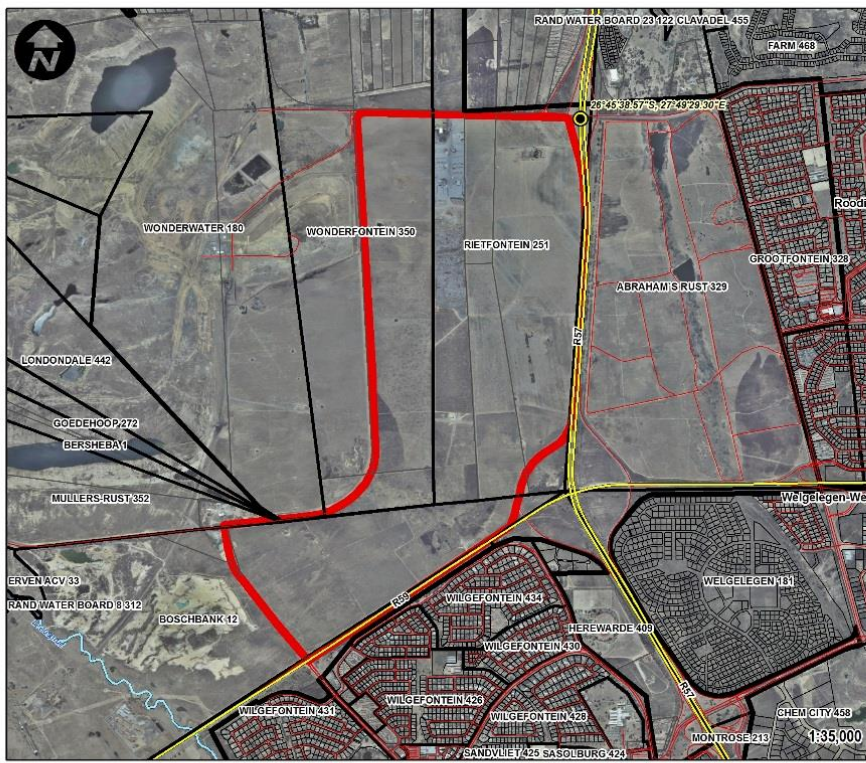


PROJECT NAME

Sasolburg

LOCALITY MAP

SASOLBURG PROPERTIES



Property Description: Portions 8, 10, 43 and 44 of the Farm Rietfontein No. 251, Portion 2 of the Farm Wonderfontein No. 350 and Portion 8 of the Farm Boschbank No. 12

LOCALITY

Province: Free State
District: Fezile Dabi
Municipality: Metsimaholo

LOCALITY PLAN



LEGEND

- Rivers
- Major Roads
- Main Roads
- Roads
- Railways
- Parent Farm
- Farm Portion
- Erf
- Project Site
- Coordinates



human settlements
Department:
Human Settlements
REPUBLIC OF SOUTH AFRICA

CATALYTIC PROJECTS SUMMARY FACT SHEET			
PROJECT NAME	Sasolburg	LAND CONDITION	Greenfield
DEVELOPER	Metsimaholo Local Municipality		
PROVINCE	Free State	MUNICIPALITY	Metsimaholo Local Municipality
PROJECT DESCRIPTION	<p>This is a proposed integrated and mixed use development with a mix of typologies namely BNG/Single Res, CRU, row housing and bonded. It creates integration between Sasolburg and Vanderbijlpark. The project is intended to transform the area into an integrated human settlement. The project is well connected to both Gauteng and the Freestate.</p> <p>Five of the seven land parcels are owned by the Municipality.</p> <p>Land issues have been resolved</p> <p>The entire properties were acquired by the department and transferred to municipality. (Ask Justice)</p> <p>Land ownership – Remainder Wonderfontein is not part of the land area therefore there are only 5 (6) portions of land</p>		
MAIN ECONOMIC DRIVER(S)	<p>Sasolburg refinery</p> <p>Tourism with the vaal dam</p> <p>Government</p> <p>Second biggest town in the province</p>		
DEVELOPMENT STATUS	<p>The Urban Design has been concluded and presented to EXCO on 2nd November. The concept was approved. Ready to start with the amendment of the layout but this has not started yet. Draft terms of reference are ready.</p>		
NUMBER OF HOUSING OPPORTUNITIES	<p>10 000</p> <p>This number could change with amended plan (concept proposal) - Will provide an estimate.</p>	PROJECT DURATION	5-10 years
PROPOSED ADJUSTED NO. OF HOUSING OPPORTUNITIES		PROPOSED ADJUSTED PROJECT DURATION	
ESTIMATE PROJECT DEVELOPMENT COST	R3.7 billion (need to clarify this number)	POTENTIAL JOB OPPORTUNITIES	Temporary = 9368