

CATALYTIC PROJECTS SUMMARY FACT SHEET



human settlements
Department:
Human Settlements
REPUBLIC OF SOUTH AFRICA

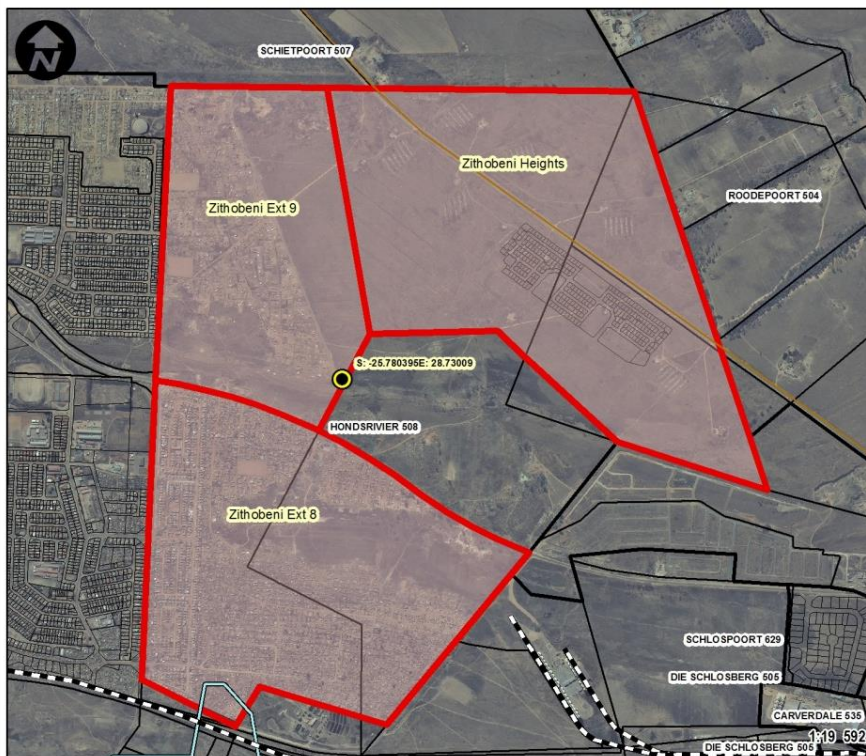


PROJECT NAME

Zithobeni Ext. 8 & 9 & Zithobeni Heights

LOCALITY MAP

ZITHOBENI EXT 8, 9 AND ZITHOBENI HEIGHTS



Property Description: Zithobeni Ext 8: Part of the Remainder of Portion 11 and Part of the Remainder of the Farm Hondsrievier No 508-JR, Gauteng Province
Zithobeni Ext 9: Portion 207 of the Farm Hondsrievier No 508-JR, Gauteng Province
Zithobeni Heights: Portion 28 of the Farm Hondsrievier No 508-JR, Gauteng Province. Portions 100, 101, 102 of Zithobeni (TBC)

LOCALITY

Province: Gauteng
District: Tshwane
Local Municipality: Tshwane

LOCALITY PLAN



LEGEND

- Rivers
- Major Roads
- Main Roads
- Roads
- Railways
- Parent Farm
- Farm Portion
- Holding
- Erven
- Project Site
- Coordinates



human settlements
Department:
Human Settlements
REPUBLIC OF SOUTH AFRICA

CATALYTIC PROJECTS SUMMARY FACT SHEET			
PROJECT NAME	Zithobeni Ext. 8 & 9 Zithobeni Heights	LAND CONDITION	Greenfield/Brownfield/Infill
DEVELOPER	City of Tshwane/PDOHS		
PROVINCE	Gauteng	MUNICIPALITY	City of Tshwane MM
PROJECT DESCRIPTION	<p>The development areas are located to the east and north of the existing Zithobeni Township, approximately 3 km north-west of Bronkhorstspuit about 67.3 km east of the Pretoria CBD, in CoT Region 7.</p> <p>Combined the Zithobeni developments proposes to deliver approximately 7,742 housing units - distributed as 1,899 units, 1,918 units and 3,925 units respectively for Zithobeni Extension 8, Zithobeni Extension 9, and Zithobeni Heights.</p>		
MAIN ECONOMIC DRIVER(S)	Manufacturing and financial / business services are the main economic drivers within the larger Bronkhorstspuit area.		
DEVELOPMENT STATUS	Under implementation – project phased due to budgetary constraints		
NUMBER OF HOUSING OPPORTUNITIES	7 742	PROJECT DURATION	10 years
PROPOSED ADJUSTED NO. OF HOUSING OPPORTUNITIES	TBC	PROPOSED ADJUSTED PROJECT DURATION	10 - 12 years
ESTIMATE PROJECT DEVELOPMENT COST	R 2 822 450.00	POTENTIAL JOB OPPORTUNITIES	± 3,176