

# CATALYTIC PROJECTS SUMMARY FACT SHEET



human settlements  
Department:  
Human Settlements  
REPUBLIC OF SOUTH AFRICA



PROJECT NAME

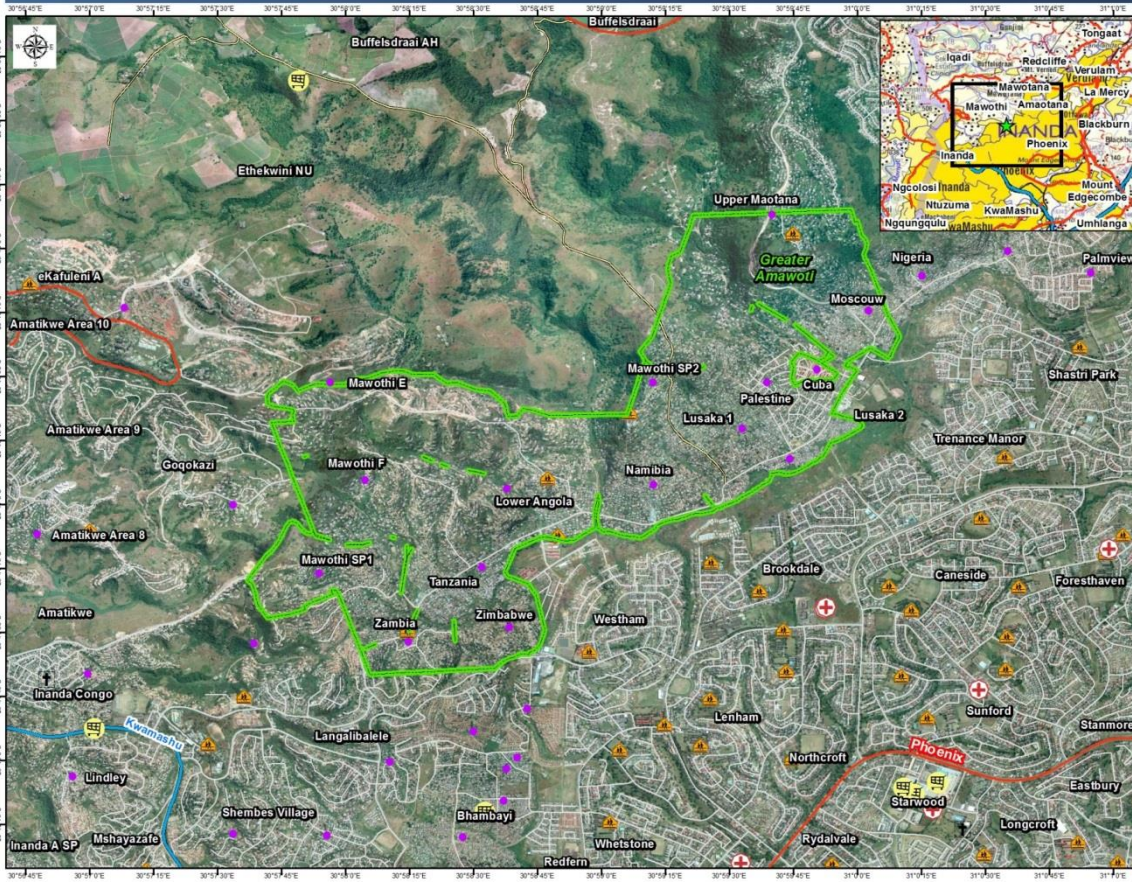
Greater Amaoti

LOCALITY MAP

## Greater Amaoti Integrated Housing Development, eThekweni MM: KZN

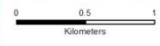


land@thehda.co.za



### Legend

- Informal Settlements 2011
- Project area
- Points of Interest**
- Educational Inst
- Medical Facilities
- Places of Worship
- Shopping Facilities
- Transport Infrastructure**
- Main roads
- Highways
- Streets
- Secondary roads



<b>CATALYTIC PROJECTS SUMMARY FACT SHEET</b>			
<b>PROJECT NAME</b>	Greater Amaoti	<b>LAND CONDITION</b>	Brownfield
<b>DEVELOPER</b>	eThekwini Metro Municipality		
<b>PROVINCE</b>	Kwazulu-Natal	<b>MUNICIPALITY</b>	eThekwini Metro Municipality
<b>PROJECT DESCRIPTION</b>	<p>Greater Amaoti is located within the INK (Inanda, Ntuzuma, KwaMashu) area, approximately 20km north of Durban. It comprises a mix of residential townships and informal settlements. Greater Amaoti, which is located within Inanda, is one of the largest informal settlements in eThekwini and South Africa, comprising 12 sub-areas and is one of a series of communities forming the Greater Inanda Area. There are approximately 20,000 households residing in informal structures. Seventy percent of Durban's street children originate from the area. The area is also characterised by low economic activity, inadequate infrastructure, and high levels of unemployment, HIV/Aids, poverty and crime.</p> <p>The Inanda area is of great importance in the history of Durban and South Africa, with events of a global significance having taken place here and it remains a vibrant hub of cultural and spiritual activity. The home of ANC founder and first president John Dube, where Nelson Mandela voted in SA's first democratic election is in this area. Also included are the historical landmarks of Mahatma Gandhi and the sacred village of Ebuhleni and the tombs of prophets, all of which are part of a well visited tourist route.</p> <p>The greater Inanda area forms part of a larger sub-metro catchment including Inanda, Ntuzuma, KwaMashu and Phoenix. While KwaMashu, Ntuzuma and Phoenix were previously established as townships to accommodate low to medium income housing, much of the Inanda area consisted of a "released area" being mostly in the ownership of a large number of individuals. Consequently the development of Inanda occurred largely on an informal basis with few formal facilities and services.</p>		
<b>MAIN ECONOMIC DRIVER(S)</b>	The area is in close proximity to the KwaMashu and Bridge City Town Centres, the Dube Tradeport and King Shaka Airport as well as the Tongaat Hulett developments		
<b>DEVELOPMENT STATUS</b>	Planning and basic services (Amaoti Cuba is at construction phase)		
<b>NUMBER OF HOUSING OPPORTUNITIES</b>	32 000	<b>PROJECT DURATION</b>	10 -15 years
<b>PROPOSED ADJUSTED NO. OF HOUSING OPPORTUNITIES</b>		<b>PROPOSED ADJUSTED PROJECT DURATION</b>	15 – 20 years
<b>ESTIMATE PROJECT DEVELOPMENT COST</b>	R12 Billion	<b>POTENTIAL JOB OPPORTUNITIES</b>	30 400