

CATALYTIC PROJECTS SUMMARY FACT SHEET



human settlements
Department:
Human Settlements
REPUBLIC OF SOUTH AFRICA



PROJECT NAME Waterstone Development (Empangeni)

LOCALITY MAP

Waterstone, Empangeni, uMhlatuze LM : KZN

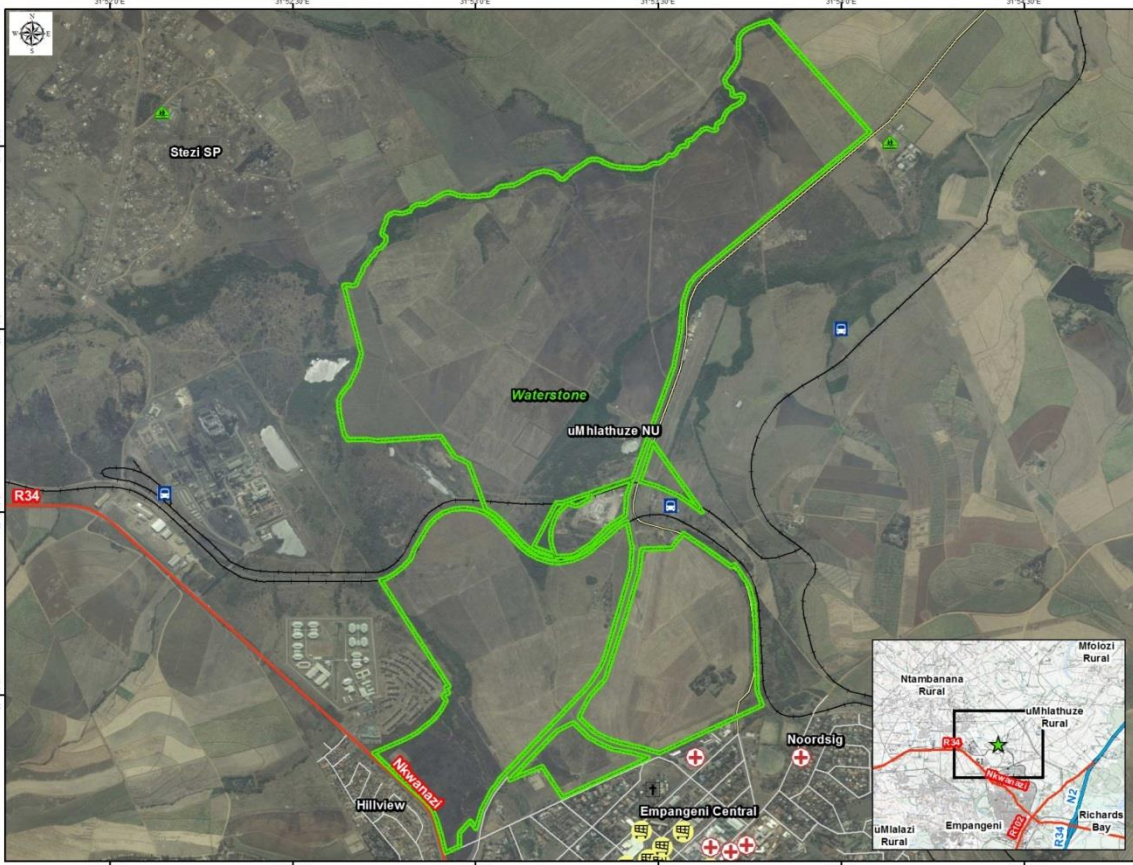


land@thehda.co.za

Legend

- Project area
- Points of Interest**
- Educational Inst
- Medical Facilities
- Places of Worship
- Shopping Facilities
- Transportation
- Transport Infrastructure**
- Main roads
- Streets
- Railway
- Secondary roads

0 380 750
Meters



CATALYTIC PROJECTS SUMMARY FACT SHEET			
PROJECT NAME	Waterstone Development	LAND CONDITION	Greenfield
DEVELOPER	uMhlathuze Local Municipality		
PROVINCE	Local Municipality	MUNICIPALITY	uMhlathuze Local Municipality
PROJECT DESCRIPTION	<p>The project is located in close proximity to the Empangeni CBD. The project comprises of mixed residential units and tenure options and acts as a human settlement response to the expanding Empangeni CBD and surrounding urban node. It is also caters residential and commercial catalyst for the residential neighbourhoods surrounding Richards Bay industrial area.</p> <p>The land has been acquired by the uMlatuze Municipality. It is strategically located between the P230 & P425 roads</p>		
MAIN ECONOMIC DRIVER(S)	Richards Bay Coal Terminal and Port operations and IDZ . The area is also the a governmental administrative sub region. The Richards Bay Minerals are based in close proximity as is the smelter. The area has a small commercial fishing and agricultural component and tourism opportunities and a large prison complex		
DEVELOPMENT STATUS	Planning is complete.		
NUMBER OF HOUSING OPPORTUNITIES	10 000	PROJECT DURATION	11 years
PROPOSED ADJUSTED NO. OF HOUSING OPPORTUNITIES		PROPOSED ADJUSTED PROJECT DURATION	25
ESTIMATE PROJECT DEVELOPMENT COST	R4.6 billion	POTENTIAL JOB OPPORTUNITIES	11 625