

# CATALYTIC PROJECTS SUMMARY FACT SHEET



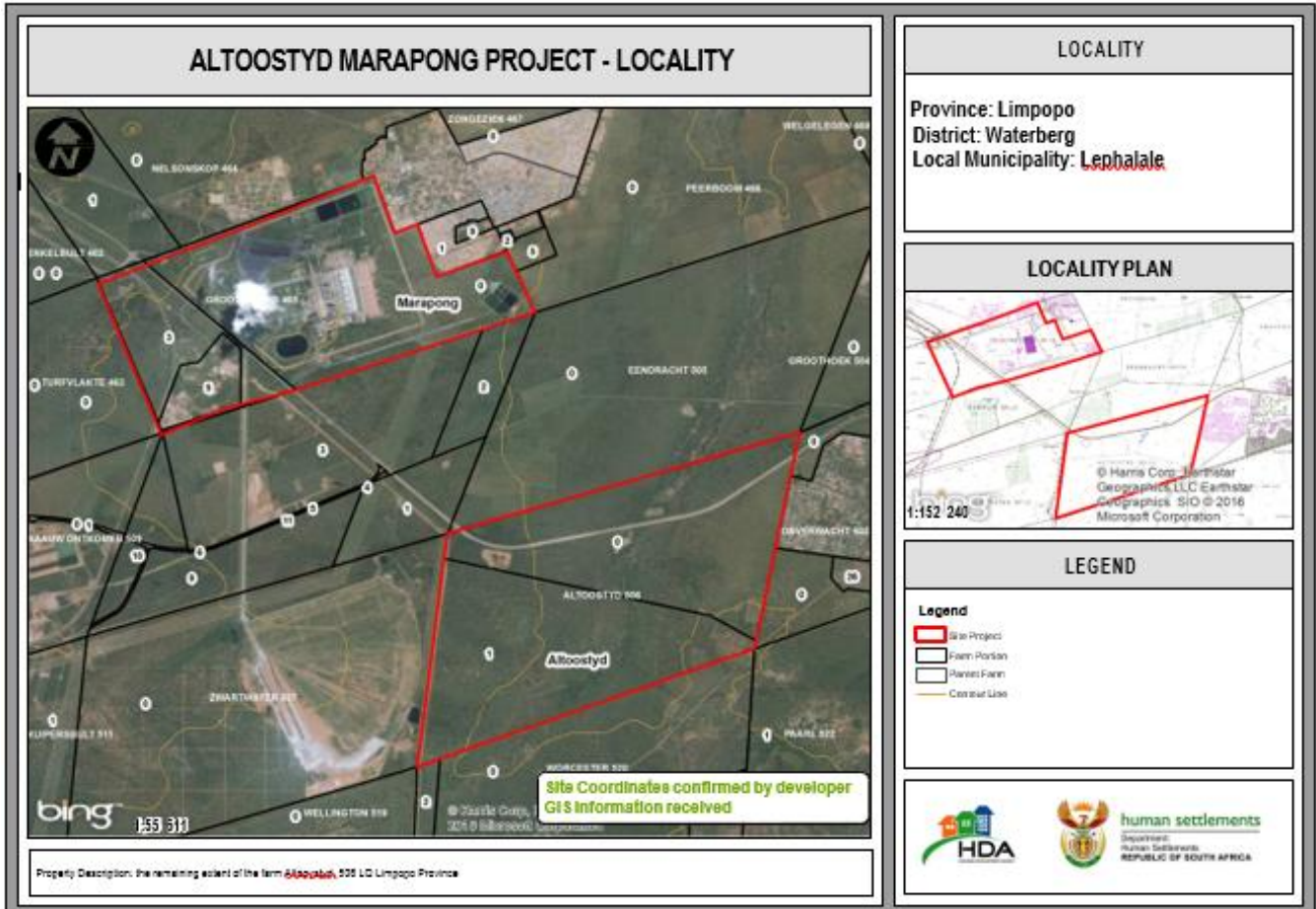
human settlements  
Department:  
Human Settlements  
REPUBLIC OF SOUTH AFRICA



## PROJECT NAME

Lephalale Altoostyd/Marapong Integrated Development Project

## LOCALITY MAP



<b>CATALYTIC PROJECTS SUMMARY FACT SHEET</b>			
<b>PROJECT NAME</b>	Lephalale Altoostyd/Marapong Integrated Development	<b>LAND CONDITION</b>	Greenfield/Brownfield/Infill
<b>DEVELOPER</b>	COGHSTA		
<b>PROVINCE</b>	Limpopo	<b>MUNICIPALITY</b>	Lephalale Local Municipality
<b>PROJECT DESCRIPTION</b>	<p>The Altoostyd/Marapong Integrated Development Project has been identified as a priority project for the Limpopo Government. The Altoostyd farm was acquired by the provincial government for the purpose of establishing a new integrated human settlement that provides a full mix of housing opportunities to all income groups, as well as required business, light industrial and social uses. The objective of the municipality is that the Altoostyd Project should preferably target infill developments in areas determined as priority development areas. Marapong CRU aims to provide high density community rental units including a Community Centre and 8 play areas on land adjacent to Matimba Power Station.</p> <p>Development of subsidised housing:</p> <ul style="list-style-type: none"> <li>• 4 908 single residential units</li> <li>• 26 multiple residential units</li> </ul> <p>Additional developments:</p> <ul style="list-style-type: none"> <li>• 8 education units</li> <li>• 12 business units</li> <li>• 41 light industries units</li> <li>• 12 institutional units</li> </ul>		
<b>MAIN ECONOMIC DRIVER(S)</b>	<ul style="list-style-type: none"> <li>• Expansion of coal mines on the Waterberg Coal Fields.</li> <li>• Energy generating industries, including Matimba and Medupi Power Stations</li> <li>• Ancillary industrial and commercial activities resulting from the mining activities.</li> </ul>		
<b>DEVELOPMENT STATUS</b>	The project is in the implementation phase.		
<b>NUMBER OF HOUSING OPPORTUNITIES</b>	5214 (estimated 4700 for Altoostyd)	<b>PROJECT DURATION</b>	Marapong CRU: 2 years Altoostyd: 8 years
<b>PROPOSED ADJUSTED NO. OF HOUSING OPPORTUNITIES</b>	TBC	<b>PROPOSED ADJUSTED PROJECT DURATION</b>	TBC
<b>ESTIMATE PROJECT DEVELOPMENT COST</b>	Marapong CRU: R217,709,453 Altoostyd: R 900,000,000 (estimated)	<b>POTENTIAL JOB OPPORTUNITIES</b>	6890