

CATALYTIC PROJECTS SUMMARY FACT SHEET



human settlements
Department:
Human Settlements
REPUBLIC OF SOUTH AFRICA

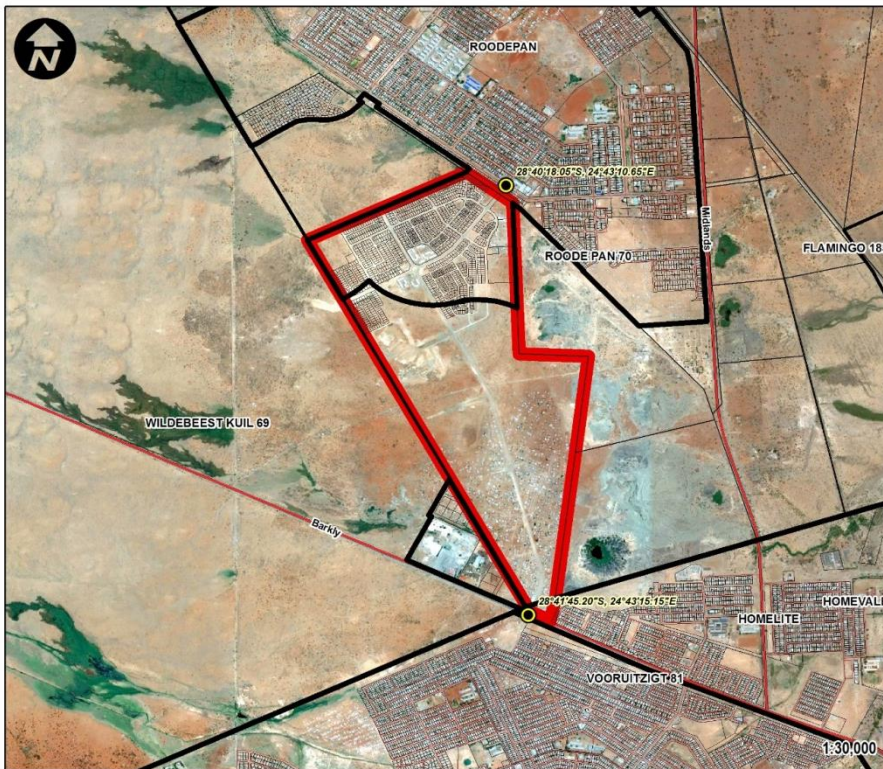


PROJECT NAME

Lerato Park

LOCALITY MAP

LERATO PARK INTEGRATED HOUSING DEVELOPMENT

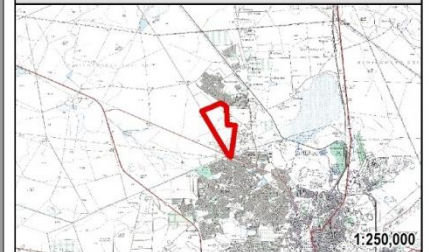


Property Description: Remainder of Portion 59 of the Farm Roodepan No. 70 (a portion of Portion 4) and a Portion of the Remainder of Portion 1 of the Farm Vooruitzich No. 81. (to be known as Lerato Park)

LOCALITY

Province: Northern Cape
District: Frances Baard
Local Municipality: Sol Plaatje

LOCALITY PLAN



LEGEND

- | | | |
|-------------|--------------|--------------|
| Rivers | Parent Farm | Project Site |
| Major Roads | Farm Portion | Coordinates |
| Main Roads | Holding | |
| Roads | Township | |
| Railways | Erf | |



human settlements
Department:
Human Settlements
REPUBLIC OF SOUTH AFRICA

CATALYTIC PROJECTS SUMMARY FACT SHEET			
PROJECT NAME	Lerato Park	LAND CONDITION	Greenfield
DEVELOPER	Bigen Africa		
PROVINCE	Northern Cape	MUNICIPALITY	Sol Plaatjie Municipality
PROJECT DESCRIPTION	<ul style="list-style-type: none"> Lerato Park was piloted as far back as 2005 as a Presidential lead project in terms of the informal Settlements Upgrading Programme and became a National Priority Project to be developed according to BNG principles from 2008. It is one of the largest sprawling informal settlements in the area with an estimated 3 500 households. It is located between Galeshewe and Roodepan to the north of Kimberley. The vision for the Lerato Park Integrated Housing Development Project is to transform the current sprawling informal settlement into a quality integrated suburb that could achieve sustainable development outcomes for the community as a whole. The existing informal settlement is to be transformed into a mixed income housing development of 4 651 housing units; consisting of a combination of subsidised, bonded, rental and institutional housing units, which, in combination with social amenities and provision for commercial opportunities, will form an integrated living space. Lerato Park is planned to be developed in nine (9) phases. Phases 1 and 2 are under construction, and include the new Phase 3, which is the CRU units. 491 subsidised units have been constructed and consist of free-standing houses, semi-detached and row houses 		
MAIN ECONOMIC DRIVER(S)	<ul style="list-style-type: none"> Mining Regional service centre. Other uses: retail, mixed use, community facilities 		
DEVELOPMENT STATUS	Planning, services and top structures in process		
NUMBER OF HOUSING OPPORTUNITIES	4 651	PROJECT DURATION	10 years
PROPOSED ADJUSTED NO. OF HOUSING OPPORTUNITIES		PROPOSED ADJUSTED PROJECT DURATION	
ESTIMATE PROJECT DEVELOPMENT COST	R1.27 billion	POTENTIAL JOB OPPORTUNITIES	3 178