

CATALYTIC PROJECTS SUMMARY FACT SHEET



human settlements
 Department:
 Human Settlements
 REPUBLIC OF SOUTH AFRICA

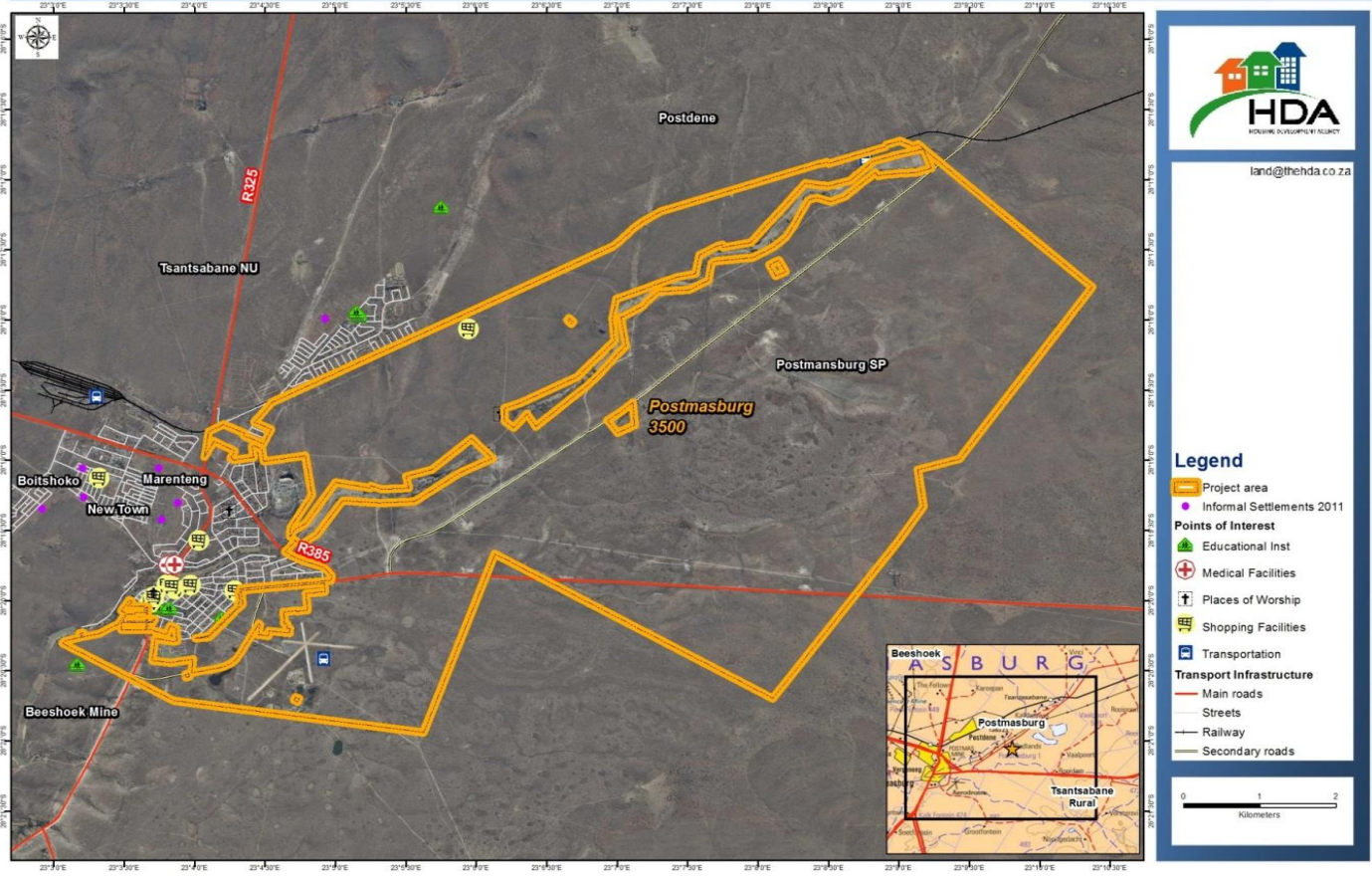


PROJECT NAME

Postmasburg Integrated Housing Development Project

LOCALITY MAP

Postmasburg 3500, Postmasburg, Tsantsabane LM : NC



CATALYTIC PROJECTS SUMMARY FACT SHEET			
PROJECT NAME	Postmasburg Integrated Housing Development Project	LAND CONDITION	Greenfield
DEVELOPER	Bigen Africa		
PROVINCE	Northern Cape	MUNICIPALITY	Tsantsabane Local Municipality
PROJECT DESCRIPTION	<p>Postmansburg is a mining town that experienced an increase in economic activity associated with mining, manufacturing and agriculture. It resulted in an increase in demand for human settlements and an increase in informal settlements in the town, as well as on its outskirts.</p> <p>The vision of the Postmansburg project is to transform the current sprawling informal settlements into a quality integrated suburb with integrated living spaces. The project will be developed as an Upgrading of Informal Settlement Programme (UISP) project for planning and installation of services, but the project also intends to capture the principles of an Integrated Residential Development Programme (IRDP) with the development of greenfields land owned by the municipality. Four options of greenfields development have been identified.</p> <p>The intention is to cater for an extended market, ranging from fully subsidised housing to partly subsidised units, rental, institutional and bonded housing options and associated social amenities by formalising the existing informal settlement areas and developing new greenfields areas for those areas. These areas cannot be formalised due to land constraints and/ or geotechnical limitations. The targeted informal settlement areas include the informal settlement areas identified by the NUSP programme as well as new areas that came into existence after the original NUSP report was compiled and was identified by the municipality to be part of the project.</p>		
MAIN ECONOMIC DRIVER(S)	<ul style="list-style-type: none"> • Mining and manufacturing. • Other uses: commercial and social. 		
DEVELOPMENT STATUS	Concept planning is complete and detailed township establishment is underway		
NUMBER OF HOUSING OPPORTUNITIES	3 500	PROJECT DURATION	5 years
PROPOSED ADJUSTED NO. OF HOUSING OPPORTUNITIES	same	PROPOSED ADJUSTED PROJECT DURATION	10 years
ESTIMATE PROJECT DEVELOPMENT COST	R1.64 billion	POTENTIAL JOB OPPORTUNITIES	4 119