

CATALYTIC PROJECTS SUMMARY FACT SHEET



human settlements
Department:
Human Settlements
REPUBLIC OF SOUTH AFRICA

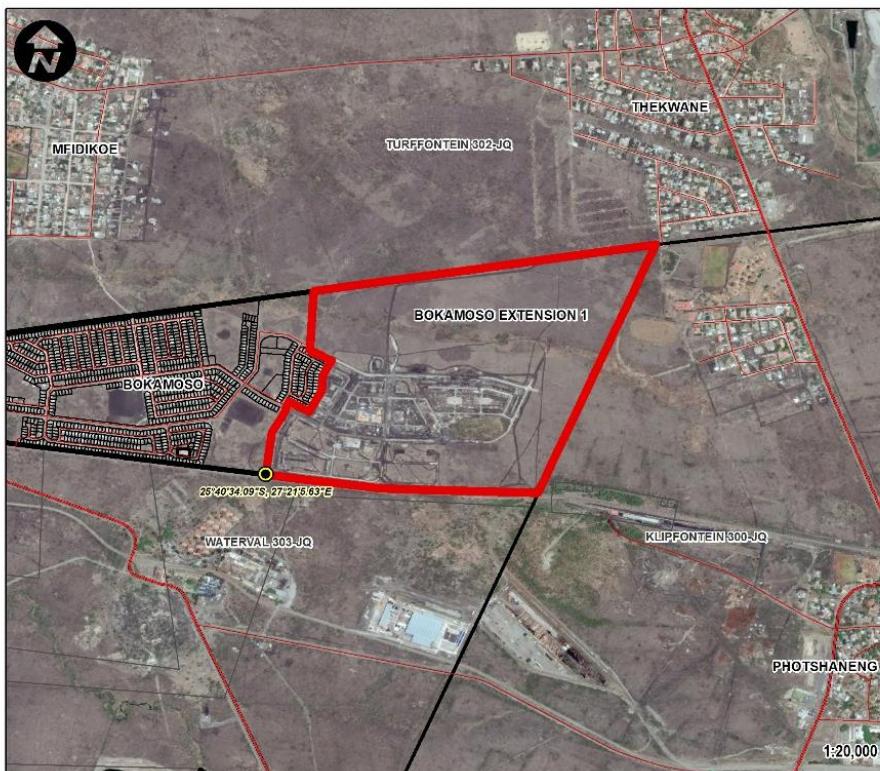


PROJECT NAME

Bokamoso Ext 1

LOCALITY MAP

BOKAMOSO EXTENSION 1 HOUSING PROJECT (BHP)



Property Description: Bokamoso Extension 1
Township opened on Portion 61 (a Portion of Portion 52) of the Farm Waterval 303-JQ

LOCALITY

Province: North West
District: Bojanala Platinum
Local Municipality: Rustenburg

LOCALITY PLAN



LEGEND

	Rivers		Parent Farm		Project Site
	Major Roads		Farm Portion		Coordinates
	Main Roads		Holding		Township
	Roads		Erf		
	Railways				



human settlements
Department:
Human Settlements
REPUBLIC OF SOUTH AFRICA

CATALYTIC PROJECTS SUMMARY FACT SHEET			
PROJECT NAME	Bokamoso Extension 1 Housing development / Thusanang	LAND CONDITION	Greenfield
DEVELOPER	North West Province		
PROVINCE	North West Province	MUNICIPALITY	Rustenburg Local Municipality
PROJECT DESCRIPTION	<p>The Project is located south east of Rustenburg. The land was donated by Rustenburg Platinum Mines to the Municipality (as part of the Thusanang Project). The project intends to provide approximately 4000 (3880) low cost housing opportunities along with social amenities. The beneficiaries will be from 3 or more informal settlements in the area.</p> <p>The Thusanang project, initiated by Anglo American Platinum (AAP), intended to deliver more than 20 000 housing units across six mining villages in the Rustenburg Local Municipality. Bokamosa Ext 1 was one of the first areas identified for the Thusanang Pilot Housing Project. Initially 1300 RDP stands were planned to be developed on Bokamoso Proper but owing to restrictions of air quality from the smelter only 950 low cost units were developed. AAP located 200ha of land 10km south-east of Rustenburg which would be donated to the Municipality for low cost housing.</p> <p>The housing typology is restricted to semi-detached houses only. The project has a 5 phased approach with 15 of the houses already constructed. The internal services for Phase 2 and 3 are already under construction. There are no bonded units only semi-detached units and CRU and walk-ups cannot be developed on the land owing to poor soil conditions.</p>		
MAIN ECONOMIC DRIVER(S)	Platinum Mine		
DEVELOPMENT STATUS	Phase 1 is complete with 15 top structures and Phase 2&3 are currently receiving internal services.		
NUMBER OF HOUSING OPPORTUNITIES	3880	PROJECT DURATION	5 years
PROPOSED ADJUSTED NO. OF HOUSING OPPORTUNITIES		PROPOSED ADJUSTED PROJECT DURATION	
ESTIMATE PROJECT DEVELOPMENT COST	R 1, 078,036, 760	POTENTIAL JOB OPPORTUNITIES	2 695 (Temporary)