

# CATALYTIC PROJECTS SUMMARY FACT SHEET



human settlements  
Department:  
Human Settlements  
REPUBLIC OF SOUTH AFRICA



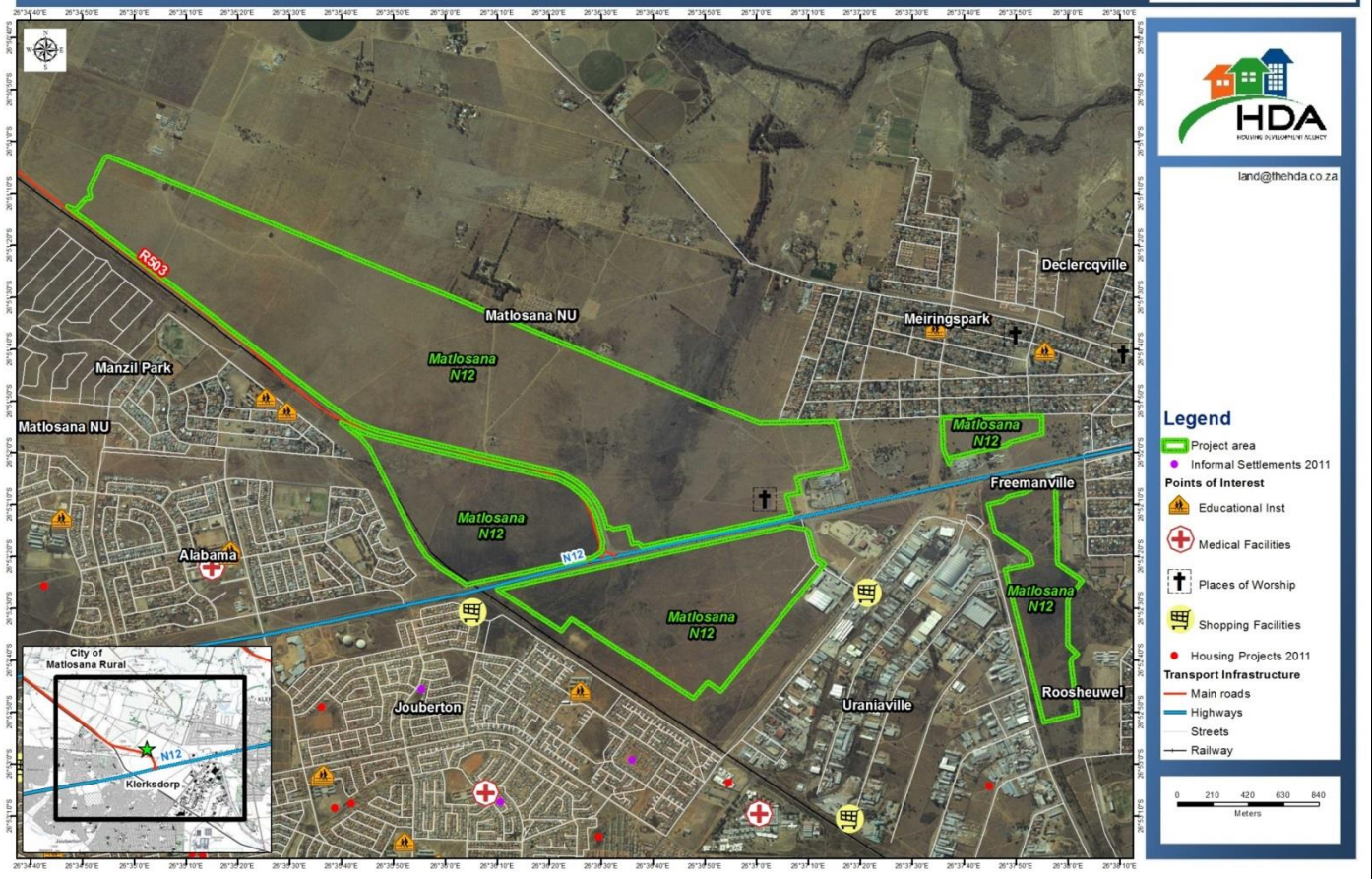
**PROJECT NAME** Matlosana N12 West Development

## LOCALITY MAP

### Matlosana N12 (West) Development, City of Matlosana LM : NW



land@thehda.co.za



<b>CATALYTIC PROJECTS SUMMARY FACT SHEET</b>			
<b>PROJECT NAME</b>	Matlosana N12 West Development	<b>LAND CONDITION</b>	Greenfield
<b>DEVELOPER</b>	MXN Developments (Through letter of intent)		
<b>PROVINCE</b>	North West	<b>MUNICIPALITY</b>	City of Matlosana Local Municipality
<b>PROJECT DESCRIPTION</b>	<p>The Matlosana N12 Integrated Development is located along the N12 in Klerksdorp. The project is meant to address the housing demand along with the neighbouring informal settlements in the area of Klerksdorp. The development will intends to provide housing options, job opportunities and poverty alleviation.</p> <p>The project site areas are well located ensuring spatial integration with Klerksdorp and existing surrounding townships.</p> <p>The development is mixed use, providing housing options alongside commercial facilities, education facilities and social amenities.</p> <p>The project is adjacent to the Rio Casino.</p>		
<b>MAIN ECONOMIC DRIVER(S)</b>	Mining and Agriculture		
<b>DEVELOPMENT STATUS</b>	Vacant land ready to build		
<b>NUMBER OF HOUSING OPPORTUNITIES</b>	9515	<b>PROJECT DURATION</b>	7 years
<b>PROPOSED ADJUSTED NO. OF HOUSING OPPORTUNITIES</b>	Same	<b>PROPOSED ADJUSTED PROJECT DURATION</b>	TBC on adjusted business Plan
<b>ESTIMATE PROJECT DEVELOPMENT COST</b>	R8 392 914 000	<b>POTENTIAL JOB OPPORTUNITIES</b>	20 982 (Temporary Jobs)