

CATALYTIC PROJECTS SUMMARY FACT SHEET



human settlements
Department:
Human Settlements
REPUBLIC OF SOUTH AFRICA

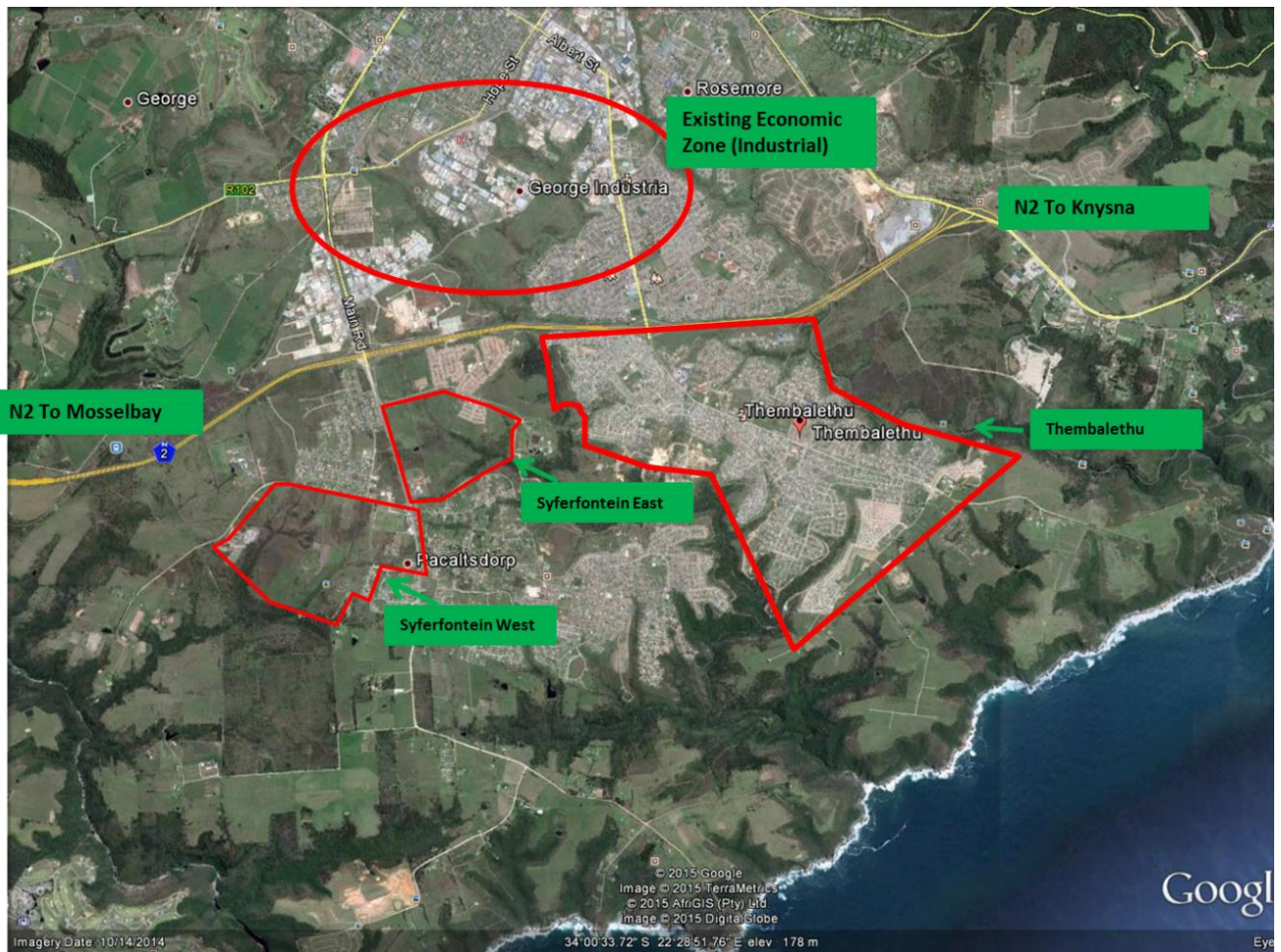


PROJECT NAME

Syferfontein East and West

LOCALITY MAP

Syferfontein East, George, Western Cape



CATALYTIC PROJECTS SUMMARY FACT SHEET			
PROJECT NAME	Syferfontein East and West	LAND CONDITION	Greenfield
DEVELOPER	Western Cape Province		
PROVINCE	Western Cape	MUNICIPALITY	George
PROJECT DESCRIPTION	<p>The intention of project is to develop mixed use integrated human settlement along public transport networks. Establish effective partnerships with local authority, government departments, private sector, Ngo's and communities.</p> <p>The projects objectives are aligned to the NSDP principles. George has been identified as one of the 26 areas of national economic significance and growth nodes for the western cape PSDF. There is a need to integrate communities spatially in George.</p> <p>Syferfontein East (ERF 325) is located on the eastern side of Pacaltsdorp. The property is owned by the municipality. The WULA approval and environmental assessment outstanding. Funding required for bulk is R94 million.</p> <p>Syferfontein West (ERF 325) is located on the western side of Pacaltsdorp. The project is still in planning stages and requires R69million for bulks.</p>		
MAIN ECONOMIC DRIVER(S)	George CBD		
DEVELOPMENT STATUS	Still in planning stage		
NUMBER OF HOUSING OPPORTUNITIES	6975	PROJECT DURATION	5 years
PROPOSED ADJUSTED NO. OF HOUSING OPPORTUNITIES	same	PROPOSED ADJUSTED PROJECT DURATION	15 years
ESTIMATE PROJECT DEVELOPMENT COST	Missing Information	POTENTIAL JOB OPPORTUNITIES	