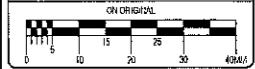


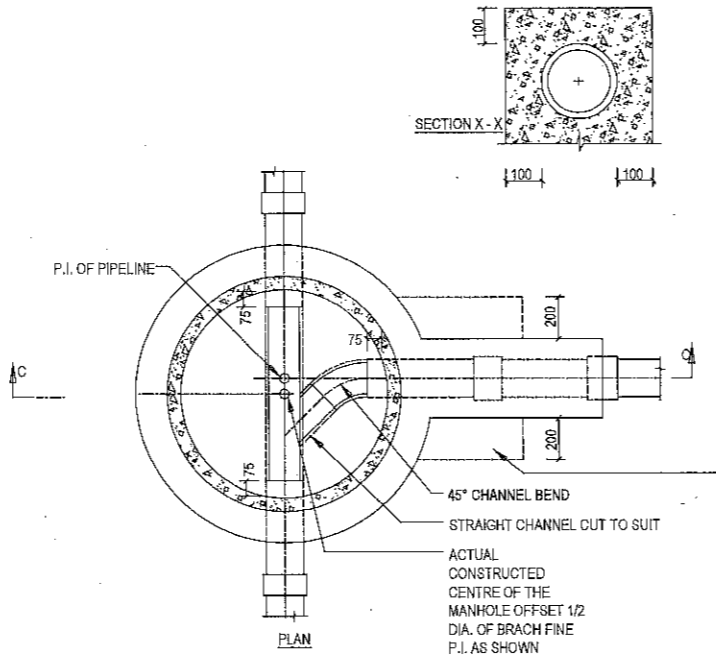
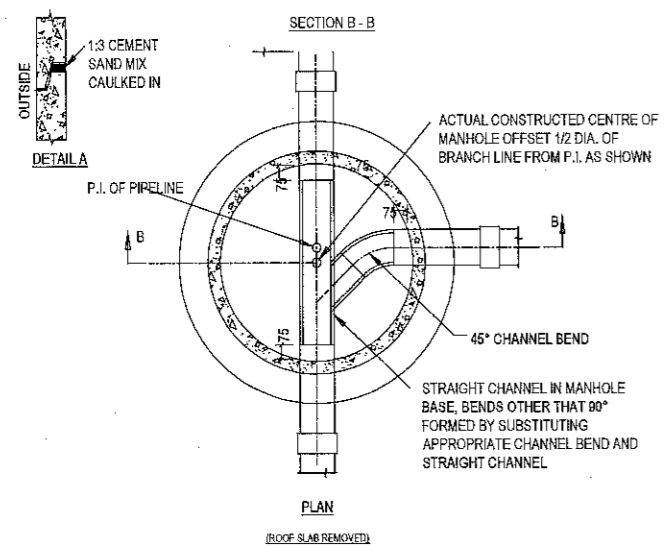
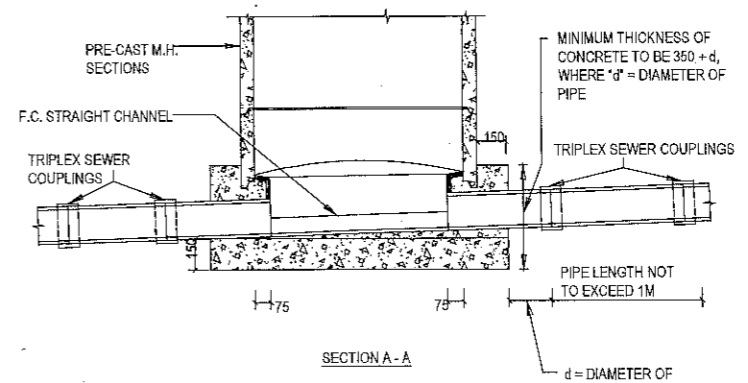
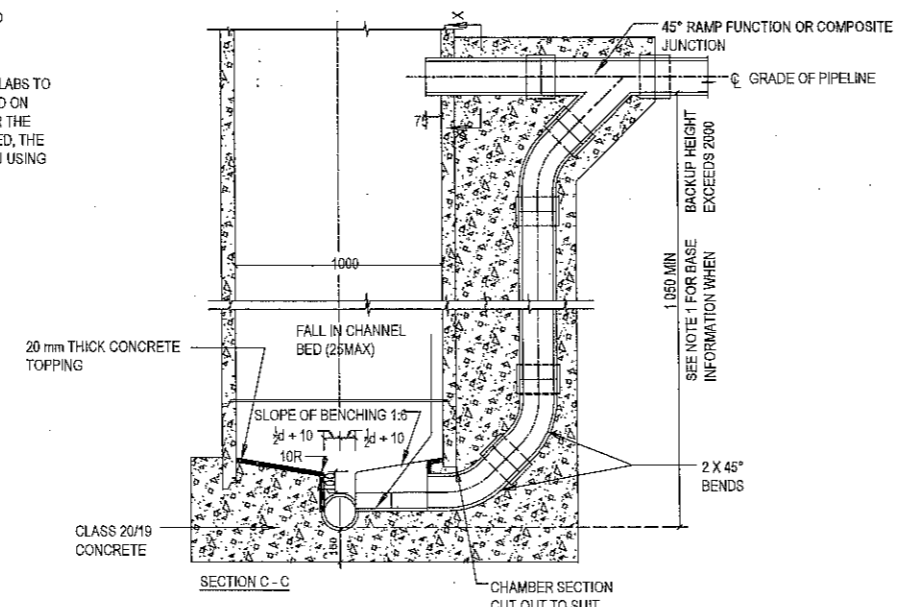
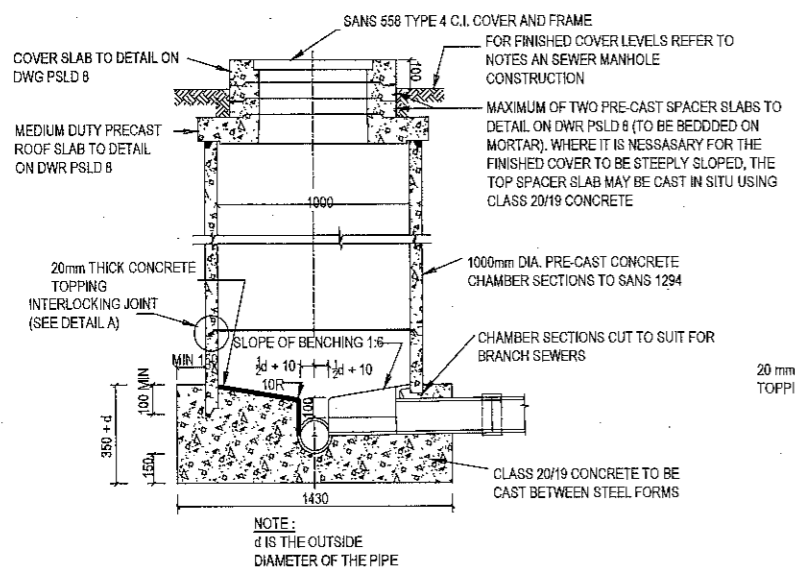
ALL DIMENSIONS AND LEVELS ARE TO BE VERIFIED ON SITE BY THE CONTRACTOR BEFORE COMMENCING ANY WORK.

This document and all the information therein remains the property of ARCUS GIBB (Pty) Ltd. and may not be copied, reproduced or transmitted in any form or by any means, electronic or mechanical, including photocopying, recording, or by any information storage and retrieval system, without the prior written permission of ARCUS GIBB (Pty) Ltd. This document shall not be used in any circumstances other than those for which it was originally prepared and for which ARCUS GIBB (Pty) Ltd. was commissioned, or defined on this document. Refer to the contract for full terms and conditions.

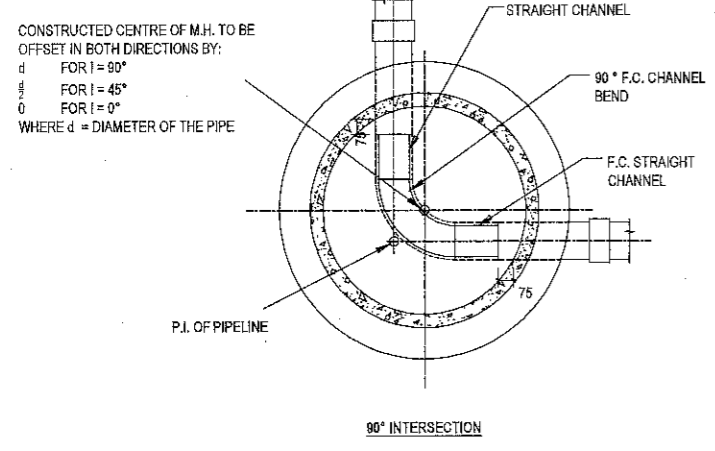
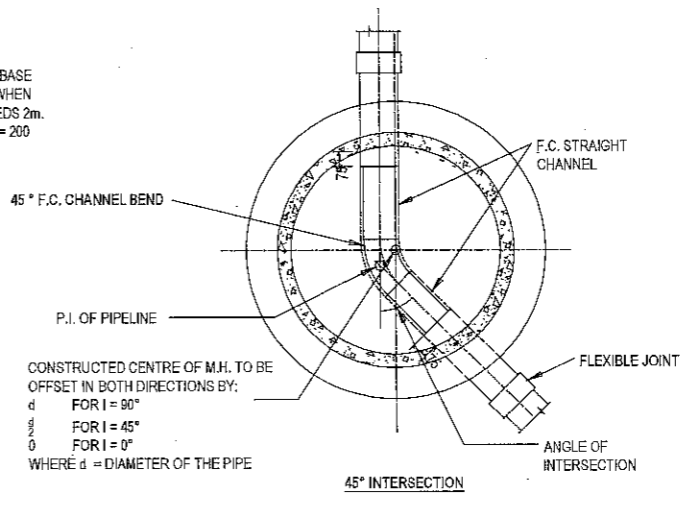
ARCUS GIBB (Pty) Ltd. shall not be liable for the consequences of using this document other than for the purposes for which it was commissioned. Any user and any other person using or relying on the document for such other purposes, without such consent or reliance, is liable to confirm his agreement to indemnify ARCUS GIBB (Pty) Ltd. for all loss or damage resulting therefrom.



GENERAL NOTES:



NOTE 1:
THIS SECTION OF BASE ONLY REQUIRED WHEN BACKDROP EXCEEDS 2m.
BASE THICKNESS = 200



No	Date	Details	Std	Appd

FOR TENDER PURPOSE

Client: **human settlements**
Department of Water and Sanitation
REPUBLIC OF SOUTH AFRICA

GIBB
ENGINEERING & SCIENCE

9 Fluorine Street, Bona, East London 6241
PO BOX 19844, Telecom 6214

Tel: +27 43 705 3600
Fax: +27 43 721 9141

Approved By: S. SCHROEDER
Drawn By: JP. MARRE
Designed By: JP. MARRE
Reviewed By: S. SCHROEDER

Project: **ENGCOBO EXTENSION 11 HOUSING DEVELOPMENT PHASE A - INTERNAL SERVICES**

Description: **SEWER MANHOLE DETAILS**

Scale: 1:25 Date: SEPT 2010
Project No: J28267 / TD101 / 0