

NOTES AND SPECIFICATIONS

GENERAL

1. ALL MATERIAL AND WORKMANSHIP MUST COMPLY WITH THE REQUIREMENTS OF THE LATEST RELEVANT SANS STANDARD
2. ALL DIMENSIONS ARE IN mm (UNLESS OTHERWISE SPECIFIED)
3. DO NOT SCALE FROM THESE DRAWINGS
4. ALL DIMENSIONS TO BE CHECKED AND APPROVED ON SITE
5. ALL CONSTRUCTION TO BE DONE IN ACCORDANCE WITH THE STANDARD SPECIFICATIONS FOR MUNICIPAL CIVIL ENGINEERING WORKS, THIRD EDITION 2005
6. THIS DRAWING MUST BE READ IN CONJUNCTION WITH THE STANDARD DRAWINGS (IF APPLICABLE)
7. THIS DRAWING MUST BE READ IN CONJUNCTION WITH THE STANDARD SPECIFICATIONS FOR MUNICIPAL CIVIL ENGINEERING WORKS, SERIES 4
8. FINAL POSITION OF SERVICES TO BE DETERMINED ON SITE
9. ALL STEEL WORK SHALL BE HOT DIP GALVANISED.

PARTICULAR

1. SHOP DRAWINGS FOR APPROVAL REQUIRED

NOTES AND SPECIFICATIONS

GENERAL ENGINEERING NOTES

1. ALL MATERIAL AND WORKMANSHIP MUST COMPLY WITH THE REQUIREMENTS OF THE LATEST RELEVANT SABS REQUIREMENTS.
2. ALL DIMENSIONS ARE IN MILLIMETRES. (UNLESS OTHERWISE SPECIFIED)
3. DO NOT SCALE FROM THESE DRAWINGS.
4. ALL DIMENSIONS MUST BE CHECKED AND APPROVED ON SITE.
5. THE CONSTRUCTION TO BE DONE IN ACCORDANCE WITH THE STANDARD SPECIFICATION FOR MUNICIPAL CIVIL ENGINEERING WORKS, THIRD EDITION 2005 AND THE STANDARD CTWW DETAIL DRAWINGS.
6. THESE DRAWINGS MUST BE READ IN CONJUNCTION WITH THE STANDARD DRAWINGS (IF APPLICABLE).
7. THESE DRAWINGS MUST BE READ IN CONJUNCTION WITH THE STANDARD SPECIFICATIONS FOR MUNICIPAL CIVIL ENGINEERING WORKS, SERIES 4.
8. THE SIGNATURE OR INITIALS ON THIS DRAWING, OF ANY MANAGER OF WATER AND SANITATION AND INFRASTRUCTURE DEVELOPMENT DEPARTMENT, IN NO WAY REMOVES ANY RESPONSIBILITY WHATSOEVER FROM THE CONSULTANT.
9. THE CONSULTANT REMAINS RESPONSIBLE TO ENSURE THAT ALL THE GUIDELINES, STANDARD DRAWINGS, STANDARDS AND SPECIFICATIONS OF WATER AND SANITATION AND INFRASTRUCTURE DEVELOPMENT DEPARTMENT HAVE BEEN MET AND COMPLIED WITH.
10. FINAL POSITION OF SERVICES TO BE DETERMINED ON SITE.

REVISION INFORMATION

No.	DATE	DESCRIPTION:	BY
F1	2023-09-18	ISSUED FOR TENDER	N.M

CLIENT



CONSULTANT



AMCE
7 Pierre Street
Bendor,
Polokwane,
Tel No. (015) 295 9914

PROJECT DESCRIPTION

PROFESSIONAL ENGINEERING SERVICES
FOR BURGERSFORT OUTFALL SEWER.

DISCIPLINE

STRUCTURAL ENGINEERING

DRAWING DESCRIPTION

BURGERSFORT EXT 54,
PUMP STATION: SECURITY FENCE CLEARVU
OR SIMILAR SWIVEL GATE

DRAWN BY: Neo Mahula
SIGNATURE AND DATE: 18 SEP 2023

CHECKED BY: Dale Russon
Structural Technologist
SIGNATURE AND DATE: 18 SEP 2023

Paul Phulwane
PR Tech Eng 201470142
SIGNATURE AND DATE: 18 SEP 2023

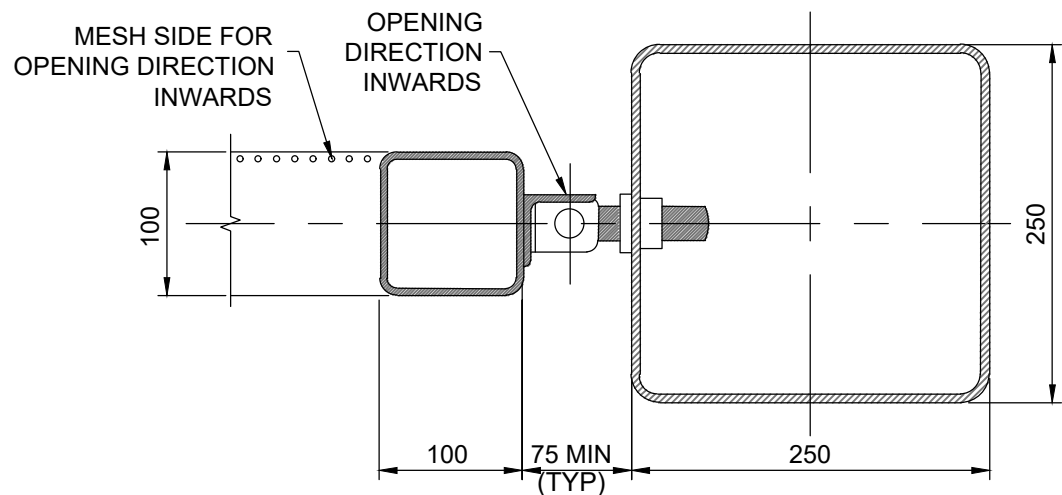
PROJECT NO.: 1121
DATE: 18 SEP 2023

DRAWING NO.:

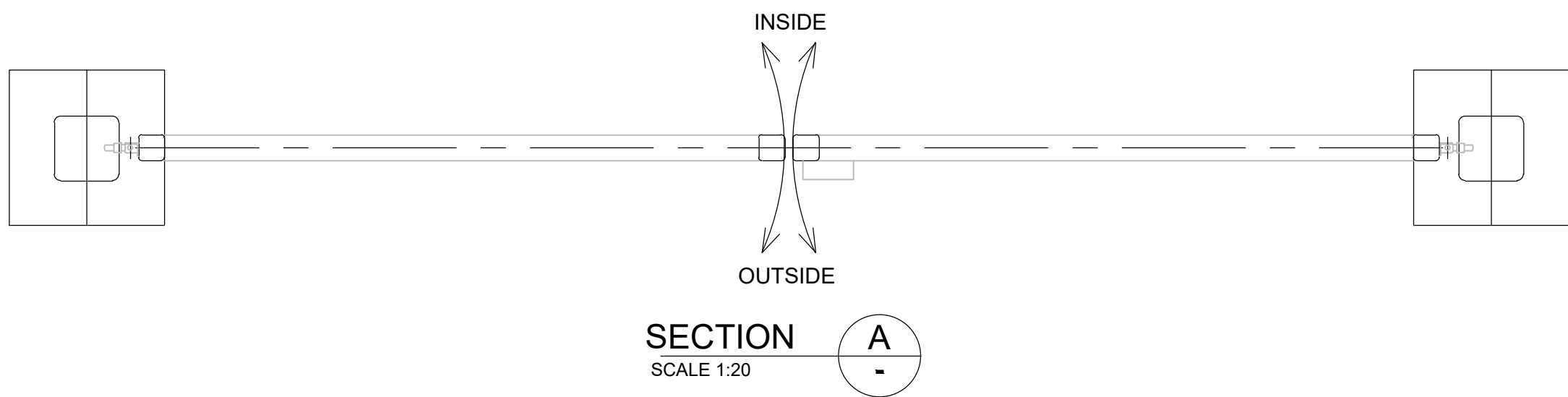
NT06-22-1121-601-PS-005

SCALE	SHEET SIZE	REVISION
AS SHOWN	A1	F1

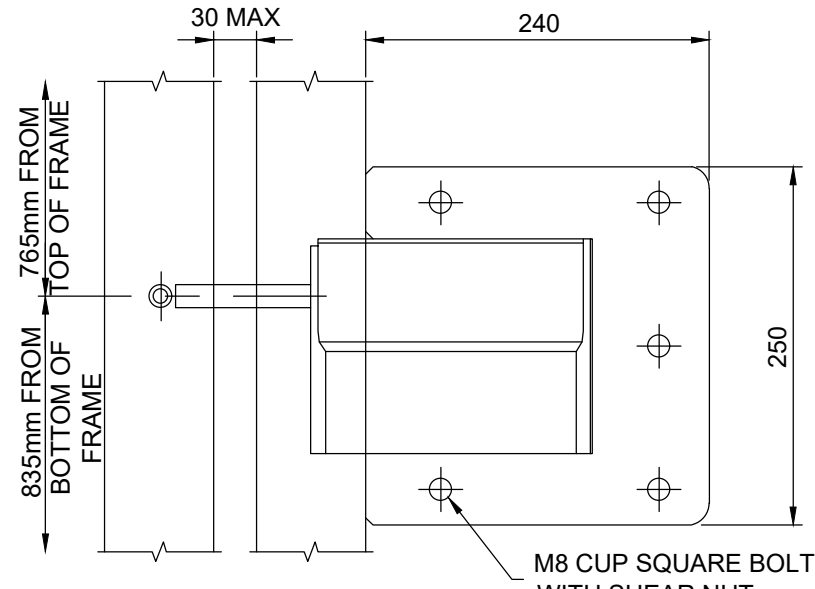
NO	ITEM	DESCRIPTION	QTY
1	HINGE POST	250x250x6 SHS	2
2	DROP BOLT	32mm Ø ROUND BAR	2
3	GATE FRAME	100x100x4 SHS	2
4	LOCKING DEVICE	30mm Ø T-SLIDE LOCK, WITH LOCK BOX	1
5	HINGE	ADJUSTABLE SCREW HINGE	4
6	BASE PLATE	600x600x5 FLAT	2
7	COVER PLATE	50x50x5 L, 120mm LONG	4
8	GRAB HANDLE	HANDLE	4
9	MESH	CLEARVU22 OR SIMILAR REINFORCED MESH	2
10	FOUNDATION	600x600x1000 CONCRETE, 20/19 @ 28 DAYS	2
11	COVER PLATE	250x250x5 FLAT	2



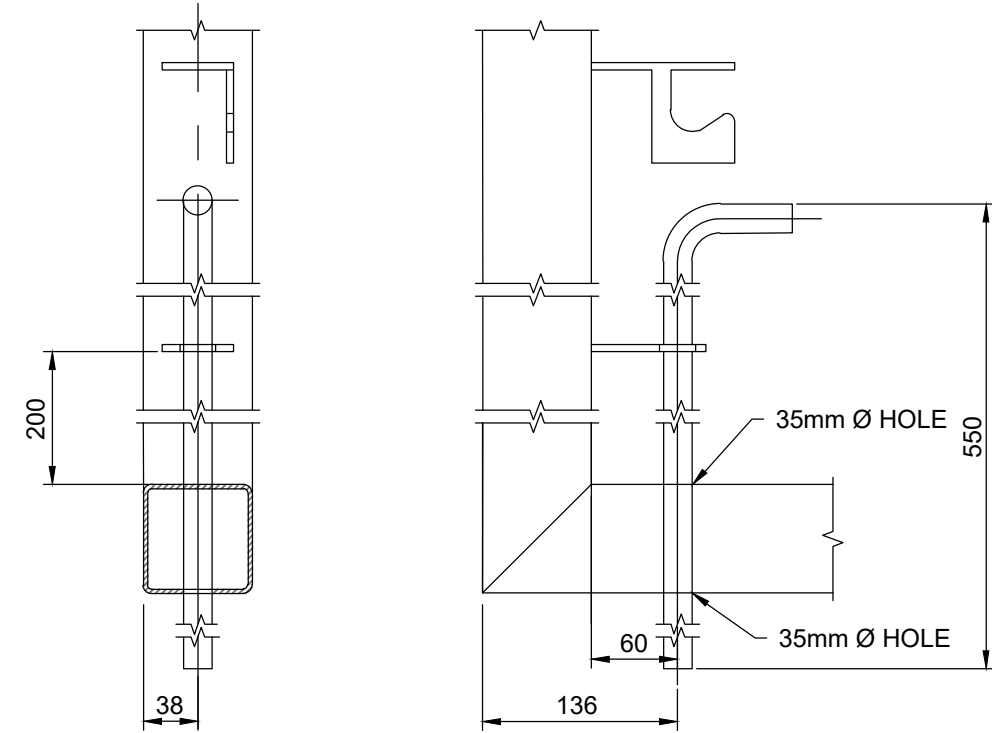
TYPICAL HINGE DETAIL
SCALE 1:5



SECTION A
SCALE 1:20



TYPICAL LOCK DETAIL
SCALE 1:5



TYPICAL DROP BOLT DETAIL
SCALE 1:5

- NOTE :
1. THIS DRAWING SHOWS A TYPICAL LAYOUT OF A MESH PANEL SECURITY GATE
 2. CLEARVU 22 OR SIMILAR MESH ACCEPTABLE