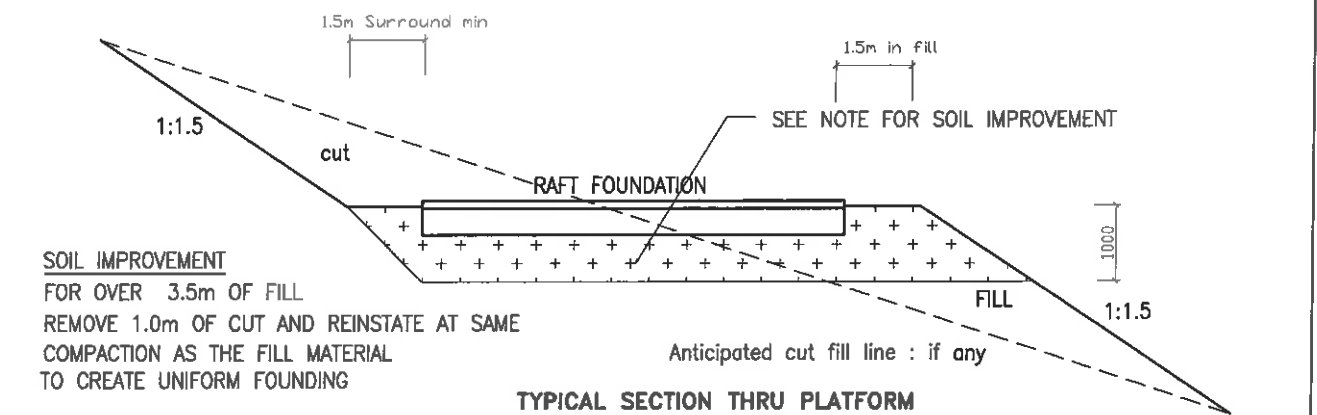
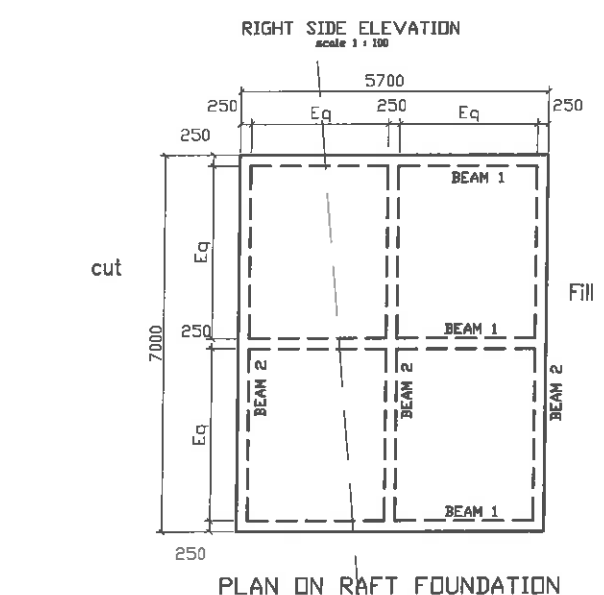
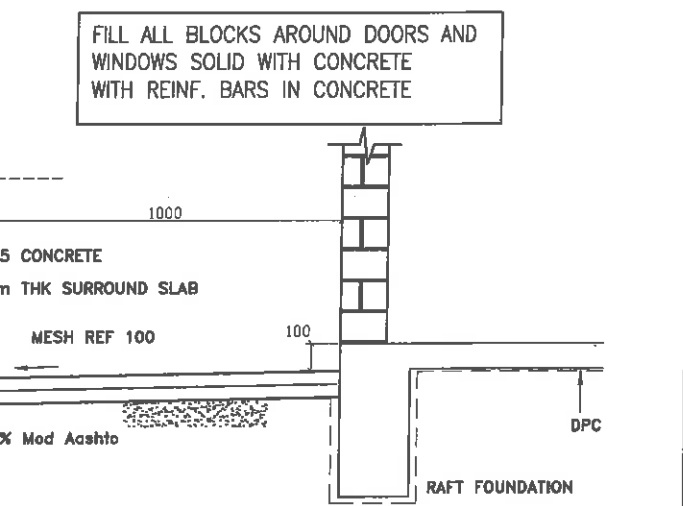
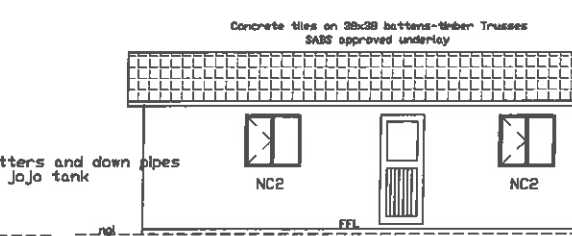
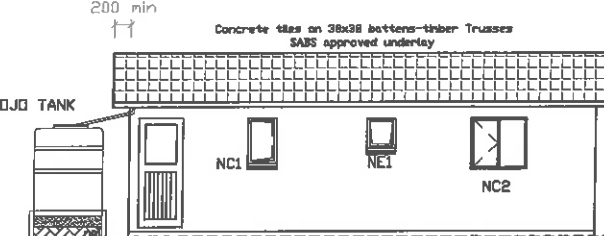
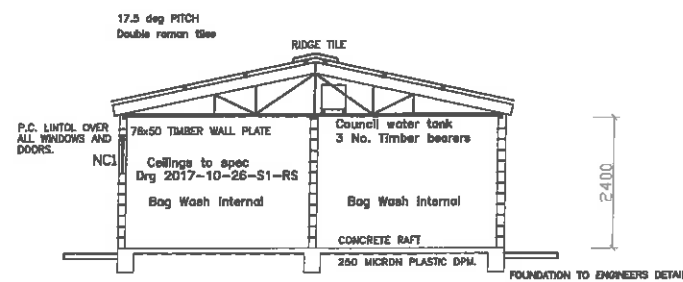
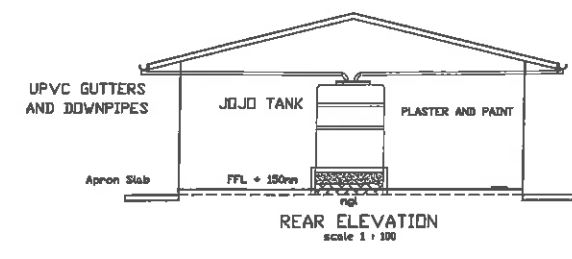
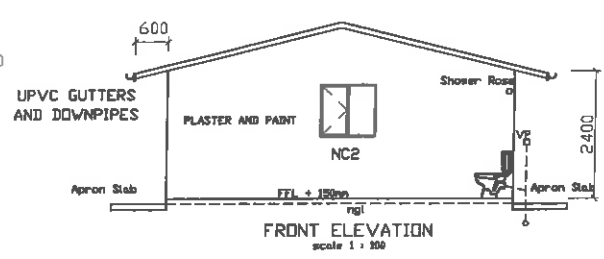
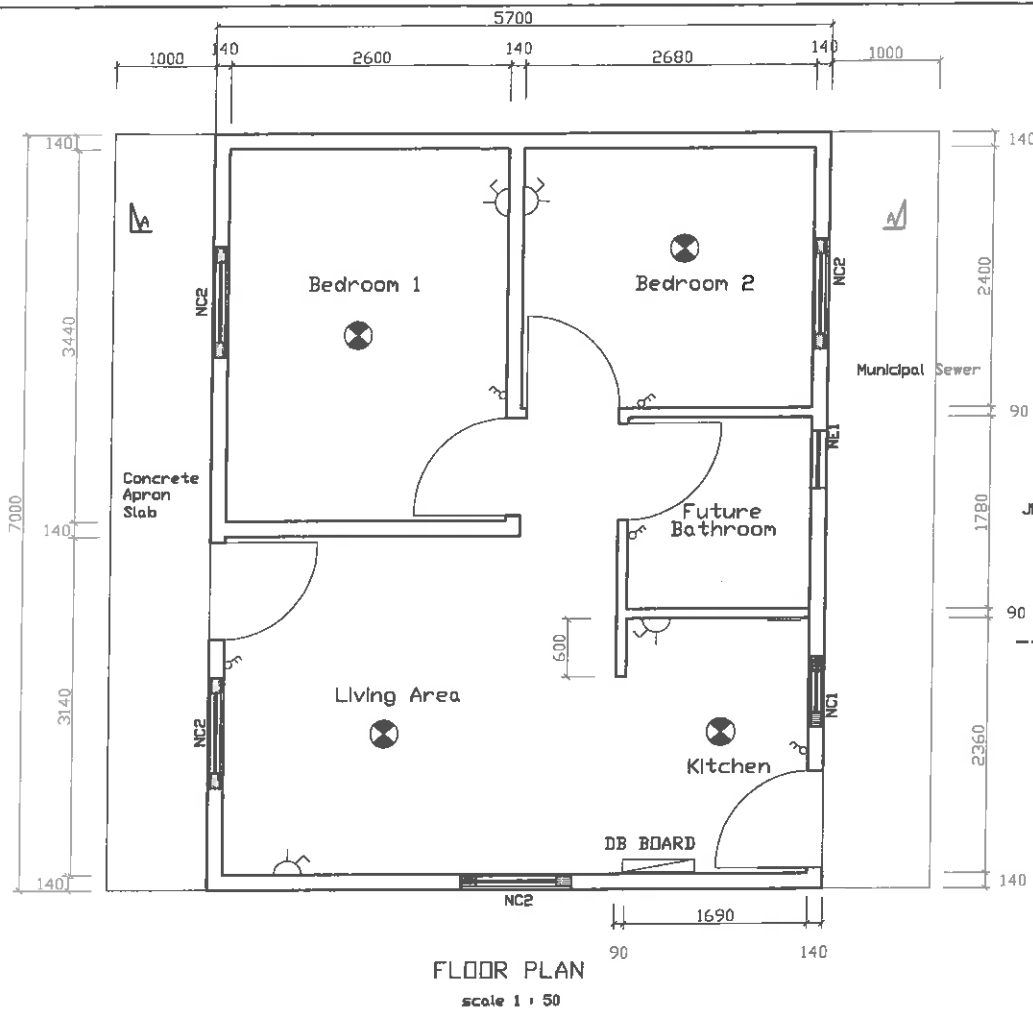
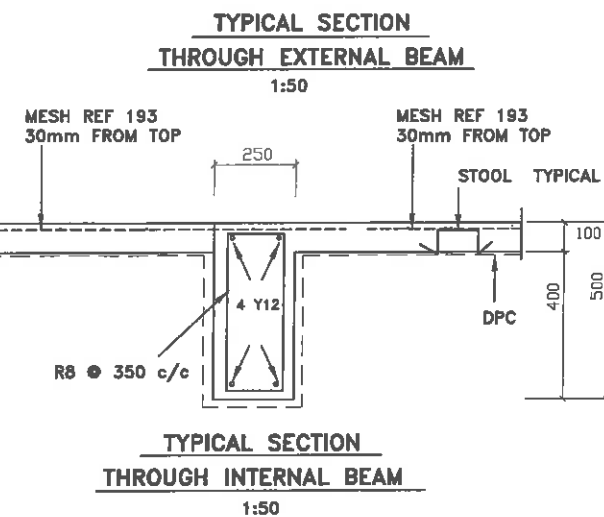
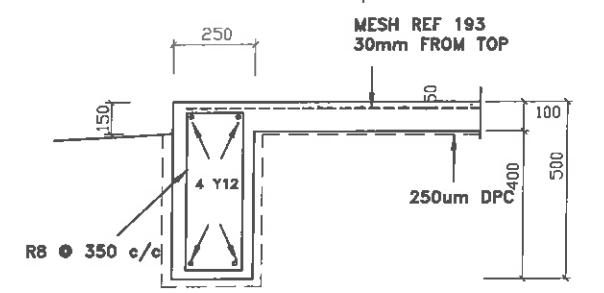
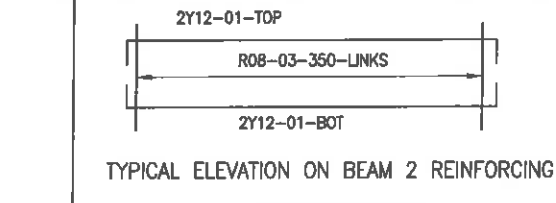
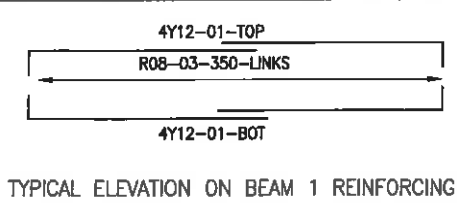


SEE DRG No. 2017-10-26 S1-Rev 0 FOR SPECIFICATIONS



MEMBER	No. Off	REINFORCEMENT				BENDING DIMENSIONS							
		Type & Dia	Mark	No in Each	Total No.	Length mm	Shape Code	A mm	B mm	C mm	D mm	E/R mm	
BEAM 1	3	Y12	01	08	24	3200	34	3050					
		R08	03	16	64	1250	60	420	150				
BEAM 2	3	Y12	01	4	12	7100	35	6900					
		R08	03	19	57	1250	60	420	150				
		R08	08	8	8	1140	83	500	70	250	STOOLS		



- NOTES.
- Platform to be stripped of all vegetation and topsoil prior to placing fill material.
 - Fill material to be compacted in 150 mm layers to 95% MOD AASHTO.
 - All cut and fill banks are not to exceed a maximum slope of 1:1.5 or 34 deg
 - No service trenches to be left open for more than 2 days.
 - All service trenches to be compacted 93% MOD AASHTO.
 - The building platform must be well graded as indicated to prevent any water from ponding around the raft.
 - Provide P.C. lintels over all doors and windows or use ring beams if concrete blocks are used.
 - Concrete works strength at 28 days to be 20 Mpa.
 - Cover to reinforcement: Beams 50mm ; Slab 70mm from the platform level.
 - All concrete must be well vibrated during placing using mechanical vibration.

- All reinforcement must be inspected by the engineer prior to pouring of concrete.
- If concrete blocks are used brickwork to be placed every second course external walls and every course above window and door level
- Max block and concrete blocks external/ internal wall butt joint to SABS recommendations.
- Provide benches to fills of platforms when n.g.l. slope exceeds 1:6.
- Reinforcement in external beams to be moved to maintain minimum cover requirements and accommodate the required recess at the threshold of each external door and the 50mm weather step at stoop where applicable.
- 600 x 600 10MPa mass concrete pads to be placed at the intersection of the raft beams as instructed by the Engineer.
- AND ANY DISCREPANCIES TO BE REPORTED BEFORE ANY WORK IS PUT IN HAND .
- NO CONCRETE TO BE POURED WITHOUT THE ENGINEERS CONSENT .
- NO STRUCTURAL ALTERATIONS ARE TO BE MADE WITHOUT AMENDED DRAWINGS .
- SLEEVES AND DUCTS TO BE PROVIDED FOR ALL PIPES AND SERVICES .

STORM DAMAGE -40m2 UNIT
UNIT AND RAFT FOUNDATION
7.0m x 5.7m unit
RURAL SPECIFICATION

FOUNDATION DESIGNED FOR CATEGORY 1
EXPECTED DAMAGED AS SET OUT IN N.H.B.R.C.
STANDARDS AND GUIDELINES.